



June 16, 2008,

Ms. Sheila Gaston
Colorado Department of Public Health and Environment
Hazardous Materials and Waste Management Division
4300 Cherry Creek Drive South
Denver, Colorado 80246-1530

RE: Groundwater, Surface Water, and Soil Vapor Monitoring Report
Post-Closure Monitoring – Second Quarter 2008
Operable Unit 2 (OU-2) Landfill Site
Former Lowry Air Force Base
Denver, Colorado

Dear Ms. Gaston:

LT Environmental, Inc. (LTE) has been retained by Lowry Assumption, LLC (LAC) to conduct quarterly groundwater, surface water, and soil vapor sampling events at the above-referenced site (Figure 1). In accordance with the requirements set forth in the Colorado Department of Public Health and Environment (CDPHE) approved *Phase 2 Corrective Action Plan for the Operable Unit 2 Landfill Closure at Lowry (MACTEC, 2004) (Phase 2 CAP)*, LTE conducted the OU-2 post-closure monitoring activities for the Second Quarter 2008 in April and May 2008. This event is the seventh of eight scheduled quarterly baseline groundwater monitoring events.

Ten monitoring wells (LZ-13, LFPOC07 through LFPOC13, BG-5 and BG-6) and three surface water samples (SW-1, SW-2, and SW-3) were sampled on April 28 and April 29, 2008. A total of 27 soil vapor points (GP-01 through GP-27) were field screened for the presence of methane on April 29, 2008. The analytical results from the Second Quarter 2008 groundwater monitoring activities, surface water monitoring, as well as results of the soil vapor monitoring activities are discussed below.

Groundwater Sampling

Depth to groundwater was measured in each monitoring well prior to purging. All monitoring wells sampled were purged with a peristaltic pump using low-flow purge methods. Measurements of temperature, pH, and electrical conductivity (EC) were collected and each monitoring well was sampled after the three parameters had stabilized (i.e., reading within +/- 10 percent of the previous reading). Field parameters were measured using an YSI 556[®] Multi-Probe Field Meter (YSI 556[®] Meter). Volatile organic compounds (VOCs) were screened in the headspace of each monitoring well, utilizing a Mini Rae 2000[®] photoionization detector (PID) prior to purging. Groundwater was inspected for odor and the presence of phase-separated hydrocarbons (PSH). Field observations were recorded on monitoring well development/purging forms, as well as in the field logbook. Electronic copies of the monitoring well development/purge forms are included as Attachment 1 on the attached CD.



Groundwater samples were collected in laboratory prepared hydrochloric acid (HCl) preserved 40-milliliter (ml) vials, nitric acid preserved 500-ml poly bottles, and sulfuric acid preserved 250-ml amber bottles. Samples were placed on ice and delivered with a completed chain-of-custody (COC) form to Paragon Analytics Laboratories (Paragon) located in Fort Collins, Colorado. In accordance with the Phase 2 CAP, groundwater samples were submitted for analysis of the following:

- Alkalinity, Carbonates, Bicarbonates by United States Environmental Protection Agency (EPA) Method 310.1;
- Gross Alpha and Gross Beta by EPA Method 9310;
- Ion Chromatography for Chloride, Nitrite, Nitrate and Sulfate by EPA Method 9056;
- Total Organic Carbon (TOC) by Method 9060;
- Total Inductively-coupled Plasma (ICP) Metals by Method 601; and
- VOCs by EPA Method 8260B.

Two groundwater monitoring well samples (BG-5 and LFPOC10) exceeded the shipping temperature of 4°C when received by the laboratory on April 29, 2008. LTE resampled both monitoring wells on May 1, 2008 and submitted these samples to the laboratory on the same day.

Surface Water Sampling

Surface water samples were collected from three designated locations along Westerly Creek on April 28 and April 29, 2008. The approximate surface water sample locations are shown on Figure 1. Prior to the collection of surface water samples, water quality parameters including temperature, pH, EC were measured using a YSI 556® Meter and recorded on the field forms. Every effort was made not to disturb creek sediment during the collection of water samples. In addition, surface water was collected in order of downstream to upstream to avoid cross-contamination from any disturbed sediment load.

Surface water samples were collected in laboratory prepared HCl preserved 40-ml vials, nitric acid preserved 500-ml poly bottles, and sulfuric acid preserved 250-ml amber bottles. Samples were placed on ice and delivered with a completed COC form to Paragon. In accordance with the Phase 2 CAP, surface water samples were submitted for analysis of the following:

- Alkalinity, Carbonates, Bicarbonates by EPA Method 310.1;
- Gross Alpha and Gross Beta by EPA Method 9310;
- Ion Chromatography for Chloride, Nitrite, Nitrate and Sulfate by EPA Method 9056;
- TOC by Method 9060;
- Total ICP Metals by Method 6010; and
- VOCs by EPA Method 8260B.



Soil Vapor Point Monitoring

The Second Quarter 2008 post-closure soil vapor monitoring event was completed on April 29, 2008. A total of 27 soil vapor points (GP-01 through GP-27) were purged of three liters of air with an electronic pump prior to collection of the soil vapor sample. Each soil vapor point was field screened with a Q-RAE Plus 4-Gas Monitor (Q-RAE) to assess for the presence of methane (CH₄) and with a Mini RAE 2000[®] PID to screen for the presence of VOCs. Previous soil vapor sampling was conducted using a MSA Gasport Tester instead of the Q-RAE. The change in meters should not have an effect on the soil vapor readings, but the results will be monitored in future events. Copies of the gas monitoring forms are included as Attachment 2 on the attached CD.

The Q-RAE was used to measure methane in each soil vapor point. The Q-RAE reads up to 100 percent lower explosive limit (five percent by volume of methane) then converts to read percent by volume methane up to 100 percent methane. In the event that the Q-RAE measured methane in a soil vapor point that equaled or exceeded one percent by volume of methane, a one liter Tedlar[®] bag containing the sample would be placed in a cooler, and delivered with a completed COC for analysis of methane by EPA Method GC FID.

Quality Assurance and Quality Control (QA/QC)

Field QC groundwater samples consisted of trip blanks and duplicate samples. One trip blank accompanied every shipment of samples to be analyzed for VOCs. A blind duplicate sample, collected from monitoring well LFPOC08 and surface water sample SW-2, was submitted for this sampling event and was analyzed for the same parameters as the routine environmental samples.

The laboratory general practices and analytical QC samples included a method blank and a matrix spike/matrix spike duplicate (MS/MSD) for each sample batch.

Groundwater Analytical Results

Table 1 summarizes VOC analytical results for the groundwater samples collected during the seven quarterly post-closure sampling events completed to date. Total Metals analytical results for groundwater are summarized in Table 2. Table 3 summarizes water quality parameters in groundwater. Gross Alpha and Gross Beta analytical results are summarized in Table 4. Groundwater analytical laboratory reports, laboratory QA/QC data, and COC documentation are included on the attached CD as Attachment 3.

VOC concentrations in the groundwater samples were compared to the CDPHE groundwater standards and Federal Maximum Contaminant Levels (MCL) drinking water quality standards. The results indicate that all groundwater samples were non-detect or below the standards for VOCs. Additionally, VOCs were not detected while field screening the headspace of each monitoring well with a PID. Total Metals results indicate that no groundwater samples exceeded Federal drinking water MCLs.



During the April 2008 event, analytical results indicated that Gross Alpha in groundwater concentrations were detected above CDPHE groundwater standards in two upgradient monitoring wells (BG-5 and LFPOC09) and six downgradient monitoring wells (LFPOC07, LFPOC08, LFPOC10, LFPOC11, LFPOC13, and LZ-13).

Surface Water Analytical Results

Table 1 includes VOC analytical results for the surface water samples collected during the seven post-closure quarterly sampling events completed to date. Total Metals analytical results for surface water samples for these monitoring events are included in Table 2. Table 3 summarizes water quality parameters for surface water samples collected. Gross Alpha and Gross Beta analytical results for surface water samples collected during this monitoring event are included Table 4. Surface water analytical laboratory reports, laboratory QA/QC data, and COC documentation are included on the attached CD as Attachment 3.

VOC concentrations for the surface water samples were compared to the CDPHE groundwater standards and Federal MCL drinking water quality standards. The results indicate that all surface water samples were non-detect or below the standards for VOCs. Total Metals results indicate that there are no surface water samples that exceeded Federal drinking water MCLs. Surface water samples collected in April 2008 did not exceed CDPHE Secondary Drinking Water Standards for Chloride and Sulfate.

Analytical results indicated that Gross Alpha results were below the CDPHE standards for the surface water sampled during this quarterly monitoring event.

Soil Vapor Point Results

Based on the field screening during the April 2008 monitoring event, a total of 22 soil vapor points had low LEL readings though none exceeded the soil gas action level of one percent by volume of methane. Because of the use of a new Q-RAE meter for this sampling event and the number of LEL detections, LTE submitted two soil vapor samples (GP-16, and GP-17) to Evergreen Analytical, Inc. for analysis. Based on these analytical results and the field screening, none of the soil vapor point samples contained methane concentrations above the soil gas action level of one percent by volume of methane. LTE will continue monitoring the soil vapor points to determine if a trend is present. Additionally, field screening the headspace of the soil vapor points with the PID concluded that no measurable VOCs were present. Field screening measurements for the soil vapor sample collected during this monitoring event are presented in Table 5. Soil Vapor analytical laboratory reports, laboratory QA/QC data, and COC documentation are included on the attached CD as Attachment 4.

Site Update

The seventh of eight scheduled quarterly groundwater monitoring events occurred on April 28 and 29, 2008; two wells were resampled on May 1, 2008. A semiannual surface water sampling event occurred on April 28 and 29, 2008. The second of four scheduled quarterly soil vapor monitoring events in 2008 was conducted on April 29, 2008. The next groundwater and soil



vapor monitoring event is scheduled for July 2008. The next semiannual surface water sampling event is scheduled to be completed in October 2008. Please contact our office at 303-433-9788 if you have any questions about the data provided or need further information regarding the site.

Sincerely,

LT ENVIRONMENTAL, INC.

Chris Purcell
Staff Geologist

Tom Murphy, P.G.
Project Manager

cc: David Erickson – CCD DEH
Monty Force – LRA
Karen Hancock – Aurora
Stanley Pehl – AFCEE (2)
Pat Smith – EPA Region 8
Paul Weaverling - IRGA
John Yerton - IRGA (2)

Table of Contents (Enclosures):

Figure 1 – Site Map

Table 1 – VOCs Laboratory Analytical Results

Table 2 – Total Metals Laboratory Analytical Results

Table 3 – Anions, Field Parameters, and TOC Results

Table 4 – Gross Alpha and Gross Beta Laboratory Analytical Results

Table 5 – Soil Vapor Results

Table 6 – Statistical Evaluation of Analytical Results

Provided on CD

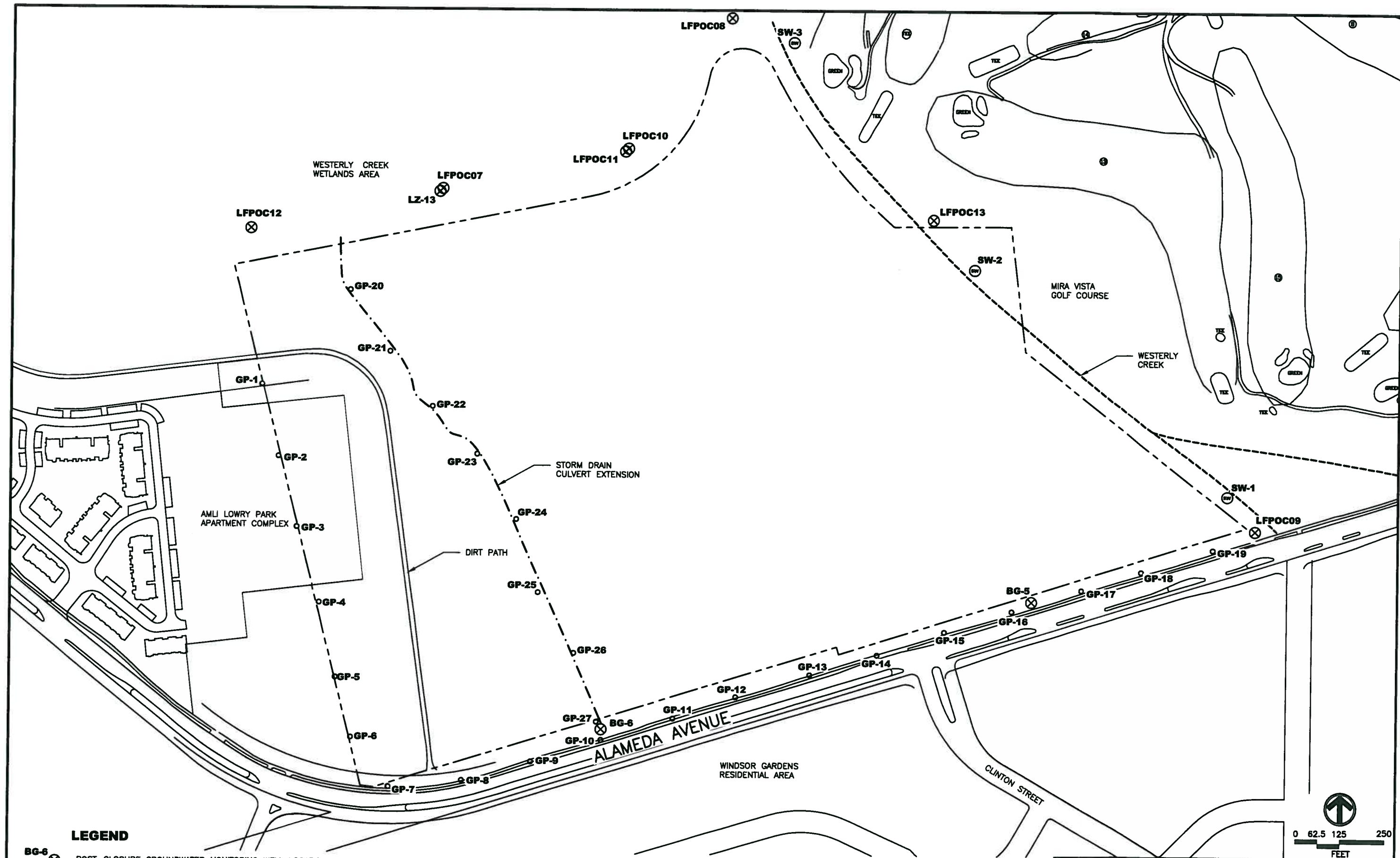
Attachment 1 – Groundwater and Surface Water Sampling Field Data Sheets

Attachment 2 – Soil Vapor Monitoring Forms

Attachment 3 – Groundwater and Surface Water Analytical Results

Attachment 4 – Soil Vapor Analytical Results

FIGURE AND TABLES



LEGEND

- BG-6 ⊗ POST-CLOSURE GROUNDWATER MONITORING WELL LOCATION
- SW-1 ⊖ SURFACE WATER SAMPLING LOCATION
- GP-1 ⊕ GAS MONITORING PROBE LOCATION
- - - LANDFILL PROPERTY BOUNDARY

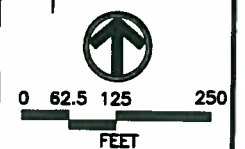


FIGURE 1
SITE MAP
LOWRY OU2 LANDFILL SITE
DENVER, COLORADO
 LOWRY ASSUMPTION LLC.



**TABLE 1
LABORATORY ANALYTICAL RESULTS - VOLATILE ORGANIC COMPOUNDS
LOWRY OU2 LANDFILL SITE
FORMER LOWRY AIR FORCE BASE
DENVER, COLORADO**

Sampling Location / Well ID	Sample Date	Analytical Method	Volatile Organic Compounds (ug/L)													
			Acetone	Benzene	Bromochloro methane	Bromodichloro methane	Bromoform	Carbon Disulfide	Carbon tetrachloride	Chlorobenzene	Chloroethane	Chloroform	Dibromochloro methane	1,2-Dibromo-3-chloropropane	1,2-Dibromo ethane	1,2-Dichloro benzene
Upgradient																
BG-5	11/13/06	SW8260_25	<10	<1	<1	<1	<1	<1	<1	<1	<1	<1	<1	<2	<1	<1
BG-5	2/7/07	SW8260_25	<10 (R)	<1	<1	<1	<1	<1	<1	<1	<1	<1	<1	<2	<1	<1
BG-5	4/19/07	SW8260_25	<10 (R)	<1	<1	<1	<1	<1	<1	<1	<1	<1	<1	<2	<1	<1
BG-5	7/23/07	SW8260_25	<10	<1	<1	<1	<1	<1	<1	<1	<1	<1	<1	<2	<1	<1
BG-5	10/30/07	SW8260_25	<10	<1	<1	<1	<1	<1	<1	<1	<1	<1	<1	<2	<1	<1
BG-5 (Dup)	10/30/07	SW8260_25	<10	<1	<1	<1	<1	<1	<1	<1	<1	<1	<1	<2	<1	<1
BG-5	1/31/08	SW8260_25	<10	<1	<1	<1	<1	<1	<1	<1	<1	<1	<1	<2	<1	<1
BG-5	5/1/08	SW8260_25	<10	<1	<1	<1	<1	<1	<1	<1	<1	<1	<1	<2	<1	<1
BG-6	11/13/06	SW8260_25	<10	<1	<1	<1	<1	<1	<1	<1	<1	<1	<1	<2	<1	<1
BG-6	2/7/07	SW8260_25	<10 (R)	<1	<1	<1	<1	<1	<1	<1	<1	<1	<1	<2	<1	<1
BG-6 (Dup)	2/7/07	SW8260_25	<10 (R)	<1	<1	<1	<1	<1	<1	<1	<1	<1	<1	<2	<1	<1
BG-6	4/20/07	SW8260_25	<10 (R)	<1	<1	<1	<1	<1	<1	<1	<1	<1	<1	<2	<1	<1
BG-6	7/23/07	SW8260_25	<10	<1	<1	<1	<1	<1	<1	<1	<1	<1	<1	<2	<1	<1
BG-6	10/30/07	SW8260_25	<10	<1	<1	<1	<1	<1	<1	<1	<1	<1	<1	<2	<1	<1
BG-6	1/30/08	SW8260_25	<10	<1	<1	<1	<1	<1	<1	<1	<1	<1	<1	<2	<1	<1
BG-6	4/28/08	SW8260_25	<10	<1	<1	<1	<1	<1	<1	<1	<1	<1	<1	<2	<1	<1
LFPOC09	11/13/06	SW8260_25	<10	<1	<1	<1	<1	<1	<1	<1	<1	<1	<1	<2	<1	<1
LFPOC09	2/8/07	SW8260_25	<10 (R)	<1	<1	<1	<1	<1	<1	<1	<1	<1	<1	<2	<1	<1
LFPOC09	4/19/07	SW8260_25	<10 (R)	<1	<1	<1	<1	<1	<1	<1	<1	<1	<1	<2	<1	<1
LFPOC09	7/23/07	SW8260_25	<10	<1	<1	<1	<1	<1	<1	<1	<1	<1	<1	<2	<1	<1
LFPOC09	10/31/07	SW8260_25	<10	<1	<1	<1	<1	<1	<1	<1	<1	<1	<1	<2	<1	<1
LFPOC09	1/30/08	SW8260_25	<10	<1	<1	<1	<1	<1	<1	<1	<1	<1	<1	<2	<1	<1
LFPOC09	4/28/08	SW8260_25	<10	<1	<1	<1	<1	<1	<1	<1	<1	<1	<1	<2	<1	<1
Downgradient																
LFPOC07	11/13/06	SW8260_25	<10	<1	<1	<1	<1	<1	<1	<1	<1	<1	<1	<2	<1	<1
LFPOC07	2/8/07	SW8260_25	<10 (R)	<1	<1	<1	<1	<1	<1	<1	<1	<1	<1	<2	<1	<1
LFPOC07	4/19/07	SW8260_25	<10 (R)	<1	<1	<1	<1	<1	<1	<1	<1	<1	<1	<2	<1	<1
LFPOC07	7/23/07	SW8260_25	<10	<1	<1	<1	<1	<1	<1	<1	<1	<1	<1	<2	<1	<1
LFPOC07	12/19/07	SW8260_25	<10	<1	<1	<1	<1	<1	0.21 (J,B)	<1	<1	<1	<1	<2	<1	<1
LFPOC07	1/30/08	SW8260_25	<10	<1	<1	<1	<1	<1	<1	<1	<1	<1	<1	<2	<1	<1
LFPOC07	4/28/08	SW8260_25	<10	<1	<1	<1	<1	<1	<1	<1	<1	<1	<1	<2	<1	<1
LFPOC08	11/13/06	SW8260_25	<10	<1	<1	<1	<1	<1	<1	<1	<1	<1	<1	<2	<1	<1
LFPOC08	2/7/07	SW8260_25	<10 (R)	<1	<1	<1	<1	<1	<1	<1	<1	<1	<1	<2	<1	<1
LFPOC08	4/19/07	SW8260_25	<10 (R)	<1	<1	<1	<1	<1	<1	<1	<1	<1	<1	<2	<1	<1
LFPOC08	7/23/07	SW8260_25	<10	<1	<1	<1	<1	<1	<1	<1	<1	<1	<1	<2	<1	<1

Notes: CDPHE - Colorado Department of Public Health and Environment
ug/L - micrograms per Liter (Dup) - Duplicate sample

MCLs - Maximum Contaminant Levels
< - below the Reporting Limit

(B) - Detected in Method Blank

(J) - Result is an estimated value.

(R) - Result is a rejected value.

**TABLE 1
LABORATORY ANALYTICAL RESULTS - VOLATILE ORGANIC COMPOUNDS
LOWRY OU2 LANDFILL SITE
FORMER LOWRY AIR FORCE BASE
DENVER, COLORADO**

Sampling Location / Well ID	Sample Date	Analytical Method	Volatile Organic Compounds (ug/L)															
			Acetone	Benzene	Bromochloro methane	Bromodichloro methane	Bromoform	Carbon Disulfide	Carbon tetrachloride	Chlorobenzene	Chloroethane	Chloroform	Dibromochloro methane	1,2-Dibromo-3-chloropropane	1,2-Dibromo ethane	1,2-Dichloro benzene		
LFPOC08	10/30/07	SW8260_25	<10	<1	<1	<1	<1	<1	<1	<1	<1	<1	<1	<1	<1	<1	<1	<1
LFPOC08	1/30/08	SW8260_25	<10	<1	<1	<1	<1	<1	<1	<1	<1	<1	<1	<1	<1	<1	<1	<1
LFPOC08	4/28/08	SW8260_25	<10	<1	<1	<1	<1	<1	<1	<1	<1	<1	<1	<1	<1	<1	<1	<1
LFPOC08 (Dup)	4/28/08	SW8260_25	<10	<1	<1	<1	<1	<1	<1	<1	<1	<1	<1	<1	<1	<1	<1	<1
LFPOC10	11/13/06	SW8260_25	<10	<1	<1	<1	<1	<1	<1	<1	<1	<1	<1	<1	<1	<1	<1	<1
LFPOC10	2/7/07	SW8260_25	<10 (R)	<1	<1	<1	<1	<1	<1	<1	<1	<1	<1	<1	<1	<1	<1	<1
LFPOC10	4/19/07	SW8260_25	<10 (R)	<1	<1	<1	<1	<1	<1	<1	<1	<1	<1	<1	<1	<1	<1	<1
LFPOC10	7/23/07	SW8260_25	<10	<1	<1	<1	<1	<1	<1	<1	<1	<1	<1	<1	<1	<1	<1	<1
LFPOC10	10/30/07	SW8260_25	<10	<1	<1	<1	<1	<1	<1	<1	<1	<1	<1	<1	<1	<1	<1	<1
LFPOC10	1/30/08	SW8260_25	<10	<1	<1	<1	<1	<1	<1	<1	<1	<1	<1	<1	<1	<1	<1	<1
LFPOC10 (Dup)	1/30/08	SW8260_25	<10	<1	<1	<1	<1	<1	<1	<1	<1	<1	<1	<1	<1	<1	<1	<1
LFPOC10	5/1/08	SW8260_25	<10	<1	<1	<1	<1	<1	<1	<1	<1	<1	<1	<1	<1	<1	<1	<1
LFPOC11	11/13/06	SW8260_25	<10	<1	<1	<1	<1	<1	<1	<1	<1	<1	<1	<1	<1	<1	<1	<1
LFPOC11	2/7/07	SW8260_25	<10 (R)	<1	<1	<1	<1	<1	<1	<1	<1	<1	<1	<1	<1	<1	<1	<1
LFPOC11	4/19/07	SW8260_25	<10 (R)	<1	<1	<1	<1	<1	<1	<1	<1	<1	<1	<1	<1	<1	<1	<1
LFPOC11	7/23/07	SW8260_25	<10	<1	<1	<1	<1	<1	<1	<1	<1	<1	<1	<1	<1	<1	<1	<1
LFPOC11	10/30/07	SW8260_25	<10	<1	<1	<1	<1	<1	<1	<1	<1	<1	<1	<1	<1	<1	<1	<1
LFPOC11	1/30/08	SW8260_25	<10	<1	<1	<1	<1	<1	<1	<1	<1	<1	<1	<1	<1	<1	<1	<1
LFPOC11	4/28/08	SW8260_25	<10	<1	<1	<1	<1	<1	<1	<1	<1	<1	<1	<1	<1	<1	<1	<1
LFPOC12	11/13/06	SW8260_25	<10	<1	<1	<1	<1	<1	<1	<1	<1	<1	<1	<1	<1	<1	<1	<1
LFPOC12	2/8/07	SW8260_25	<10 (R)	<1	<1	<1	<1	<1	<1	<1	<1	<1	<1	<1	<1	<1	<1	<1
LFPOC12	4/19/07	SW8260_25	<10 (R)	<1	<1	<1	<1	<1	<1	<1	<1	<1	<1	<1	<1	<1	<1	<1
LFPOC12 (Dup)	4/19/07	SW8260_25	<10 (R)	<1	<1	<1	<1	<1	<1	<1	<1	<1	<1	<1	<1	<1	<1	<1
LFPOC12	7/23/07	SW8260_25	<10	<1	<1	<1	<1	<1	<1	<1	<1	<1	<1	<1	<1	<1	<1	<1
LFPOC12 (Dup)	7/23/07	SW8260_25	<10	<1	<1	<1	<1	<1	<1	<1	<1	<1	<1	<1	<1	<1	<1	<1
LFPOC12	10/30/07	SW8260_25	<10	<1	<1	<1	<1	<1	<1	<1	<1	<1	<1	<1	<1	<1	<1	<1
LFPOC12	1/30/08	SW8260_25	<10	<1	<1	<1	<1	<1	<1	<1	<1	<1	<1	<1	<1	<1	<1	<1
LFPOC12	4/28/08	SW8260_25	<10	<1	<1	<1	<1	<1	<1	<1	<1	<1	<1	<1	<1	<1	<1	<1
LFPOC13	11/13/06	SW8260_25	<10	<1	<1	<1	<1	<1	<1	<1	<1	<1	<1	<1	<1	<1	<1	<1
LFPOC13	2/7/07	SW8260_25	<10 (R)	<1	<1	<1	<1	<1	<1	<1	<1	<1	<1	<1	<1	<1	<1	<1
LFPOC13	4/20/07	SW8260_25	<10 (R)	<1	<1	<1	<1	<1	<1	<1	<1	<1	<1	<1	<1	<1	<1	<1
LFPOC13	7/24/07	SW8260_25	<10	<1	<1	<1	<1	<1	0.29 (J)	<1	<1	<1	<1	<1	<1	<1	<1	<1
LFPOC13	10/31/07	SW8260_25	<10	<1	<1	<1	<1	<1	<1	<1	<1	<1	<1	<1	<1	<1	<1	<1
LFPOC13	1/31/08	SW8260_25	<10	<1	<1	<1	<1	<1	<1	<1	<1	<1	<1	<1	<1	<1	<1	<1
LFPOC13	4/28/08	SW8260_25	<10	<1	<1	<1	<1	<1	<1	<1	<1	<1	<1	<1	<1	<1	<1	<1
LZ-13	11/13/06	SW8260_25	<10	<1	<1	<1	<1	<1	<1	<1	<1	<1	<1	<1	<1	<1	<1	<1
LZ-13	2/8/07	SW8260_25	<10 (R)	<1	<1	<1	<1	<1	<1	<1	<1	<1	<1	<1	<1	<1	<1	<1

Notes: CDPHE - Colorado Department of Public Health and Environment
ug/L - micrograms per Liter (Dup) - Duplicate sample

MCLs - Maximum Contaminant Levels
< - below the Reporting Limit

(B) - Detected in Method Blank

(J) - Result is an estimated value.

(R) - Result is a rejected value.



**TABLE 1
LABORATORY ANALYTICAL RESULTS - VOLATILE ORGANIC COMPOUNDS
LOWRY OU2 LANDFILL SITE
FORMER LOWRY AIR FORCE BASE
DENVER, COLORADO**

Sampling Location / Well ID	Sample Date	Analytical Method	Volatile Organic Compounds (ug/L)														
			Acetone	Benzene	Bromochloro methane	Bromodichloro methane	Bromoform	Carbon Disulfide	Carbon tetrachloride	Chlorobenzene	Chloroethane	Chloroform	Dibromochloro methane	1,2-Dibromo-3-chloropropane	1,2-Dibromo ethane	1,2-Dichloro benzene	
LZ-13	4/19/07	SW8260_25	<10 (R)	<1	<1	<1	<1	<1	<1	<1	<1	<1	<1	<1	<1	<1	<1
LZ-13	7/23/07	SW8260_25	<10	<1	<1	<1	<1	<1	<1	<1	<1	<1	<1	<1	<1	<1	<1
LZ-13	10/30/07	SW8260_25	<10	<1	<1	<1	<1	<1	<1	<1	<1	<1	<1	<1	<1	<1	<1
LZ-13	1/30/08	SW8260_25	<10	<1	<1	<1	<1	<1	<1	<1	<1	<1	<1	<1	<1	<1	<1
LZ-13	4/28/08	SW8260_25	<10	<1	<1	<1	<1	<1	<1	<1	<1	<1	<1	<1	<1	<1	<1
Surface Water																	
SW-1	11/21/06	SW8260_25	<10	<1	<1	<1	<1	<1	<1	<1	<1	<1	<1	<1	<1	<1	<1
SW-1	2/8/07	SW8260_25	<10 (R)	<1	<1	<1	<1	<1	<1	<1	<1	<1	<1	<1	<1	<1	<1
SW-1 (Dup)	2/8/07	SW8260_25	<10 (R)	<1	<1	<1	<1	<1	<1	<1	<1	<1	<1	<1	<1	<1	<1
SW-1	4/20/07	SW8260_25	<10 (R)	<1	<1	<1	<1	<1	<1	<1	<1	<1	<1	<1	<1	<1	<1
SW-1 (Dup)	4/20/07	SW8260_25	<10 (R)	<1	<1	<1	<1	<1	<1	<1	<1	<1	<1	<1	<1	<1	<1
SW-1	7/24/07	SW8260_25	<10	<1	<1	<1	<1	<1	<1	<1	<1	<1	<1	<1	<1	<1	<1
SW-1 (Dup)	7/24/07	SW8260_25	<10	<1	<1	<1	<1	<1	<1	<1	<1	<1	<1	<1	<1	<1	<1
SW-1	10/31/07	SW8260_25	<10	<1	<1	<1	<1	<1	<1	<1	<1	<1	<1	<1	<1	<1	<1
SW-1	4/28/08	SW8260_25	<10	<1	<1	<1	<1	<1	<1	<1	<1	<1	<1	<1	<1	<1	<1
SW-2	11/21/06	SW8260_25	<10	<1	<1	<1	<1	<1	<1	<1	<1	<1	<1	<1	<1	<1	<1
SW-2 (Dup)	11/21/06	SW8260_25	<10	<1	<1	<1	<1	<1	<1	<1	<1	<1	<1	<1	<1	<1	<1
SW-2	2/8/07	SW8260_25	<10 (R)	<1	<1	<1	<1	<1	<1	<1	<1	<1	<1	<1	<1	<1	<1
SW-2	4/20/07	SW8260_25	<10 (R)	<1	<1	<1	<1	<1	<1	<1	<1	<1	<1	<1	<1	<1	<1
SW-2	7/24/07	SW8260_25	<10	<1	<1	<1	<1	<1	<1	<1	<1	<1	<1	<1	<1	<1	<1
SW-2	10/31/07	SW8260_25	<10	<1	<1	<1	<1	<1	<1	<1	<1	<1	<1	<1	<1	<1	<1
SW-2	4/29/08	SW8260_25	<10	<1	<1	<1	<1	<1	<1	<1	<1	<1	<1	<1	<1	<1	<1
SW-2 (Dup)	4/29/08	SW8260_25	<10	<1	<1	<1	<1	<1	<1	<1	<1	<1	<1	<1	<1	<1	<1
SW-3	11/21/06	SW8260_25	<10	<1	<1	<1	<1	<1	<1	<1	<1	<1	<1	<1	<1	<1	<1
SW-3	2/8/07	SW8260_25	4.1 (RJ)	<1	<1	<1	<1	<1	<1	<1	<1	<1	<1	<1	<1	<1	<1
SW-3	4/20/07	SW8260_25	<10 (R)	<1	<1	<1	<1	<1	<1	<1	<1	<1	<1	<1	<1	<1	<1
SW-3	7/24/07	SW8260_25	<10	<1	<1	<1	<1	<1	<1	<1	<1	<1	<1	<1	<1	<1	<1
SW-3	10/31/07	SW8260_25	<10	<1	<1	<1	<1	<1	<1	<1	<1	<1	<1	<1	<1	<1	<1
SW-3 (Dup)	10/31/07	SW8260_25	<10	<1	<1	<1	<1	<1	<1	<1	<1	<1	<1	<1	<1	<1	<1
SW-3	4/28/08	SW8260_25	<10	<1	<1	<1	<1	<1	<1	<1	<1	<1	<1	<1	<1	<1	<1
CDPHE Standards (March 2005):			--	5	--	0.56	4	--	5	100	--	3.5	14	0.2	--	75	--
Federal Drinking Water Standards (MCLs):			--	--	--	--	--	--	--	--	--	--	--	--	5	--	--

Notes: CDPHE - Colorado Department of Public Health and Environment
ug/L - micrograms per Liter (Dup) - Duplicate sample

MCLs - Maximum Contaminant Levels
< - below the Reporting Limit

(B) - Detected in Method Blank

(J) - Result is an estimated value.

(R) - Result is a rejected value.



**TABLE 1
LABORATORY ANALYTICAL RESULTS - VOLATILE ORGANIC COMPOUNDS
LOWRY OU2 LANDFILL SITE
FORMER LOWRY AIR FORCE BASE
DENVER, COLORADO**

Sampling Location / Well ID	Sample Date	Analytical Method	Volatile Organic Compounds (ug/L)														
			1,4-Dichloro benzene	1,1-Dichloro ethane	1,2-Dichloro ethane	1,1-Dichloro ethene	cis-1,2-dichloroethene	trans-1,2-dichloroethene	1,2-Dichloro propane	cis-1,3-di chloropropene	trans-1,3-di chloropropene	Ethylbenzene	2-Hexanone	Bromomethane	Chloro methane	Dibromo methane	
Upgradient																	
BG-5	11/13/06	SW8260_25	<1	<1	<1	<1	<1	<1	<1	<1	<1	<1	<1	<10	<1	<1	<1
BG-5	2/7/07	SW8260_25	<1	<1	<1	<1	<1	<1	<1	<1	<1	<1	<1	<10	<1	<1	<1
BG-5	4/19/07	SW8260_25	<1	<1	<1	<1	<1	<1	<1	<1	<1	<1	<1	<10	<1	<1	<1
BG-5	7/23/07	SW8260_25	<1	<1	<1	<1	<1	<1	<1	<1	<1	<1	<1	<10	<1	<1	<1
BG-5	10/30/07	SW8260_25	<1	<1	<1	<1	<1	<1	<1	<1	<1	<1	<1	<10	<1	<1	<1
BG-5 (Dup)	10/30/07	SW8260_25	<1	<1	<1	<1	<1	<1	<1	<1	<1	<1	<1	<10	<1	<1	<1
BG-5	1/31/08	SW8260_25	<1	<1	<1	<1	<1	<1	<1	<1	<1	<1	<1	<10	<1	<1	<1
BG-5	5/1/08	SW8260_25	<1	<1	<1	<1	<1	<1	<1	<1	<1	<1	<1	<10	<1	<1	<1
BG-6	11/13/06	SW8260_25	<1	<1	<1	<1	<1	<1	<1	<1	<1	<1	<1	<10	<1	<1	<1
BG-6	2/7/07	SW8260_25	<1	<1	<1	<1	<1	<1	<1	<1	<1	<1	<1	<10	<1	<1	<1
BG-6 (Dup)	2/7/07	SW8260_25	<1	<1	<1	<1	<1	<1	<1	<1	<1	<1	<1	<10	<1	<1	<1
BG-6	4/20/07	SW8260_25	<1	<1	<1	<1	<1	<1	<1	<1	<1	<1	<1	<10	<1	<1	<1
BG-6	7/23/07	SW8260_25	<1	<1	<1	<1	<1	<1	<1	<1	<1	<1	<1	<10	<1	<1	<1
BG-6	10/30/07	SW8260_25	<1	<1	<1	<1	<1	<1	<1	<1	<1	<1	<1	<10	<1	<1	<1
BG-6	1/30/08	SW8260_25	<1	<1	<1	<1	<1	<1	<1	<1	<1	<1	<1	<10	<1	<1	<1
BG-6	4/28/08	SW8260_25	<1	<1	<1	<1	<1	<1	<1	<1	<1	<1	<1	<10	<1	<1	<1
LFPOC09	11/13/06	SW8260_25	<1	<1	0.23 (J)	<1	<1	<1	<1	<1	<1	<1	<1	<10	<1	<1	<1
LFPOC09	2/8/07	SW8260_25	<1	<1	0.33 (J)	<1	<1	<1	<1	<1	<1	<1	<1	<10	<1	<1	<1
LFPOC09	4/19/07	SW8260_25	<1	<1	<1	<1	<1	<1	<1	<1	<1	<1	<1	<10	<1	<1	<1
LFPOC09	7/23/07	SW8260_25	<1	<1	<1	<1	<1	<1	<1	<1	<1	<1	<1	<10	<1	<1	<1
LFPOC09	10/31/07	SW8260_25	<1	<1	0.21 (J)	<1	<1	<1	<1	<1	<1	<1	<1	<10	<1	<1	<1
LFPOC09	1/30/08	SW8260_25	<1	<1	<1	<1	<1	<1	<1	<1	<1	<1	<1	<10	<1	<1	<1
LFPOC09	4/28/08	SW8260_25	<1	<1	0.19 (J)	<1	<1	<1	<1	<1	<1	<1	<1	<10	<1	<1	<1
Downgradient																	
LFPOC07	11/13/06	SW8260_25	<1	<1	<1	<1	<1	<1	<1	<1	<1	<1	<1	<10	<1	<1	<1
LFPOC07	2/8/07	SW8260_25	<1	<1	<1	<1	<1	0.25 (J)	<1	<1	<1	<1	<1	<10	<1	<1	<1
LFPOC07	4/19/07	SW8260_25	<1	<1	<1	<1	<1	0.28 (J)	<1	<1	<1	<1	<1	<10	<1	<1	<1
LFPOC07	7/23/07	SW8260_25	<1	<1	<1	<1	<1	<1	<1	<1	<1	<1	<1	<10	<1	<1	<1
LFPOC07	12/19/07	SW8260_25	<1	<1	<1	<1	<1	<1	<1	<1	<1	<1	<1	<10	<1	<1	<1
LFPOC07	1/30/08	SW8260_25	<1	<1	<1	<1	<1	<1	<1	<1	<1	<1	<1	<10	<1	<1	<1
LFPOC07	4/28/08	SW8260_25	<1	<1	<1	<1	<1	0.19 (J)	<1	<1	<1	<1	<1	<10	<1	<1	<1
LFPOC08	11/13/06	SW8260_25	<1	<1	<1	<1	<1	0.13 (J)	<1	<1	<1	<1	<1	<10	<1	<1	<1
LFPOC08	2/7/07	SW8260_25	<1	<1	<1	<1	<1	0.21 (J)	<1	<1	<1	<1	<1	<10	<1	<1	<1
LFPOC08	4/19/07	SW8260_25	<1	<1	<1	<1	<1	0.19 (J)	<1	<1	<1	<1	<1	<10	<1	<1	<1
LFPOC08	7/23/07	SW8260_25	<1	<1	<1	<1	<1	0.2 (J)	<1	<1	<1	<1	<1	<10	<1	<1	<1
LFPOC08	10/30/07	SW8260_25	<1	<1	<1	<1	<1	<1	<1	<1	<1	<1	<1	<10	<1	<1	<1

Notes: CDPHE - Colorado Department of Public Health and Environment
ug/L - micrograms per Liter (Dup) - Duplicate sample

MCL - Maximum Contaminant Levels
< - below the Reporting Limit

(B) - Detected in Method Blank

(J) - Result is an estimated value.

(R) - Result is a rejected value.



**TABLE 1
LABORATORY ANALYTICAL RESULTS - VOLATILE ORGANIC COMPOUNDS
LOWRY OU2 LANDFILL SITE
FORMER LOWRY AIR FORCE BASE
DENVER, COLORADO**

Sampling Location / Well ID	Sample Date	Analytical Method	Volatile Organic Compounds (ug/L)														
			1,4-Dichloro benzene	1,1-Dichloro ethane	1,2-Dichloro ethane	1,1-Dichloro ethene	cis-1,2-dichloroethene	trans-1,2-dichloroethene	1,2-Dichloro propane	cis-1,3-di chloropropene	trans-1,3-di chloropropene	Ethylbenzene	2-Hexanone	Bromomethane	Chloro methane	Dibromo methane	
LFPOC08	1/30/08	SW8260_25	<1	<1	<1	<1	<1	<1	<1	<1	<1	<1	<1	<10	<1	<1	<1
LFPOC08	4/28/08	SW8260_25	<1	<1	<1	<1	<1	<1	<1	<1	<1	<1	<1	<10	<1	<1	<1
LFPOC08 (Dup)	4/28/08	SW8260_25	<1	<1	<1	<1	<1	<1	<1	<1	<1	<1	<1	<10	<1	<1	<1
LFPOC10	11/13/06	SW8260_25	<1	<1	<1	<1	<1	<1	<1	<1	<1	<1	<1	<10	<1	<1	<1
LFPOC10	2/7/07	SW8260_25	<1	<1	<1	<1	<1	<1	<1	<1	<1	<1	<1	<10	<1	<1	<1
LFPOC10	4/19/07	SW8260_25	<1	<1	<1	<1	<1	<1	<1	<1	<1	<1	<1	<10	<1	<1	<1
LFPOC10	7/23/07	SW8260_25	<1	<1	<1	<1	<1	<1	<1	<1	<1	<1	<1	<10	<1	<1	<1
LFPOC10	10/30/07	SW8260_25	<1	<1	<1	<1	<1	<1	<1	<1	<1	<1	<1	<10	<1	<1	<1
LFPOC10	1/30/08	SW8260_25	<1	<1	<1	<1	<1	<1	<1	<1	<1	<1	<1	<10	<1	<1	<1
LFPOC10 (Dup)	1/30/08	SW8260_25	<1	<1	<1	<1	<1	<1	<1	<1	<1	<1	<1	<10	<1	<1	<1
LFPOC10	5/1/08	SW8260_25	<1	<1	<1	<1	<1	<1	<1	<1	<1	<1	<1	<10	<1	<1	<1
LFPOC11	11/13/06	SW8260_25	<1	<1	<1	<1	<1	<1	<1	<1	<1	<1	<1	<10	<1	<1	<1
LFPOC11	2/7/07	SW8260_25	<1	<1	<1	<1	<1	<1	<1	<1	<1	<1	<1	<10	<1	<1	<1
LFPOC11	4/19/07	SW8260_25	<1	<1	<1	<1	<1	<1	<1	<1	<1	<1	<1	<10	<1	<1	<1
LFPOC11	7/23/07	SW8260_25	<1	<1	<1	<1	<1	<1	<1	<1	<1	<1	<1	<10	<1	<1	<1
LFPOC11	10/30/07	SW8260_25	<1	<1	<1	<1	<1	<1	<1	<1	<1	<1	<1	<10	<1	<1	<1
LFPOC11	1/30/08	SW8260_25	<1	<1	<1	<1	<1	<1	<1	<1	<1	<1	<1	<10	<1	<1	<1
LFPOC11	4/28/08	SW8260_25	<1	<1	<1	<1	<1	<1	<1	<1	<1	<1	<1	<10	<1	<1	<1
LFPOC12	11/13/06	SW8260_25	<1	<1	<1	<1	<1	<1	<1	<1	<1	<1	<1	<10	<1	<1	<1
LFPOC12	2/8/07	SW8260_25	<1	<1	<1	<1	<1	<1	<1	<1	<1	<1	<1	<10	<1	<1	<1
LFPOC12	4/19/07	SW8260_25	<1	<1	<1	<1	<1	<1	<1	<1	<1	<1	<1	<10	<1	<1	<1
LFPOC12 (Dup)	4/19/07	SW8260_25	<1	<1	<1	<1	<1	<1	<1	<1	<1	<1	<1	<10	<1	<1	<1
LFPOC12	7/23/07	SW8260_25	<1	<1	<1	<1	<1	<1	<1	<1	<1	<1	<1	<10	<1	<1	<1
LFPOC12 (Dup)	7/23/07	SW8260_25	<1	<1	<1	<1	<1	<1	<1	<1	<1	<1	<1	<10	<1	<1	<1
LFPOC12	10/30/07	SW8260_25	<1	<1	<1	<1	<1	<1	<1	<1	<1	<1	<1	<10	<1	<1	<1
LFPOC12	1/30/08	SW8260_25	<1	<1	<1	<1	<1	<1	<1	<1	<1	<1	<1	<10	<1	<1	<1
LFPOC12	4/28/08	SW8260_25	<1	<1	<1	<1	<1	<1	<1	<1	<1	<1	<1	<10	<1	<1	<1
LFPOC13	11/13/06	SW8260_25	<1	<1	<1	<1	<1	<1	<1	<1	<1	<1	<1	<10	<1	<1	<1
LFPOC13	2/7/07	SW8260_25	<1	<1	<1	<1	<1	<1	<1	<1	<1	<1	<1	<10	<1	<1	<1
LFPOC13	4/20/07	SW8260_25	<1	<1	<1	<1	<1	<1	<1	<1	<1	<1	<1	<10	<1	<1	<1
LFPOC13	7/24/07	SW8260_25	<1	<1	<1	<1	<1	<1	<1	<1	<1	<1	<1	<10	<1	<1	<1
LFPOC13	10/31/07	SW8260_25	<1	<1	<1	<1	<1	<1	<1	<1	<1	<1	<1	<10	<1	<1	<1
LFPOC13	1/31/08	SW8260_25	<1	<1	<1	<1	<1	<1	<1	<1	<1	<1	<1	<10	<1	<1	<1
LFPOC13	4/28/08	SW8260_25	<1	<1	<1	<1	<1	<1	<1	<1	<1	<1	<1	<10	<1	<1	<1
LZ-13	11/13/06	SW8260_25	<1	<1	<1	<1	<1	<1	<1	<1	<1	<1	<1	<10	<1	<1	<1
LZ-13	2/8/07	SW8260_25	<1	<1	<1	<1	<1	<1	<1	<1	<1	<1	<1	<10	<1	<1	<1
LZ-13	4/19/07	SW8260_25	<1	<1	<1	<1	<1	<1	<1	<1	<1	<1	<1	<10	<1	<1	<1

Notes: CDPHE - Colorado Department of Public Health and Environment
ug/L - micrograms per Liter (Dup) - Duplicate sample

MCL - Maximum Contaminant Levels
< - below the Reporting Limit

(B) - Detected in Method Blank

(J) - Result is an estimated value.

(R) - Result is a rejected value.



**TABLE 1
LABORATORY ANALYTICAL RESULTS - VOLATILE ORGANIC COMPOUNDS
LOWRY OU2 LANDFILL SITE
FORMER LOWRY AIR FORCE BASE
DENVER, COLORADO**

Sampling Location / Well ID	Sample Date	Analytical Method	Volatile Organic Compounds (ug/L)														
			1,4-Dichloro benzene	1,1-Dichloro ethane	1,2-Dichloro ethane	1,1-Dichloro ethene	cis-1,2-dichloroethene	trans-1,2-dichloroethene	1,2-Dichloro propane	cis-1,3-di chloropropene	trans-1,3-di chloropropene	Ethylbenzene	2-Hexanone	Bromomethane	Chloro methane	Dibromo methane	
LZ-13	7/23/07	SW8260_25	<1	<1	<1	<1	<1	<1	<1	<1	<1	<1	<1	<10	<1	<1	<1
LZ-13	10/30/07	SW8260_25	<1	<1	<1	<1	<1	<1	<1	<1	<1	<1	<1	<10	<1	<1	<1
LZ-13	1/30/08	SW8260_25	<1	<1	<1	<1	<1	<1	<1	<1	<1	<1	<1	<10	<1	<1	<1
LZ-13	4/28/08	SW8260_25	<1	<1	<1	<1	<1	<1	<1	<1	<1	<1	<1	<10	<1	<1	<1
Surface Water																	
SW-1	11/21/06	SW8260_25	<1	<1	<1	<1	<1	<1	<1	<1	<1	<1	<1	<10	<1	<1	<1
SW-1	2/8/07	SW8260_25	<1	<1	<1	<1	<1	<1	<1	<1	<1	<1	<1	<10	<1	<1	<1
SW-1 (Dup)	2/8/07	SW8260_25	<1	<1	<1	<1	<1	<1	<1	<1	<1	<1	<1	<10	<1	<1	<1
SW-1	4/20/07	SW8260_25	<1	<1	<1	<1	<1	<1	<1	<1	<1	<1	<1	<10	<1	<1	<1
SW-1 (Dup)	4/20/07	SW8260_25	<1	<1	<1	<1	<1	<1	<1	<1	<1	<1	<1	<10	<1	<1	<1
SW-1	7/24/07	SW8260_25	<1	<1	<1	<1	<1	<1	<1	<1	<1	<1	<1	<10	<1	<1	<1
SW-1 (Dup)	7/24/07	SW8260_25	<1	<1	<1	<1	<1	<1	<1	<1	<1	<1	<1	<10	<1	<1	<1
SW-1	10/31/07	SW8260_25	<1	<1	<1	<1	<1	<1	<1	<1	<1	<1	<1	<10	<1	<1	<1
SW-1	4/28/08	SW8260_25	<1	<1	<1	<1	<1	<1	<1	<1	<1	<1	<1	<10	<1	<1	<1
SW-2	11/21/06	SW8260_25	<1	<1	<1	<1	<1	<1	<1	<1	<1	<1	<1	<10	<1	<1	<1
SW-2 (Dup)	11/21/06	SW8260_25	<1	<1	<1	<1	<1	<1	<1	<1	<1	<1	<1	<10	<1	<1	<1
SW-2	2/8/07	SW8260_25	<1	<1	<1	<1	<1	<1	<1	<1	<1	<1	<1	<10	<1	<1	<1
SW-2	4/20/07	SW8260_25	<1	<1	<1	<1	<1	<1	<1	<1	<1	<1	<1	<10	<1	<1	<1
SW-2	7/24/07	SW8260_25	<1	<1	<1	<1	<1	<1	<1	<1	<1	<1	<1	<10	<1	<1	<1
SW-2	10/31/07	SW8260_25	<1	<1	<1	<1	<1	<1	<1	<1	<1	<1	<1	<10	<1	<1	<1
SW-2	4/29/08	SW8260_25	<1	<1	<1	<1	<1	<1	<1	<1	<1	<1	<1	<10	<1	<1	<1
SW-2 (Dup)	4/29/08	SW8260_25	<1	<1	<1	<1	<1	<1	<1	<1	<1	<1	<1	<10	<1	<1	<1
SW-3	11/21/06	SW8260_25	<1	<1	<1	<1	<1	<1	<1	<1	<1	<1	<1	<10	<1	<1	<1
SW-3	2/8/07	SW8260_25	<1	<1	<1	<1	<1	<1	<1	<1	<1	<1	<1	<10	<1	<1	<1
SW-3	4/20/07	SW8260_25	<1	<1	<1	<1	<1	<1	<1	<1	<1	<1	<1	<10	<1	<1	<1
SW-3	7/24/07	SW8260_25	<1	<1	<1	<1	<1	<1	<1	<1	<1	<1	<1	<10	<1	<1	<1
SW-3	10/31/07	SW8260_25	<1	<1	<1	<1	<1	<1	<1	<1	<1	<1	<1	<10	<1	<1	<1
SW-3 (Dup)	10/31/07	SW8260_25	<1	<1	<1	<1	<1	<1	<1	<1	<1	<1	<1	<10	<1	<1	<1
SW-3	4/28/08	SW8260_25	<1	<1	<1	<1	<1	<1	<1	<1	<1	<1	<1	<10	<1	<1	<1
CDPHE Standards (March 2005):			75	--	5.0	--	--	--	5	--	--	700	--	--	--	--	--
Federal Drinking Water Standards (MCLs):			--	--	--	--	7	100	--	5	--	--	--	--	--	--	--

Notes: CDPHE - Colorado Department of Public Health and Environment
ug/L - micrograms per Liter (Dup) - Duplicate sample

MCL - Maximum Contaminant Levels
< - below the Reporting Limit

(B) - Detected in Method Blank

(J) - Result is an estimated value.

(R) - Result is a rejected value.

**TABLE 1
LABORATORY ANALYTICAL RESULTS - VOLATILE ORGANIC COMPOUNDS
LOWRY OU2 LANDFILL SITE
FORMER LOWRY AIR FORCE BASE
DENVER, COLORADO**

Sampling Location / Well ID	Sample Date	Analytical Method	Volatile Organic Compounds (ug/L)													
			Methylene chloride	2-Butanone	Iodomethane	4-methyl-2-pentanone	Styrene	1,1,1,2-tetra chloroethane	1,1,2,2-tetra chloroethane	Tetrachloro ethene	Toluene	1,1,1-Tri chloroethane	1,1,2-Tri chloroethane	Trichloro ethene	Trichlorofluoro methane	1,2,3-Tri chloropropane
Upgradient																
BG-5	11/13/06	SW8260_25	<1	<10	<1	<10	<1	<1	<1	<1	<1	<1	<1	<1	<1	<1
BG-5	2/7/07	SW8260_25	<1	<10 (R)	<1	<10	<1	<1	<1	<1	<1	<1	<1	<1	<1	<1
BG-5	4/19/07	SW8260_25	<1	<10	<1	<10	<1	<1	<1	<1	<1	<1	<1	<1	<1	<1
BG-5	7/23/07	SW8260_25	<1	<10	<1	<10	<1	<1	<1	<1	<1	<1	<1	<1	<1	<1
BG-5	10/30/07	SW8260_25	<1	<10	<1	<10	<1	<1	<1	<1	<1	<1	<1	<1	<1	<1
BG-5 (Dup)	10/30/07	SW8260_25	<1	<10	<1	<10	<1	<1	<1	<1	<1	<1	<1	<1	<1	<1
BG-5	1/31/08	SW8260_25	<1	<10	<1	<10	<1	<1	<1	<1	<1	<1	<1	<1	<1	<1
BG-5	5/1/08	SW8260_25	<1	<10	<1	<10	<1	<1	<1	<1	<1	<1	<1	<1	<1	<1
BG-6	11/13/06	SW8260_25	<1	<10	<1	<10	<1	<1	<1	<1	<1	<1	<1	<1	<1	<1
BG-6	2/7/07	SW8260_25	<1	<10 (R)	<1	<10	<1	<1	<1	<1	<1	<1	<1	<1	<1	<1
BG-6 (Dup)	2/7/07	SW8260_25	<1	<10 (R)	<1	<10	<1	<1	<1	<1	<1	<1	<1	<1	<1	<1
BG-6	4/20/07	SW8260_25	<1	<10	<1	<10	<1	<1	<1	<1	<1	<1	<1	<1	<1	<1
BG-6	7/23/07	SW8260_25	<1	<10	<1	<10	<1	<1	<1	<1	<1	<1	<1	<1	<1	<1
BG-6	10/30/07	SW8260_25	<1	<10	<1	<10	<1	<1	<1	<1	<1	<1	<1	<1	<1	<1
BG-6	1/30/08	SW8260_25	<1	<10	<1	<10	<1	<1	<1	<1	<1	<1	<1	<1	<1	<1
BG-6	4/28/08	SW8260_25	<1	<10	<1	<10	<1	<1	<1	<1	<1	<1	<1	<1	<1	<1
LFPOC09	11/13/06	SW8260_25	<1	<10	<1	<10	<1	<1	<1	<1	<1	<1	<1	<1	<1	<1
LFPOC09	2/8/07	SW8260_25	<1	<10 (R)	<1	<10	<1	<1	<1	<1	<1	<1	<1	<1	<1	<1
LFPOC09	4/19/07	SW8260_25	<1	<10	<1	<10	<1	<1	<1	<1	<1	<1	<1	<1	<1	<1
LFPOC09	7/23/07	SW8260_25	<1	<10	<1	<10	<1	<1	<1	<1	<1	<1	<1	<1	<1	<1
LFPOC09	10/31/07	SW8260_25	<1	<10	<1	<10	<1	<1	<1	<1	<1	<1	<1	<1	<1	<1
LFPOC09	1/30/08	SW8260_25	<1	<10	<1	<10	<1	<1	<1	<1	<1	<1	<1	<1	<1	<1
LFPOC09	4/28/08	SW8260_25	<1	<10	<1	<10	<1	<1	<1	<1	<1	<1	<1	<1	<1	<1
Downgradient																
LFPOC07	11/13/06	SW8260_25	<1	<10	<1	<10	<1	<1	<1	<1	<1	<1	<1	<1	<1	<1
LFPOC07	2/8/07	SW8260_25	<1	<10 (R)	<1	<10	<1	<1	<1	<1	<1	<1	<1	0.43 (J)	<1	<1
LFPOC07	4/19/07	SW8260_25	<1	<10	<1	<10	<1	<1	<1	<1	<1	<1	<1	0.6 (J)	<1	<1
LFPOC07	7/23/07	SW8260_25	<1	<10	<1	<10	<1	<1	<1	<1	<1	<1	<1	0.62 (J)	<1	<1
LFPOC07	12/19/07	SW8260_25	<1	<10	<1	<10	<1	<1	<1	<1	<1	<1	<1	0.58 (J)	<1	<1
LFPOC07	1/30/08	SW8260_25	<1	<10	<1	<10	<1	<1	<1	<1	<1	<1	<1	0.42 (J)	<1	<1
LFPOC07	4/28/08	SW8260_25	<1	<10	<1	<10	<1	<1	<1	<1	<1	<1	<1	0.4 (J)	<1	<1
LFPOC07	4/28/08	SW8260_25	<1	<10	<1	<10	<1	<1	<1	<1	<1	<1	<1	0.48 (J)	<1	<1
LFPOC08	11/13/06	SW8260_25	<1	<10	<1	<10	<1	<1	<1	<1	<1	<1	<1	<1	<1	<1
LFPOC08	2/7/07	SW8260_25	<1	<10 (R)	<1	<10	<1	<1	<1	<1	<1	<1	<1	0.13 (J)	<1	<1
LFPOC08	4/19/07	SW8260_25	<1	<10	<1	<10	<1	<1	<1	<1	<1	<1	<1	0.21 (J)	<1	<1
LFPOC08	7/23/07	SW8260_25	<1	<10	<1	<10	<1	<1	<1	<1	<1	<1	<1	<1	<1	<1
LFPOC08	10/30/07	SW8260_25	<1	<10	<1	<10	<1	<1	<1	<1	<1	<1	<1	0.19 (J)	<1	<1
LFPOC08	10/30/07	SW8260_25	<1	<10	<1	<10	<1	<1	<1	<1	<1	<1	<1	0.18 (J)	<1	<1

Notes: CDPHE - Colorado Department of Public Health and Environment
ug/L - micrograms per Liter (Dup) - Duplicate sample

MCL - Maximum Contaminant Levels
< - below the Reporting Limit

(B) - Detected in Method Blank

(J) - Result is an estimated value.

(R) - Result is a rejected value.



TABLE 1
LABORATORY ANALYTICAL RESULTS - VOLATILE ORGANIC COMPOUNDS
LOWRY OU2 LANDFILL SITE
FORMER LOWRY AIR FORCE BASE
DENVER, COLORADO

Sampling Location / Well ID	Sample Date	Analytical Method	Volatile Organic Compounds (ug/L)													
			Methylene chloride	2-Butanone	Iodomethane	4-methyl-2-pentanone	Styrene	1,1,1,2-tetra chloroethane	1,1,2,2-tetra chloroethane	Tetrachloro ethene	Toluene	1,1,1-Tri chloroethane	1,1,2-Tri chloroethane	Trichloro ethene	Trichlorofluoro methane	1,2,3-Tri chloropropane
LFPOC08	1/30/08	SW8260_25	<1	<10	<1	<10	<1	<1	<1	<1	<1	<1	<1	<1	<1	<1
LFPOC08	4/28/08	SW8260_25	<1	<10	<1	<10	<1	<1	<1	<1	<1	<1	<1	<1	<1	<1
LFPOC08 (Dup)	4/28/08	SW8260_25	<1	<10	<1	<10	<1	<1	<1	<1	<1	<1	<1	<1	<1	<1
LFPOC10	11/13/06	SW8260_25	<1	<10	<1	<10	<1	<1	<1	<1	<1	<1	<1	<1	<1	<1
LFPOC10	2/7/07	SW8260_25	<1	<10 (R)	<1	<10	<1	<1	<1	<1	<1	<1	<1	<1	<1	<1
LFPOC10	4/19/07	SW8260_25	<1	<10	<1	<10	<1	<1	<1	<1	<1	<1	<1	<1	<1	<1
LFPOC10	7/23/07	SW8260_25	<1	<10	<1	<10	<1	<1	<1	<1	<1	<1	<1	<1	<1	<1
LFPOC10	10/30/07	SW8260_25	<1	<10	<1	<10	<1	<1	<1	<1	<1	<1	<1	<1	<1	<1
LFPOC10	1/30/08	SW8260_25	<1	<10	<1	<10	<1	<1	<1	<1	<1	<1	<1	<1	<1	<1
LFPOC10 (Dup)	1/30/08	SW8260_25	<1	<10	<1	<10	<1	<1	<1	<1	<1	<1	<1	<1	<1	<1
LFPOC10	5/1/08	SW8260_25	<1	<10	<1	<10	<1	<1	<1	<1	<1	<1	<1	<1	<1	<1
LFPOC11	11/13/06	SW8260_25	<1	<10	<1	<10	<1	<1	<1	<1	0.099 (J)	<1	<1	<1	<1	<1
LFPOC11	2/7/07	SW8260_25	<1	<10 (R)	<1	<10	<1	<1	<1	<1	<1	<1	<1	<1	<1	<1
LFPOC11	4/19/07	SW8260_25	<1	<10	<1	<10	<1	<1	<1	<1	<1	<1	<1	<1	<1	<1
LFPOC11	7/23/07	SW8260_25	<1	<10	<1	<10	<1	<1	<1	<1	<1	<1	<1	<1	<1	<1
LFPOC11	10/30/07	SW8260_25	<1	<10	<1	<10	<1	<1	<1	<1	<1	<1	<1	<1	<1	<1
LFPOC11	1/30/08	SW8260_25	<1	<10	<1	<10	<1	<1	<1	<1	<1	<1	<1	<1	<1	<1
LFPOC11	4/28/08	SW8260_25	<1	<10	<1	<10	<1	<1	<1	<1	<1	<1	<1	<1	<1	<1
LFPOC12	11/13/06	SW8260_25	<1	<10	<1	<10	<1	<1	<1	<1	<1	<1	<1	<1	<1	<1
LFPOC12	2/8/07	SW8260_25	<1	<10 (R)	<1	<10	<1	<1	<1	<1	<1	<1	<1	<1	<1	<1
LFPOC12	4/19/07	SW8260_25	<1	<10	<1	<10	<1	<1	<1	<1	<1	<1	<1	<1	<1	<1
LFPOC12 (Dup)	4/19/07	SW8260_25	<1	<10	<1	<10	<1	<1	<1	<1	<1	<1	<1	<1	<1	<1
LFPOC12	7/23/07	SW8260_25	<1	<10	<1	<10	<1	<1	<1	<1	<1	<1	<1	<1	<1	<1
LFPOC12 (Dup)	7/23/07	SW8260_25	<1	<10	<1	<10	<1	<1	<1	<1	<1	<1	<1	<1	<1	<1
LFPOC12	10/30/07	SW8260_25	<1	<10	<1	<10	<1	<1	<1	<1	<1	<1	<1	<1	<1	<1
LFPOC12	1/30/08	SW8260_25	<1	<10	<1	<10	<1	<1	<1	<1	<1	<1	<1	<1	<1	<1
LFPOC12	4/28/08	SW8260_25	<1	<10	<1	<10	<1	<1	<1	<1	<1	<1	<1	<1	<1	<1
LFPOC13	11/13/06	SW8260_25	<1	<10	<1	<10	<1	<1	<1	<1	<1	<1	<1	<1	<1	<1
LFPOC13	2/7/07	SW8260_25	<1	<10 (R)	<1	<10	<1	<1	<1	<1	<1	<1	<1	<1	<1	<1
LFPOC13	4/20/07	SW8260_25	<1	<10	<1	<10	<1	<1	<1	<1	<1	<1	<1	<1	<1	<1
LFPOC13	7/24/07	SW8260_25	<1	<10	<1	<10	<1	<1	<1	<1	<1	<1	<1	<1	<1	<1
LFPOC13	10/31/07	SW8260_25	<1	<10	<1	<10	<1	<1	<1	<1	<1	<1	<1	<1	<1	<1
LFPOC13	1/31/08	SW8260_25	<1	<10	<1	<10	<1	<1	<1	<1	<1	<1	<1	<1	<1	<1
LFPOC13	4/28/08	SW8260_25	<1	<10	<1	<10	<1	<1	<1	<1	<1	<1	<1	<1	<1	<1
LZ-13	11/13/06	SW8260_25	<1	<10	<1	<10	<1	<1	<1	<1	<1	<1	<1	<1	<1	<1
LZ-13	2/8/07	SW8260_25	<1	<10 (R)	<1	<10	<1	<1	<1	<1	<1	<1	<1	<1	<1	<1
LZ-13	4/19/07	SW8260_25	<1	<10	<1	<10	<1	<1	<1	<1	<1	<1	<1	<1	<1	<1

Notes: CDPHE - Colorado Department of Public Health and Environment
ug/L - micrograms per Liter (Dup) - Duplicate sample

MCL - Maximum Contaminant Levels
< - below the Reporting Limit

(B) - Detected in Method Blank

(J) - Result is an estimated value.

(R) - Result is a rejected value.



**TABLE 1
LABORATORY ANALYTICAL RESULTS - VOLATILE ORGANIC COMPOUNDS
LOWRY OU2 LANDFILL SITE
FORMER LOWRY AIR FORCE BASE
DENVER, COLORADO**

Sampling Location / Well ID	Sample Date	Analytical Method	Volatile Organic Compounds (ug/L)													
			Methylene chloride	2-Butanone	Iodomethane	4-methyl-2-pentanone	Styrene	1,1,1,2-tetra chloroethane	1,1,2,2-tetra chloroethane	Tetrachloro ethene	Toluene	1,1,1-Tri chloroethane	1,1,2-Tri chloroethane	Trichloro ethene	Trichlorofluoro methane	1,2,3-Tri chloropropane
LZ-13	7/23/07	SW8260_25	<1	<10	<1	<10	<1	<1	<1	<1	<1	<1	<1	<1	<1	<1
LZ-13	10/30/07	SW8260_25	<1	<10	<1	<10	<1	<1	<1	<1	<1	<1	<1	<1	<1	<1
LZ-13	1/30/08	SW8260_25	<1	<10	<1	<10	<1	<1	<1	<1	<1	<1	<1	<1	<1	<1
LZ-13	4/28/08	SW8260_25	<1	<10	<1	<10	<1	<1	<1	<1	<1	<1	<1	<1	<1	<1
Surface Water																
SW-1	11/21/06	SW8260_25	<1	<10	<1	<10	<1	<1	<1	<1	<1	<1	<1	<1	<1	<1
SW-1	2/8/07	SW8260_25	<1	<10 (R)	<1	<10	<1	<1	<1	<1	<1	<1	<1	<1	<1	<1
SW-1 (Dup)	2/8/07	SW8260_25	<1	<10 (R)	<1	<10	<1	<1	<1	<1	<1	<1	<1	<1	<1	<1
SW-1	4/20/07	SW8260_25	<1	<10	<1	<10	<1	<1	<1	<1	<1	<1	<1	<1	<1	<1
SW-1 (Dup)	4/20/07	SW8260_25	<1	<10	<1	<10	<1	<1	<1	<1	<1	<1	<1	<1	<1	<1
SW-1	7/24/07	SW8260_25	<1	<10	<1	<10	<1	<1	<1	<1	<1	<1	<1	<1	<1	<1
SW-1 (Dup)	7/24/07	SW8260_25	<1	<10	<1	<10	<1	<1	<1	<1	<1	<1	<1	<1	<1	<1
SW-1	10/31/07	SW8260_25	<1	<10	<1	<10	<1	<1	<1	<1	<1	<1	<1	<1	<1	<1
SW-1	4/28/08	SW8260_25	<1	<10	<1	<10	<1	<1	<1	<1	<1	<1	<1	<1	<1	<1
SW-2	11/21/06	SW8260_25	<1	<10	<1	<10	<1	<1	<1	<1	<1	<1	<1	<1	<1	<1
SW-2 (Dup)	11/21/06	SW8260_25	<1	<10	<1	<10	<1	<1	<1	<1	<1	<1	<1	<1	<1	<1
SW-2	2/8/07	SW8260_25	<1	<10 (R)	<1	<10	<1	<1	<1	<1	0.26 (J)	<1	<1	<1	<1	<1
SW-2	4/20/07	SW8260_25	<1	<10	<1	<10	<1	<1	<1	<1	<1	<1	<1	<1	<1	<1
SW-2	7/24/07	SW8260_25	<1	<10	<1	<10	<1	<1	<1	<1	<1	<1	<1	<1	<1	<1
SW-2	10/31/07	SW8260_25	<1	<10	<1	<10	<1	<1	<1	<1	<1	<1	<1	<1	<1	<1
SW-2	4/29/08	SW8260_25	<1	<10	<1	<10	<1	<1	<1	<1	<1	<1	<1	<1	<1	<1
SW-2 (Dup)	4/29/08	SW8260_25	<1	<10	<1	<10	<1	<1	<1	<1	<1	<1	<1	<1	<1	<1
SW-3	11/21/06	SW8260_25	<1	<10	<1	<10	<1	<1	<1	<1	<1	<1	<1	<1	<1	<1
SW-3	2/8/07	SW8260_25	<1	<10 (R)	<1	<10	<1	<1	<1	<1	0.25 (J)	<1	<1	<1	<1	<1
SW-3	4/20/07	SW8260_25	<1	<10	<1	<10	<1	<1	<1	<1	<1	<1	<1	<1	<1	<1
SW-3	7/24/07	SW8260_25	<1	<10	<1	<10	<1	<1	<1	<1	<1	<1	<1	<1	<1	<1
SW-3	10/31/07	SW8260_25	<1	<10	<1	<10	<1	<1	<1	<1	<1	<1	<1	<1	<1	<1
SW-3 (Dup)	10/31/07	SW8260_25	<1	<10	<1	<10	<1	<1	<1	<1	<1	<1	<1	<1	<1	<1
SW-3	4/28/08	SW8260_25	<1	<10	<1	<10	<1	<1	<1	<1	<1	<1	<1	<1	<1	<1
CDPHE Standards (March 2005):			5	--	--	--	100	--	0.18	5	1000	200	5	--	--	--
Federal Drinking Water Standards (MCLs):			--	--	--	--	--	--	--	--	--	--	5	--	--	--

Notes: CDPHE - Colorado Department of Public Health and Environment
ug/L - micrograms per Liter (Dup) - Duplicate sample

MCL - Maximum Contaminant Levels
< - below the Reporting Limit

(B) - Detected in Method Blank

(J) - Result is an estimated value.

(R) - Result is a rejected value.



**TABLE 1
LABORATORY ANALYTICAL RESULTS - VOLATILE ORGANIC COMPOUNDS
LOWRY OU2 LANDFILL SITE
FORMER LOWRY AIR FORCE BASE
DENVER, COLORADO**

Sampling Location / Well ID	Sample Date	Analytical Method	Volatile Organic Compounds (ug/L)				
			Vinyl acetate	Vinyl chloride	Total xylenes	Xylenes, m and p	Xylenes, o
Upgradient							
BG-5	11/13/06	SW8260_25	<1	<1	<2	<1	<1
BG-5	2/7/07	SW8260_25	<2	<1	<2	<1	<1
BG-5	4/19/07	SW8260_25	<2	<1	<2	<1	<1
BG-5	7/23/07	SW8260_25	<2	<1	<2	<1	<1
BG-5	10/30/07	SW8260_25	<2	<1	<2	<1	<1
BG-5 (Dup)	10/30/07	SW8260_25	<2	<1	<2	<1	<1
BG-5	1/31/08	SW8260_25	<2	<1	<2	<1	<1
BG-5	5/1/08	SW8260_25	<2	<1	<2	<1	<1
BG-6	11/13/06	SW8260_25	<1	<1	<2	<1	<1
BG-6	2/7/07	SW8260_25	<2	<1	<2	<1	<1
BG-6 (Dup)	2/7/07	SW8260_25	<2	<1	<2	<1	<1
BG-6	4/20/07	SW8260_25	<2	<1	<2	<1	<1
BG-6	7/23/07	SW8260_25	<2	<1	<2	<1	<1
BG-6	10/30/07	SW8260_25	<2	<1	<2	<1	<1
BG-6	1/30/08	SW8260_25	<2	<1	<2	<1	<1
BG-6	4/28/08	SW8260_25	<2	<1	<2	<1	<1
LFPOC09	11/13/06	SW8260_25	<1	<1	<2	<1	<1
LFPOC09	2/8/07	SW8260_25	<2	<1	<2	<1	<1
LFPOC09	4/19/07	SW8260_25	<2	<1	<2	<1	<1
LFPOC09	7/23/07	SW8260_25	<2	<1	<2	<1	<1
LFPOC09	10/31/07	SW8260_25	<2	<1	<2	<1	<1
LFPOC09	1/30/08	SW8260_25	<2	<1	<2	<1	<1
LFPOC09	4/28/08	SW8260_25	<2	<1	<2	<1	<1
Downgradient							
LFPOC07	11/13/06	SW8260_25	<1	<1	<2	<1	<1
LFPOC07	2/8/07	SW8260_25	<2	<1	<2	<1	<1
LFPOC07	4/19/07	SW8260_25	<2	<1	<2	<1	<1
LFPOC07	7/23/07	SW8260_25	<2	<1	<2	<1	<1
LFPOC07	12/19/07	SW8260_25	<2	<1	<2	<1	<1
LFPOC07	1/30/08	SW8260_25	<2	<1	<2	<1	<1
LFPOC07	4/28/08	SW8260_25	<2	<1	<2	<1	<1
LFPOC08	11/13/06	SW8260_25	<1	<1	<2	<1	<1
LFPOC08	2/7/07	SW8260_25	<2	<1	<2	<1	<1
LFPOC08	4/19/07	SW8260_25	<2	<1	<2	<1	<1
LFPOC08	7/23/07	SW8260_25	<2	<1	<2	<1	<1

Notes: CDPHE - Colorado Department of Public Health and Environment
(B) - Detected in Method Blank (J) - Result is an estimated value.
ug/L - micrograms per Liter (Dup) - Duplicate sample

MCLs - Maximum Contaminant Levels
(R) - Result is a rejected value.
< - below the Reporting Limit



TABLE 1
LABORATORY ANALYTICAL RESULTS - VOLATILE ORGANIC COMPOUNDS
LOWRY OU2 LANDFILL SITE
FORMER LOWRY AIR FORCE BASE
DENVER, COLORADO

Sampling Location / Well ID	Sample Date	Analytical Method	Volatile Organic Compounds (ug/L)				
			Vinyl acetate	Vinyl chloride	Total xylenes	Xylenes, m and p	Xylenes, o
LFPOC08	10/30/07	SW8260_25	<2	<1	<2	<1	<1
LFPOC08	1/30/08	SW8260_25	<2	<1	<2	<1	<1
LFPOC08	4/28/08	SW8260_25	<2	<1	<2	<1	<1
LFPOC08 (Dup)	4/28/08	SW8260_25	<2	<1	<2	<1	<1
LFPOC10	11/13/06	SW8260_25	<1	<1	<2	<1	<1
LFPOC10	2/7/07	SW8260_25	<2	<1	<2	<1	<1
LFPOC10	4/19/07	SW8260_25	<2	<1	<2	<1	<1
LFPOC10	7/23/07	SW8260_25	<2	<1	<2	<1	<1
LFPOC10	10/30/07	SW8260_25	<2	<1	<2	<1	<1
LFPOC10	1/30/08	SW8260_25	<2	<1	<2	<1	<1
LFPOC10 (Dup)	1/30/08	SW8260_25	<2	<1	<2	<1	<1
LFPOC10	5/1/08	SW8260_25	<2	<1	<2	<1	<1
LFPOC11	11/13/06	SW8260_25	<1	<1	<2	<1	<1
LFPOC11	2/7/07	SW8260_25	<2	<1	<2	<1	<1
LFPOC11	4/19/07	SW8260_25	<2	<1	<2	<1	<1
LFPOC11	7/23/07	SW8260_25	<2	<1	<2	<1	<1
LFPOC11	10/30/07	SW8260_25	<2	<1	<2	<1	<1
LFPOC11	1/30/08	SW8260_25	<2	<1	<2	<1	<1
LFPOC11	4/28/08	SW8260_25	<2	<1	<2	<1	<1
LFPOC12	11/13/06	SW8260_25	<1	<1	<2	<1	<1
LFPOC12	2/8/07	SW8260_25	<2	<1	<2	<1	<1
LFPOC12	4/19/07	SW8260_25	<2	<1	<2	<1	<1
LFPOC12 (Dup)	4/19/07	SW8260_25	<2	<1	<2	<1	<1
LFPOC12	7/23/07	SW8260_25	<2	<1	<2	<1	<1
LFPOC12 (Dup)	7/23/07	SW8260_25	<2	<1	<2	<1	<1
LFPOC12	10/30/07	SW8260_25	<2	<1	<2	<1	<1
LFPOC12	1/30/08	SW8260_25	<2	<1	<2	<1	<1
LFPOC12	4/28/08	SW8260_25	<2	<1	<2	<1	<1
LFPOC13	11/13/06	SW8260_25	<1	<1	<2	<1	<1
LFPOC13	2/7/07	SW8260_25	<2	<1	<2	<1	<1
LFPOC13	4/20/07	SW8260_25	<2	<1	<2	<1	<1
LFPOC13	7/24/07	SW8260_25	<2	<1	<2	<1	<1
LFPOC13	10/31/07	SW8260_25	<2	<1	<2	<1	<1
LFPOC13	1/31/08	SW8260_25	<2	<1	<2	<1	<1
LFPOC13	4/28/08	SW8260_25	<2	<1	<2	<1	<1
LZ-13	11/13/06	SW8260_25	<1	<1	<2	<1	<1

Notes: CDPHE - Colorado Department of Public Health and Environment
(B) - Detected in Method Blank (J) - Result is an estimated value.
ug/L - micrograms per Liter (Dup) - Duplicate sample

MCLs - Maximum Contaminant Levels
(R) - Result is a rejected value.
< - below the Reporting Limit



TABLE 1
LABORATORY ANALYTICAL RESULTS - VOLATILE ORGANIC COMPOUNDS
LOWRY OU2 LANDFILL SITE
FORMER LOWRY AIR FORCE BASE
DENVER, COLORADO

Sampling Location / Well ID	Sample Date	Analytical Method	Volatile Organic Compounds (ug/L)				
			Vinyl acetate	Vinyl chloride	Total xylenes	Xylenes, m and p	Xylenes, o
LZ-13	2/8/07	SW8260_25	<2	<1	<2	<1	<1
LZ-13	4/19/07	SW8260_25	<2	<1	<2	<1	<1
LZ-13	7/23/07	SW8260_25	<2	<1	<2	<1	<1
LZ-13	10/30/07	SW8260_25	<2	<1	<2	<1	<1
LZ-13	1/30/08	SW8260_25	<2	<1	<2	<1	<1
LZ-13	4/28/08	SW8260_25	<2	<1	<2	<1	<1
Surface Water							
SW-1	11/21/06	SW8260_25	<1	<1	<2	<1	<1
SW-1	2/8/07	SW8260_25	<2	<1	<2	<1	<1
SW-1 (Dup)	2/8/07	SW8260_25	<2	<1	<2	<1	<1
SW-1	4/20/07	SW8260_25	<2	<1	<2	<1	<1
SW-1 (Dup)	4/20/07	SW8260_25	<2	<1	<2	<1	<1
SW-1	7/24/07	SW8260_25	<2	<1	<2	<1	<1
SW-1 (Dup)	7/24/07	SW8260_25	<2	<1	<2	<1	<1
SW-1	10/31/07	SW8260_25	<2	<1	<2	<1	<1
SW-1	4/28/08	SW8260_25	<2	<1	<2	<1	<1
SW-2	11/21/06	SW8260_25	<1	<1	<2	<1	<1
SW-2 (Dup)	11/21/06	SW8260_25	<1	<1	<2	<1	<1
SW-2	2/8/07	SW8260_25	<2	<1	<2	<1	<1
SW-2	4/20/07	SW8260_25	<2	<1	<2	<1	<1
SW-2	7/24/07	SW8260_25	<2	<1	<2	<1	<1
SW-2	10/31/07	SW8260_25	<2	<1	<2	<1	<1
SW-2	4/29/08	SW8260_25	<2	<1	<2	<1	<1
SW-2 (Dup)	4/29/08	SW8260_25	<2	<1	<2	<1	<1
SW-3	11/21/06	SW8260_25	<1	<1	<2	<1	<1
SW-3	2/8/07	SW8260_25	<2	<1	<2	<1	<1
SW-3	4/20/07	SW8260_25	<2	<1	<2	<1	<1
SW-3	7/24/07	SW8260_25	<2	<1	<2	<1	<1
SW-3	10/31/07	SW8260_25	<2	<1	<2	<1	<1
SW-3 (Dup)	10/31/07	SW8260_25	<2	<1	<2	<1	<1
SW-3	4/28/08	SW8260_25	<2	<1	<2	<1	<1
CDPHE Standards (March 2005):			--	2	10000	--	--
Federal Drinking Water Standards (MCLs):			--	--	--	--	--

Notes: CDPHE - Colorado Department of Public Health and Environment
(B) - Detected in Method Blank (J) - Result is an estimated value. MCLs - Maximum Contaminant Levels
ug/L - micrograms per Liter (Dup) - Duplicate sample (R) - Result is a rejected value.
< - below the Reporting Limit



**TABLE 2
LABORATORY ANALYTICAL RESULTS - TOTAL METALS
LOWRY OU2 LANDFILL SITE
FORMER LOWRY AIR FORCE BASE
DENVER, COLORADO**

Sampling Location / Well ID	Sample Date	Analytical Method	Total Metals (mg/L)																			
			Antimony	Arsenic	Barium	Beryllium	Cadmium	Calcium	Chromium	Cobalt	Copper	Lead	Magnesium	Nickel	Potassium	Selenium	Silver	Sodium	Thallium	Vanadium	Zinc	
Upgradient																						
BG-5	11/13/06	SW6010	<0.02	<0.01	0.21	<0.005	<0.005	170	<0.01	0.012	<0.01	<0.003	44	0.027	8.1	<0.005	<0.01	81	<0.01	0.01	<0.02	
BG-5	2/7/07	SW6010	<0.02	<0.01	0.13	<0.005	<0.005	150	<0.01	<0.01	<0.01	<0.003	36	<0.02	7.2	<0.005	<0.01	130	<0.01	<0.01	<0.02	
BG-5	4/19/07	SW6010	<0.02	<0.01	0.23	<0.005	<0.005	160	<0.01	0.016	0.012	<0.003	36	0.034	5.2	<0.005	<0.01	79	<0.01	0.012	<0.02	
BG-5	7/23/07	SW6010	<0.02	<0.01	0.11	<0.005	<0.005	160	<0.01	<0.01	<0.01	<0.003	39	<0.02	5.5	<0.005	<0.01	77	<0.01	<0.01	<0.02	
BG-5	10/30/07	SW6010	<0.02	<0.01	0.13	<0.005	<0.005	170	<0.01	<0.01	<0.01	<0.003	39	<0.02	6.9	<0.005	<0.01	80	<0.01	<0.01	<0.02	
BG-5 (Dup)	10/30/07	SW6010	<0.02	<0.01	0.25	<0.005	<0.005	160	<0.01	0.011	<0.01	<0.003	34	0.025	4.7	<0.005	<0.01	72	<0.01	<0.01	<0.02	
BG-5	1/31/08	SW6010	<0.02	<0.01	0.2	<0.005	<0.005	170	<0.01	<0.01	<0.01	<0.003	42	0.023	7.8	<0.005	<0.01	88	<0.01	<0.01	<0.02	
BG-5	5/1/08	SW6010	<0.02	<0.01	0.15	<0.005	<0.005	170	<0.01	<0.01	<0.01	<0.003	44	<0.02	7.6	<0.005	<0.01	82	<0.01	<0.01	<0.02	
BG-6	11/13/06	SW6010	<0.02	<0.01	<0.1	<0.005	<0.005	58	<0.01	<0.01	<0.01	<0.003	9.9	<0.02	1.4	<0.005	<0.01	66	<0.01	<0.01	<0.02	
BG-6	2/7/07	SW6010	<0.02	<0.01	<0.1	<0.005	<0.005	58	<0.01	<0.01	<0.01	<0.003	10	<0.02	1.5	<0.005	<0.01	67	<0.01	<0.01	<0.02	
BG-6 (Dup)	2/7/07	SW6010	<0.02	<0.01	<0.1	<0.005	<0.005	58	<0.01	<0.01	<0.01	<0.003	10	<0.02	1.5	<0.005	<0.01	66	<0.01	<0.01	<0.02	
BG-6	4/20/07	SW6010	<0.02	<0.01	<0.1	<0.005	<0.005	56	<0.01	<0.01	<0.01	<0.003	9.7	<0.02	1.3	<0.005	<0.01	67	<0.01	<0.01	<0.02	
BG-6	7/23/07	SW6010	<0.02	<0.01	<0.1	<0.005	<0.005	57	<0.01	<0.01	<0.01	<0.003	10	<0.02	1.2	<0.005	<0.01	65	<0.01	<0.01	<0.02	
BG-6	10/30/07	SW6010	<0.02	<0.01	<0.1	<0.005	<0.005	54	<0.01	<0.01	<0.01	<0.003	9.4	<0.02	1.2	<0.005	<0.01	67	<0.01	<0.01	<0.02	
BG-6	1/30/08	SW6010	<0.02	<0.01	<0.1	<0.005	<0.005	57	<0.01	<0.01	<0.01	<0.003	10	<0.02	1.5	<0.005	<0.01	68	<0.01	<0.01	<0.02	
BG-6	4/28/08	SW6010	<0.02	<0.01	<0.1	<0.005	<0.005	54	<0.01	<0.01	<0.01	<0.003	9.8	<0.02	1.3	<0.005	<0.01	65	<0.01	<0.01	<0.02	
LFPOC09	11/13/06	SW6010	<0.02	<0.01	<0.1	<0.005	<0.005	94	<0.01	<0.01	<0.01	<0.003	14	<0.02	1.6	<0.005	<0.01	99	<0.01	<0.01	<0.02	
LFPOC09	2/8/07	SW6010	<0.02	<0.01	<0.1	<0.005	<0.005	93	<0.01	<0.01	<0.01	<0.003	14	<0.02	1.5	<0.005	<0.01	100	<0.01	<0.01	0.044	
LFPOC09	4/19/07	SW6010	<0.02	<0.01	<0.1	<0.005	<0.005	88	<0.01	<0.01	<0.01	<0.003	13	<0.02	1.3	<0.005	<0.01	99	<0.01	<0.01	<0.02	
LFPOC09	7/23/07	SW6010	<0.02	<0.01	<0.1	<0.005	<0.005	90	<0.01	<0.01	<0.01	<0.003	14	<0.02	1.4	<0.005	<0.01	97	<0.01	<0.01	<0.02	
LFPOC09	10/31/07	SW6010	<0.02	<0.01	<0.1	<0.005	<0.005	90	<0.01	<0.01	<0.01	<0.003	14	<0.02	1.5	<0.005	<0.01	100	<0.01	<0.01	<0.02	
LFPOC09	1/30/08	SW6010	<0.02	<0.01	<0.1	<0.005	<0.005	75	<0.01	<0.01	<0.01	<0.003	14	<0.02	1.9	<0.005	<0.01	100	<0.01	<0.01	<0.02	
LFPOC09	4/28/08	SW6010	<0.02	<0.01	<0.1	<0.005	<0.005	87	<0.01	<0.01	<0.01	<0.003	15	<0.02	1.6	<0.005	<0.01	97	<0.01	<0.01	<0.02	
Downgradient																						
LFPOC07	11/13/06	SW6010	<0.02	<0.01	<0.1	<0.005	<0.005	65	<0.01	<0.01	<0.01	<0.003	12	<0.02	1.9	<0.005	<0.01	110	<0.01	<0.01	<0.02	
LFPOC07	2/8/07	SW6010	<0.02	<0.01	<0.1	<0.005	<0.005	67	<0.01	<0.01	<0.01	<0.003	12	<0.02	1.5	<0.005	<0.01	110	<0.01	<0.01	<0.02	
LFPOC07	4/19/07	SW6010	<0.02	<0.01	<0.1	<0.005	<0.005	64	<0.01	<0.01	<0.01	<0.003	11	<0.02	1.4	<0.005	<0.01	110	<0.01	<0.01	<0.02	
LFPOC07	7/23/07	SW6010	<0.02	<0.01	<0.1	<0.005	<0.005	65	<0.01	<0.01	<0.01	<0.003	12	<0.02	1.5	<0.005	<0.01	110	<0.01	<0.01	<0.02	
LFPOC07	12/19/07	SW6010	<0.02	<0.01	<0.1	<0.005	<0.005	62	<0.01	<0.01	<0.01	<0.003	12	<0.02	1.7	<0.005	<0.01	110	<0.01	<0.01	<0.02	
LFPOC07	1/30/08	SW6010	<0.02	<0.01	<0.1	<0.005	<0.005	65	<0.01	<0.01	<0.01	<0.003	12	<0.02	1.6	<0.005	<0.01	110	<0.01	<0.01	<0.02	
LFPOC07	4/28/08	SW6010	<0.02	<0.01	<0.1	<0.005	<0.005	60	<0.01	<0.01	<0.01	<0.003	11	<0.02	1.4	<0.005	<0.01	100	<0.01	<0.01	<0.02	
LFPOC08	11/13/06	SW6010	<0.02	<0.01	<0.1	<0.005	<0.005	120	<0.01	<0.01	<0.01	<0.003	18	<0.02	1.6	<0.005	<0.01	110	<0.01	<0.01	<0.02	
LFPOC08	2/7/07	SW6010	<0.02	<0.01	<0.1	<0.005	<0.005	120	<0.01	<0.01	<0.01	<0.003	18	<0.02	1.4	<0.005	<0.01	110	<0.01	<0.01	<0.02	
LFPOC08	4/19/07	SW6010	<0.02	<0.01	<0.1	<0.005	<0.005	120	<0.01	<0.01	<0.01	<0.003	18	<0.02	1.3	<0.005	<0.01	110	<0.01	<0.01	<0.02	
LFPOC08	7/23/07	SW6010	<0.02	<0.01	<0.1	<0.005	<0.005	120	<0.01	<0.01	<0.01	<0.003	18	<0.02	1.4	<0.005	<0.01	110	<0.01	<0.01	<0.02	
LFPOC08	10/30/07	SW6010	<0.02	<0.01	<0.1	<0.005	<0.005	120	<0.01	<0.01	<0.01	<0.003	18	<0.02	1.5	<0.005	<0.01	110	<0.01	<0.01	<0.02	
LFPOC08	1/30/08	SW6010	<0.02	<0.01	<0.1	<0.005	<0.005	130	<0.01	<0.01	<0.01	<0.003	19	<0.02	1.5	<0.005	<0.01	110	<0.01	<0.01	<0.02	
LFPOC08	4/28/08	SW6010	<0.02	<0.01	<0.1	<0.005	<0.005	120	<0.01	<0.01	<0.01	<0.003	18	<0.02	1.4	<0.005	<0.01	100	<0.01	<0.01	<0.02	
LFPOC08 (Dup)	4/28/08	SW6010	<0.02	<0.01	<0.1	<0.005	<0.005	120	<0.01	<0.01	<0.01	<0.003	18	<0.02	1.4	<0.005	<0.01	100	<0.01	<0.01	<0.02	
LFPOC10	11/13/06	SW6010	<0.02	<0.01	<0.1	<0.005	<0.005	98	<0.01	<0.01	<0.01	<0.003	15	<0.02	1.5	<0.005	<0.01	99	<0.01	<0.01	<0.02	

Notes: CDPHE - Colorado Department of Public Health and Environment MCLs - Maximum Contaminant Levels
 mg/L - milligrams per Liter (Dup) - Duplicate sample < - below the Reporting Limit (B) - Detected in Method Blank (J) - Result is an estimated value. (R) - Result is a rejected value.



TABLE 2
LABORATORY ANALYTICAL RESULTS - TOTAL METALS
LOWRY OU2 LANDFILL SITE
FORMER LOWRY AIR FORCE BASE
DENVER, COLORADO

Sampling Location / Well ID	Sample Date	Analytical Method	Total Metals (mg/L)																		
			Antimony	Arsenic	Barium	Beryllium	Cadmium	Calcium	Chromium	Cobalt	Copper	Lead	Magnesium	Nickel	Potassium	Selenium	Silver	Sodium	Thallium	Vanadium	Zinc
LFPOC10	2/7/07	SW6010	<0.02	<0.01	<0.1	<0.005	<0.005	100	<0.01	<0.01	<0.01	<0.003	16	<0.02	1.3	<0.005	<0.01	100	<0.01	<0.01	<0.02
LFPOC10	4/19/07	SW6010	<0.02	<0.01	<0.1	<0.005	<0.005	100	<0.01	<0.01	<0.01	<0.003	16	<0.02	1.3	<0.005	<0.01	99	<0.01	<0.01	<0.02
LFPOC10	7/23/07	SW6010	<0.02	<0.01	<0.1	<0.005	<0.005	100	<0.01	<0.01	<0.01	<0.003	17	<0.02	1.3	<0.005	<0.01	98	<0.01	<0.01	<0.02
LFPOC10	10/30/07	SW6010	<0.02	<0.01	<0.1	<0.005	<0.005	99	<0.01	<0.01	<0.01	<0.003	15	<0.02	1.3	<0.005	<0.01	98	<0.01	<0.01	<0.02
LFPOC10	1/30/08	SW6010	<0.02	<0.01	<0.1	<0.005	<0.005	100	<0.01	<0.01	<0.01	<0.003	16	<0.02	1.3	<0.005	<0.01	97	<0.01	<0.01	<0.02
LFPOC10 (Dup)	1/30/08	SW6010	<0.02	<0.01	<0.1	<0.005	<0.005	100	<0.01	<0.01	<0.01	<0.003	16	<0.02	1.3	<0.005	<0.01	97	<0.01	<0.01	<0.02
LFPOC10	5/1/08	SW6010	<0.02	<0.01	<0.1	<0.005	<0.005	97	<0.01	<0.01	<0.01	<0.003	16	<0.02	1.3	<0.005	<0.01	98	<0.01	<0.01	<0.02
LFPOC11	11/13/06	SW6010	<0.02	<0.01	<0.1	<0.005	<0.005	120	<0.01	<0.01	<0.01	<0.003	25	<0.02	3.9	<0.005	<0.01	140	<0.01	<0.01	<0.02
LFPOC11	2/7/07	SW6010	<0.02	<0.01	<0.1	<0.005	<0.005	120	<0.01	<0.01	<0.01	<0.003	25	<0.02	3.4	<0.005	<0.01	140	<0.01	<0.01	<0.02
LFPOC11	4/19/07	SW6010	<0.02	<0.01	<0.1	<0.005	<0.005	120	<0.01	<0.01	<0.01	<0.003	26	<0.02	3.4	<0.005	<0.01	140	<0.01	<0.01	<0.02
LFPOC11	7/23/07	SW6010	<0.02	<0.01	<0.1	<0.005	<0.005	120	<0.01	<0.01	<0.01	<0.003	26	<0.02	3.4	<0.005	<0.01	140	<0.01	<0.01	<0.02
LFPOC11	10/30/07	SW6010	<0.02	<0.01	<0.1	<0.005	<0.005	120	<0.01	<0.01	<0.01	<0.003	27	<0.02	3.4	<0.005	<0.01	140	<0.01	<0.01	<0.02
LFPOC11	1/30/08	SW6010	<0.02	<0.01	<0.1	<0.005	<0.005	120	<0.01	<0.01	<0.01	<0.003	24	<0.02	3.6	<0.005	<0.01	140	<0.01	<0.01	<0.02
LFPOC11	4/28/08	SW6010	<0.02	<0.01	<0.1	<0.005	<0.005	110	<0.01	<0.01	<0.01	<0.003	26	<0.02	3.6	<0.005	<0.01	140	0.013	<0.01	<0.02
LFPOC12	11/13/06	SW6010	<0.02	<0.01	<0.1	<0.005	<0.005	100	<0.01	<0.01	<0.01	<0.003	25	<0.02	3.4	<0.005	<0.01	130	<0.01	<0.01	<0.02
LFPOC12	2/8/07	SW6010	<0.02	<0.01	<0.1	<0.005	<0.005	100	<0.01	<0.01	<0.01	<0.003	27	<0.02	4.0	<0.005	<0.01	170	<0.01	<0.01	<0.02
LFPOC12	4/19/07	SW6010	<0.02	<0.01	<0.1	<0.005	<0.005	98	<0.01	<0.01	<0.01	<0.003	27	<0.02	3.6	<0.005	<0.01	160	<0.01	<0.01	0.027
LFPOC12 (Dup)	4/19/07	SW6010	<0.02	<0.01	<0.1	<0.005	<0.005	99	<0.01	<0.01	<0.01	<0.003	26	<0.02	3.4	<0.005	<0.01	160	<0.01	<0.01	<0.02
LFPOC12	7/23/07	SW6010	<0.02	<0.01	<0.1	<0.005	<0.005	97	<0.01	<0.01	<0.01	<0.003	26	<0.02	3.4	<0.005	<0.01	160	<0.01	<0.01	<0.02
LFPOC12 (Dup)	7/23/07	SW6010	<0.02	<0.01	<0.1	<0.005	<0.005	97	<0.01	<0.01	<0.01	<0.003	28	<0.02	3.4	<0.005	<0.01	150	<0.01	<0.01	<0.02
LFPOC12	10/30/07	SW6010	<0.02	<0.01	<0.1	<0.005	<0.005	96	<0.01	<0.01	<0.01	<0.003	27	<0.02	3.3	<0.005	<0.01	150	<0.01	<0.01	<0.02
LFPOC12	1/30/08	SW6010	<0.02	<0.01	<0.1	<0.005	<0.005	99	<0.01	<0.01	<0.01	<0.003	26	<0.02	3.5	<0.005	<0.01	160	<0.01	<0.01	<0.02
LFPOC12	4/28/08	SW6010	<0.02	<0.01	<0.1	<0.005	<0.005	91	<0.01	<0.01	<0.01	<0.003	27	<0.02	3.6	<0.005	<0.01	150	<0.01	<0.01	<0.02
LFPOC13	11/13/06	SW6010	<0.02	<0.01	0.15	<0.005	<0.005	120	0.01	<0.01	<0.01	0.0085	22	<0.02	5.2	<0.005	<0.01	100	<0.01	0.027	0.033
LFPOC13	2/7/07	SW6010	<0.02	<0.01	<0.1	<0.005	<0.005	100	<0.01	<0.01	<0.01	<0.003	18	<0.02	2.5	<0.005	<0.01	110	<0.01	<0.01	<0.02
LFPOC13	4/20/07	SW6010	<0.02	<0.01	<0.1	<0.005	<0.005	110	<0.01	<0.01	<0.01	<0.003	19	<0.02	2.3	<0.005	<0.01	95	<0.01	<0.01	<0.02
LFPOC13	9/27/07	SW6010	<0.02	<0.01	<0.1	<0.005	<0.005	120	<0.01	<0.01	<0.01	<0.003	19	<0.02	2.6	<0.005	<0.01	95	<0.01	<0.01	<0.02
LFPOC13	10/31/07	SW6010	<0.02	<0.01	<0.1	<0.005	<0.005	120	<0.01	<0.01	<0.01	<0.003	19	<0.02	2.2	<0.005	<0.01	94	<0.01	<0.01	<0.02
LFPOC13	1/31/08	SW6010	<0.02	<0.01	<0.1	<0.005	<0.005	100	<0.01	<0.01	<0.01	<0.003	18	<0.02	2.1	<0.005	<0.01	110	<0.01	<0.01	<0.02
LFPOC13	4/28/08	SW6010	<0.02	<0.01	<0.1	<0.005	<0.005	88	<0.01	<0.01	<0.01	<0.003	18	<0.02	2	<0.005	<0.01	100	<0.01	<0.01	<0.02
LZ-13	11/13/06	SW6010	<0.02	<0.01	<0.1	<0.005	<0.005	66	<0.01	<0.01	<0.01	<0.003	21	<0.02	2.2	<0.005	<0.01	100	<0.01	<0.01	<0.02
LZ-13	2/8/07	SW6010	<0.02	<0.01	<0.1	<0.005	<0.005	67	<0.01	<0.01	<0.01	<0.003	22	<0.02	1.8	<0.005	<0.01	100	<0.01	<0.01	<0.02
LZ-13	4/19/07	SW6010	<0.02	<0.01	<0.1	<0.005	<0.005	93	<0.01	<0.01	<0.01	<0.003	32	<0.02	2.3	<0.005	<0.01	120	<0.01	<0.01	0.063
LZ-13	7/23/07	SW6010	<0.02	<0.01	<0.1	<0.005	<0.005	88	<0.01	<0.01	<0.01	<0.003	29	<0.02	2.7	<0.005	<0.01	120	<0.01	<0.01	<0.02
LZ-13	10/30/07	SW6010	<0.02	<0.01	<0.1	<0.005	<0.005	90	<0.01	<0.01	<0.01	<0.003	29	<0.02	2.5	0.006	<0.01	120	<0.01	<0.01	<0.02
LZ-13	1/30/08	SW6010	<0.02	<0.01	<0.1	<0.005	<0.005	86	<0.01	<0.01	<0.01	<0.003	29	<0.02	2.1	<0.005	<0.01	110	<0.01	<0.01	<0.02
LZ-13	4/28/08	SW6010	<0.02	<0.01	<0.1	<0.005	<0.005	80	<0.01	<0.01	<0.01	<0.003	28	<0.02	2.2	<0.005	<0.01	110	<0.01	<0.01	<0.02
Surface Water																					
SW-1	11/21/06	SW6010	<0.02	<0.01	0.14	<0.005	<0.005	110	<0.01	<0.01	<0.01	<0.003	25	<0.02	3.6	<0.005	<0.01	61	<0.01	<0.01	<0.02
SW-1	2/8/07	SW6010	<0.02	<0.01	0.11	<0.005	<0.005	75	<0.01	<0.01	<0.01	0.0045	19	<0.02	6.6	<0.005	<0.01	130	<0.01	<0.01	0.083
SW-1 (Dup)	2/8/07	SW6010	<0.02	<0.01	0.1	<0.005	<0.005	73	<0.01	<0.01	0.01	0.0064	19	<0.02	6.8	<0.005	<0.01	130	<0.01	<0.01	0.08
SW-1	4/20/07	SW6010	<0.02	<0.01	0.12	<0.005	<0.005	98	<0.01	<0.01	<0.01	<0.003	30	<0.02	4.0	<0.005	<0.01	71	<0.01	<0.01	<0.02

Notes: CDPHE - Colorado Department of Public Health and Environment
mg/L - milligrams per Liter (Dup) - Duplicate sample

MCLs - Maximum Contaminant Levels

< - below the Reporting Limit

(B) - Detected in Method Blank

(J) - Result is an estimated value.

(R) - Result is a rejected value.

rMetals



**TABLE 2
LABORATORY ANALYTICAL RESULTS - TOTAL METALS
LOWRY OU2 LANDFILL SITE
FORMER LOWRY AIR FORCE BASE
DENVER, COLORADO**

Sampling Location / Well ID	Sample Date	Analytical Method	Total Metals (mg/L)																		
			Antimony	Arsenic	Barium	Beryllium	Cadmium	Calcium	Chromium	Cobalt	Copper	Lead	Magnesium	Nickel	Potassium	Selenium	Silver	Sodium	Thallium	Vanadium	Zinc
SW-1 (Dup)	4/20/07	SW6010	<0.02	<0.01	0.12	<0.005	<0.005	99	<0.01	<0.01	<0.01	<0.003	30	<0.02	4.0	<0.005	<0.01	71	<0.01	<0.01	<0.02
SW-1	7/24/07	SW6010	<0.02	<0.01	0.14	<0.005	<0.005	110	<0.01	<0.01	<0.01	<0.003	26	<0.02	3.9	<0.005	<0.01	67	<0.01	<0.01	<0.02
SW-1 (Dup)	7/24/07	SW6010	<0.02	<0.01	0.14	<0.005	<0.005	110	<0.01	<0.01	<0.01	<0.003	26	<0.02	3.9	<0.005	<0.01	66	<0.01	<0.01	<0.02
SW-1	10/31/07	SW6010	<0.02	<0.01	0.14	<0.005	<0.005	110	<0.01	<0.01	<0.01	<0.003	25	<0.02	3.6	<0.005	<0.01	70	<0.01	<0.01	<0.02
SW-1	4/28/08	SW6010	<0.02	<0.01	0.15	<0.005	<0.005	110	<0.01	<0.01	<0.01	<0.003	29	<0.02	3.4	<0.005	<0.01	74	<0.01	<0.01	<0.02
SW-2	11/21/06	SW6010	<0.02	<0.01	0.11	<0.005	<0.005	130	<0.01	<0.01	<0.01	<0.003	30	<0.02	5.8	<0.005	<0.01	99	<0.01	<0.01	<0.02
SW-2 (Dup)	11/21/06	SW6010	<0.02	<0.01	0.11	<0.005	<0.005	130	<0.01	<0.01	<0.01	<0.003	30	<0.02	5.8	<0.005	<0.01	98	<0.01	<0.01	<0.02
SW-2	2/8/07	SW6010	<0.02	<0.01	<0.1	<0.005	<0.005	61	<0.01	<0.01	<0.01	<0.003	22	<0.02	8.8	<0.005	<0.01	190	<0.01	<0.01	0.043
SW-2	4/20/07	SW6010	<0.02	<0.01	<0.1	<0.005	<0.005	100	<0.01	<0.01	<0.01	<0.003	30	<0.02	5.0	<0.005	<0.01	95	<0.01	<0.01	<0.02
SW-2	7/24/07	SW6010	<0.02	<0.01	<0.1	<0.005	<0.005	81	<0.01	<0.01	<0.01	<0.003	27	<0.02	5.8	<0.005	<0.01	92	<0.01	<0.01	<0.02
SW-2	10/31/07	SW6010	<0.02	<0.01	<0.1	<0.005	<0.005	110	<0.01	<0.01	<0.01	<0.003	26	<0.02	5.4	<0.005	<0.01	85	<0.01	<0.01	<0.02
SW-2	4/29/08	SW6010	<0.02	<0.01	<0.1	<0.005	<0.005	90	<0.01	<0.01	<0.01	<0.003	28	<0.02	5.2	<0.005	<0.01	120	<0.01	<0.01	<0.02
SW-2 (Dup)	4/29/08	SW6010	<0.02	<0.01	<0.1	<0.005	<0.005	89	<0.01	<0.01	<0.01	<0.003	28	<0.02	5.1	<0.005	<0.01	120	<0.01	<0.01	<0.02
SW-3	11/21/06	SW6010	<0.02	<0.01	0.11	<0.005	<0.005	120	<0.01	<0.01	<0.01	<0.003	30	<0.02	5.7	<0.005	<0.01	99	<0.01	<0.01	<0.02
SW-3	2/8/07	SW6010	<0.02	<0.01	<0.1	<0.005	<0.005	62	<0.01	<0.01	<0.01	<0.003	22	<0.02	8.6	<0.005	<0.01	180	<0.01	<0.01	0.04
SW-3	4/20/07	SW6010	<0.02	<0.01	<0.1	<0.005	<0.005	110	<0.01	<0.01	<0.01	<0.003	30	<0.02	5.0	<0.005	<0.01	95	<0.01	<0.01	<0.02
SW-3	7/24/07	SW6010	<0.02	<0.01	<0.1	<0.005	<0.005	80	<0.01	<0.01	<0.01	<0.003	27	<0.02	5.8	<0.005	<0.01	92	<0.01	<0.01	<0.02
SW-3	10/31/07	SW6010	<0.02	<0.01	<0.1	<0.005	<0.005	110	<0.01	<0.01	<0.01	<0.003	26	<0.02	4.7	<0.005	<0.01	85	<0.01	<0.01	<0.02
SW-3 (Dup)	10/31/07	SW6010	<0.02	<0.01	<0.1	<0.005	<0.005	110	<0.01	<0.01	<0.01	<0.003	26	<0.02	4.7	<0.005	<0.01	85	<0.01	<0.01	<0.02
SW-3	4/28/08	SW6010	<0.02	<0.01	<0.1	<0.005	<0.005	88	<0.01	<0.01	<0.01	<0.003	28	<0.02	5	<0.005	<0.01	120	<0.01	<0.01	<0.02
CDPHE Standards (March 2005):			--	--	--	--	--	--	--	--	--	--	--	--	--	--	--	--	--	--	--
Federal Drinking Water Standards (MCLs):			0.006	0.010	2	0.004	0.005	--	0.1	--	1.3	0.015	--	--	--	--	--	--	--	--	--
Federal Secondary Drinking Water Standards:			--	--	--	--	--	--	--	--	--	--	--	--	0.05	--	--	0.002	--	--	5
																0.10					

Notes: CDPHE - Colorado Department of Public Health and Environment MCLs - Maximum Contaminant Levels
 mg/L - milligrams per Liter (Dup) - Duplicate sample < - below the Reporting Limit (B) - Detected in Method Blank (J) - Result is an estimated value. (R) - Result is a rejected value.

rMetals



TABLE 3
LABORATORY ANALYTICAL RESULTS - ANIONS AND TOTAL ORGANIC CARBON, AND FIELD PARAMETERS
LOWRY OU2 LANDFILL SITE
FORMER LOWRY AIR FORCE BASE
DENVER, COLORADO

Sampling Location / Well ID	Sample Date	ANIONS						FIELD PARAMETERS			Total Organic Carbon (mg/L)
		Carbonate as CaCO3 (mg/L)	Bicarbonate as CaCO3 (mg/L)	Chloride (mg/L)	Sulfate (mg/L)	Nitrite as N (mg/L)	Nitrate as N (mg/L)	pH, Field (su)	Conductivity, Field (u-S)	Temperature, Field (Deg C)	
LFPOC08	4/28/08	<20	390	100	94	<0.1	0.43	7.74	1132	11.18	2.3
LFPOC08 (Dup)	4/28/08	<20	400	98	95	<0.1	0.42				2.4
LFPOC10	11/13/06	<10	340	85	76	<0.1	0.67	7.08	963	13.51	1.6
LFPOC10	2/7/07	<20	350	87	73	0.23	<0.2	6.97	968	13.28	1.5
LFPOC10	4/19/07	<50	360	92	74	<0.1 (J)	<0.2	7.85	1056	13.78	1.4
LFPOC10	7/23/07	<50	360	87	70	<0.1	0.25	6.79	1060	15.87	1.3
LFPOC10	10/30/07	<50	350	91	76	<0.1	<0.2	7.76	1122	15.36	2.1
LFPOC10	1/30/08	<50	360	89	76	<0.1	<0.2	7.44	998	11.27	1.8
LFPOC10 (Dup)	1/30/08	<50	360	92	76	<0.1	<0.2				1.9
LFPOC10	5/1/08	<20	370	89	74	<0.1	<0.2	7.34	1037	11.2	1.7
LFPOC11	11/13/06	<20	490	110	84	<0.2	<0.4	6.90	1252	13.73	1.8
LFPOC11	2/7/07	<20	490	110	77	0.28	<0.2	7.55	1248	13.44	1.7
LFPOC11	4/19/07	<50	490	120	80	<0.1 (J)	<0.2 (J)	7.75	1356	13.17	1.5
LFPOC11	7/23/07	<50	490	110	82	<0.1	<0.2	6.68	1371	14.49	1.6
LFPOC11	10/30/07	<50	490	120	87	<0.1	<0.2	6.85	1453	15.27	2.1
LFPOC11	1/30/08	<50	490	120	85	<0.1	<0.2	7.14	1334	11.43	1.9
LFPOC11	4/28/08	<20	490	110	78	<0.2	<0.4	7.59	1294	12.82	2.1
LFPOC12	11/13/06	<20	430	89	180	<0.2	<0.4	6.97	1289	13.85	1.8
LFPOC12	2/8/07	<50	430	92	180	<0.2	<0.4	7.10	1260	12.73	1.9
LFPOC12	4/19/07	<50	420	95	170	<0.1 (J)	<0.2	7.12	1346	12.43	1.7
LFPOC12 (Dup)	4/19/07	<50	420	96	170	<0.1 (J)	<0.2 (J)	7.12	1346	12.43	1.5
LFPOC12	7/23/07	<50	430	89	160	<0.1	<0.2	7.63	1377	13.99	1.6
LFPOC12 (Dup)	7/23/07	<50	430	89	160	<0.1	<0.2	7.63	1377	13.99	1.6
LFPOC12	10/30/07	<50	430	95	170	<0.1	<0.2	7.61	1454	14.97	2.2
LFPOC12	1/30/08	<50	430	90	160	<0.1	<0.2	7.14	1242	11.8	1.8
LFPOC12	4/28/08	<20	430	90	150	<0.1	<0.2	7.6	1271	12.74	2.1
LFPOC13	11/13/06	<20	330	98	120	<0.1	1.4	7.28	1051	15.41	1.6
LFPOC13	2/7/07	<10	330	88	120	0.24	1.7	6.27	1021	13.51	1.3
LFPOC13	4/20/07	<50	320	78	130	<0.1 (J)	3.0	7.84	1056	12.49	1.3
LFPOC13	7/23/07							7.47	1104	13.46	
LFPOC13	7/24/07	<50	320	96	110	<0.1	1.4				2.4
LFPOC13	9/27/07							7.42	1189	16.0	
LFPOC13	10/31/07	<20	330	110	130	<0.1	1.9	7.86	1242	15.59	2.5
LFPOC13	1/31/08	<50	330	100	120	<0.1	1.7	7.51	874	12.66	1.7
LFPOC13	4/28/08	<20	320	69	95	<0.1	1.4	7.89	1026	13.29	1.9
LZ-13	11/13/06	<20	330	63	75	<0.1	1.3	7.29	885	10.44	1.6
LZ-13	2/8/07	<50	330	67	77	<0.1	0.73	7.42	875	4.99	1.4
LZ-13	4/19/07	<50	350	98	190	<0.1 (J)	0.95 (J)	8.67	1250	9.00	2.1
LZ-13	7/23/07	<50	310	92	130	<0.1	15	7.38	1234	15.63	1

Notes: CDPHE - Colorado Department of Public Health and Environment su - standard units Deg C - Degrees Centigrade u-S - microSiemens/cm
mg/L - milligrams per Liter (Dup) - Duplicate sample < - below the Reporting Limit (B) - Detected in Method Blank (J) - Result is an estimated value. (R) - Result is a rejected value.



**TABLE 3
LABORATORY ANALYTICAL RESULTS - ANIONS AND TOTAL ORGANIC CARBON, AND FIELD PARAMETERS
LOWRY OU2 LANDFILL SITE
FORMER LOWRY AIR FORCE BASE
DENVER, COLORADO**

Sampling Location / Well ID	Sample Date	ANIONS						FIELD PARAMETERS			Total Organic Carbon (mg/L)
		Carbonate as CaCO ₃ (mg/L)	Bicarbonate as CaCO ₃ (mg/L)	Chloride (mg/L)	Sulfate (mg/L)	Nitrite as N (mg/L)	Nitrate as N (mg/L)	pH, Field (su)	Conductivity, Field (u-S)	Temperature, Field (Deg C)	
LZ-13	10/30/07	<50	320	92	160	<0.1	13	7.43	1282	14.05	4
LZ-13	1/30/08	<50	330	78	130	<0.1	6.8	7.48	1031	5.7	2.6
LZ-13	4/28/08	<20	320	73	130	<0.1	5.2	7.78	1063	8.38	2.7
Surface Water											
SW-1	11/21/06	<20	290	41	52	<0.1	7.6	8.36	794	14.46	2.3
SW-1	2/8/07	<20	170	260	60	<0.1	4.1	7.75	1113	7.40	5.7
SW-1 (Dup)	2/8/07	<20	160	270	56	<0.1	3.9	7.75	1113	7.4	5.4
SW-1	4/20/07	<20	260	92	100	<0.1 (J)	5.3	8.11	997	11.51	2.5
SW-1 (Dup)	4/20/07	<20	260	94	110	<0.1 (J)	5.4	8.11	997	11.51	2.6
SW-1	7/24/07	<20	260	86	94	<0.1	7.3	8.13	1010	17.49	3.3
SW-1 (Dup)	7/24/07	23	260	85	93	<0.1	7.3	8.13	1010	17.49	3.3
SW-1	10/31/07	<20	280	94	94	<0.1	8.5	8.27	1115	15.29	3.2
SW-1	4/28/08	<20	320	84	77	<0.1	9	8.92	1050	12.38	2.8
SW-2	11/21/06	<20	270	250	490	<0.2	3.7	8.40	946	10.91	5.2
SW-2 (Dup)	11/21/06	<20	270	250	490	<0.2	3.7	8.40	946	10.91	5.2
SW-2	2/8/07	<20	120	370	100	<0.2	1.7	7.86	1430	4.39	6.3
SW-2	4/20/07	<20	210	130	190	<0.1 (J)	3.0	8.31	1155	12.27	6.4
SW-2	7/24/07	<20	190	110	170	<0.1	1.8	7.95	1075	23.52	8.3
SW-2	10/31/07	<20	240	100	190	<0.1	3.5	8.01	1194	11.5	6.6
SW-2	4/29/08	<20	220	150	180	<0.1	1.9	8.81	1143	10.97	8.1
SW-2 (Dup)	4/29/08	<20	220	160	180	<0.1	2				8.4
SW-3	11/21/06	<10	260	250	490	<0.2	3.6	8.46	932	10.55	5.3
SW-3	2/8/07	<20	120	360	99	<0.2	1.7	7.93	1423	3.98	6.5
SW-3	4/20/07	<20	230	130	180	<0.1 (J)	3.0	8.23	1158	11.28	6
SW-3	7/24/07	<20	180	110	170	<0.1	1.7	7.98	1070	23.06	8.3
SW-3	10/31/07	<20	250	100	190	<0.1	3.5	8	1201	10.97	5.3
SW-3 (Dup)	10/31/07	<20	250	100	190	<0.1	3.5				5.3
SW-3	4/28/08	<20	210	160	180	<0.1	2	9.03	1208	12.43	7.4
CDPHE Standards (March 2005):		--	--	--	--	1.0	10	--	--	--	--
CDPHE Secondary Drinking Water Standards (March 2005):		--	--	250	250	--	--	--	--	--	--

Notes: CDPHE - Colorado Department of Public Health and Environment
mg/L - milligrams per Liter (Dup) - Duplicate sample

su - standard units
< - below the Reporting Limit

Deg C - Degrees Centigrade
(B) - Detected in Method Blank

u-S - microSiemens/cm
(J) - Result is an estimated value.

(R) - Result is a rejected value.

rwq



TABLE 4
LABORATORY ANALYTICAL RESULTS
GROSS ALPHA AND GROSS BETA
LOWRY OU2 LANDFILL SITE
FORMER LOWRY AIR FORCE BASE
DENVER, COLORADO

Sampling Location / Well ID	Sample Date	Analytical Method	Gross Alpha (pCi/L)	Gross Beta (pCi/L)
Upgradient				
BG-5	11/13/06	724R9	40.3 +/- 6.8	26.2 +/- 4.6
BG-5	2/7/07	724R9	32.2 +/- 5.7	18.1 +/- 3.6
BG-5	4/19/07	724R9	54.7 +/- 9.4	39.3 +/- 6.8
BG-5	7/23/07	724R9	36.1 +/- 6.3	18.9 +/- 3.9
BG-5	10/30/07	724R10	32.3 +/- 5.8	13.9 +/- 3.2
BG-5 (Dup)	10/30/07	724R10	49.9 +/- 8.6	20.4 +/- 3.9
BG-5	1/31/08	724R10	54.3 +/- 9.2	22.6 +/- 4.1
BG-5	5/1/08	724R10	33.5 +/- 5.9	11.8 +/- 2.7
BG-6	11/13/06	724R9	11.8 +/- 2.9	5.6 +/- 2
BG-6	2/7/07	724R9	11.2 +/- 2.8	4.4 +/- 1.7
BG-6 (Dup)	2/7/07	724R9	11.2 +/- 2.8	5.5 +/- 1.9
BG-6	4/20/07	724R9	9.6 +/- 1.9	6.3 +/- 1.4
BG-6	7/23/07	724R9	12.9 +/- 2.7	4.1 +/- 1.9
BG-6	10/30/07	724R10	9.9 +/- 2.5	3.4 +/- 1.9 (U)
BG-6	1/30/08	724R10	9.7 +/- 1.9	5.2 +/- 1.3
BG-6	4/28/08	724R10	9.3 +/- 1.8	3.9 +/- 1.1
LFPOC09	11/13/06	724R9	35.3 +/- 6.5	12.0 +/- 2.8
LFPOC09	2/8/07	724R9	37.1 +/- 6.7	14.9 +/- 3.1
LFPOC09	4/19/07	724R9	41.7 +/- 7.3 (J)	18.4 +/- 3.5
LFPOC09	7/23/07	724R9	47.9 +/- 8.2	14.1 +/- 3.1
LFPOC09	10/31/07	724R10	36.7 +/- 6.5	12.2 +/- 2.6
LFPOC09	1/30/08	724R10	37.7 +/- 6.4	10.9 +/- 2.3
LFPOC09	4/28/08	724R10	37.3 +/- 6.4	10.9 +/- 2.3
Downgradient				
LFPOC07	11/13/06	724R9	23.0 +/- 4.3	9.2 +/- 2.1
LFPOC07	2/8/07	724R9	21.0 +/- 4.1	7.5 +/- 2.1
LFPOC07	4/19/07	724R9	23.7 +/- 4.4	10.8 +/- 2.3
LFPOC07	7/23/07	724R9	27.8 +/- 4.9	9.8 +/- 2.5
LFPOC07	12/19/07	724R10	23.9 +/- 4.2	9.3 +/- 2.1
LFPOC07	1/30/08	724R10	20 +/- 3.6	4.8 +/- 1.4
LFPOC07	4/28/08	724R10	21.4 +/- 3.9	6.9 +/- 1.7
LFPOC08	11/13/06	724R9	53.6 +/- 9.3	21.0 +/- 4.1
LFPOC08	2/7/07	724R9	49.5 +/- 8.6	15.3 +/- 3.2
LFPOC08	4/19/07	724R9	68 +/- 11	26.2 +/- 4.8
LFPOC08	7/23/07	724R9	60.8 +/- 10	23.2 +/- 4.5

Notes: Results are displayed as the Result +/- 2 s TPU (2 standard deviations - Total Propagated Uncertainty, equivalent to 95% Confidence interval). Results are shown in bold if the result exceeds the standard.
 CDPHE - Colorado Department of Public Health and Environment
 pCi/L - picoCuries per Liter (Dup) - Duplicate sample
 (B) - Detected in Method Blank (J) - Result is an estimated value. (R) - Result is a rejected value.



TABLE 4
LABORATORY ANALYTICAL RESULTS
GROSS ALPHA AND GROSS BETA
LOWRY OU2 LANDFILL SITE
FORMER LOWRY AIR FORCE BASE
DENVER, COLORADO

Sampling Location / Well ID	Sample Date	Analytical Method	Gross Alpha (pCi/L)	Gross Beta (pCi/L)
LFPOC08	10/30/07	724R10	48.8 +/- 8.4	16.3 +/- 3.3
LFPOC08	1/30/08	724R10	64 +/- 11	14.9 +/- 3
LFPOC08	4/28/08	724R10	60.8 +/- 10	14.9 +/- 2.9
LFPOC08 (Dup)	4/28/08	724R10	62.1 +/- 10	18.7 +/- 3.7
LFPOC10	11/13/06	724R9	47.3 +/- 8.3	14.3 +/- 3.1
LFPOC10	2/7/07	724R9	52 +/- 9	22.9 +/- 4.3
LFPOC10	4/19/07	724R9	60.2 +/- 10	28.3 +/- 5
LFPOC10	7/23/07	724R9	80 +/- 13	21.2 +/- 4.1
LFPOC10	10/30/07	724R10	67 +/- 11	18.3 +/- 3.6
LFPOC10	1/30/08	724R10	58.2 +/- 9.7	13.2 +/- 2.7
LFPOC10 (Dup)	1/30/08	724R10	57.6 +/- 9.6	12.3 +/- 2.7
LFPOC10	5/1/08	724R10	53 +/- 9	14.4 +/- 2.9
LFPOC11	11/13/06	724R9	42.1 +/- 7.2	25.0 +/- 4.4
LFPOC11	2/7/07	724R9	51.5 +/- 8.8	19.2 +/- 3.6
LFPOC11	4/19/07	724R9	44.3 +/- 7.9	21.6 +/- 4.1
LFPOC11	7/23/07	724R9	56.2 +/- 9.5	20.1 +/- 4
LFPOC11	10/30/07	724R10	48.7 +/- 8.3	18.5 +/- 3.7
LFPOC11	1/30/08	724R10	53.2 +/- 9.2	11.9 +/- 2.9
LFPOC11	4/28/08	724R10	47.4 +/- 8.1	12.8 +/- 2.8
LFPOC12	11/13/06	724R9	13.4 +/- 2.7	8.4 +/- 2.1
LFPOC12	2/8/07	724R9	9.3 +/- 2.1	7.3 +/- 2.0
LFPOC12	4/19/07	724R9	11.8 +/- 2.7	6.4 +/- 2
LFPOC12 (Dup)	4/19/07	724R9	11.4 +/- 2.5	6.7 +/- 2
LFPOC12	7/23/07	724R9	12.9 +/- 2.7	6 +/- 2.4
LFPOC12 (Dup)	7/23/07	724R9	13.3 +/- 2.8	5.8 +/- 2.5
LFPOC12	10/30/07	724R10	11.9 +/- 2.6	5.8 +/- 2.3
LFPOC12	1/30/08	724R10	13.7 +/- 2.7	4.8 +/- 1.9
LFPOC12	4/28/08	724R10	12.3 +/- 2.6	4.6 +/- 1.9
LFPOC13	11/13/06	724R9	66 +/- 11	40.5 +/- 6.9
LFPOC13	2/7/07	724R9	77 +/- 13	22.5 +/- 4.2
LFPOC13	4/20/07	724R9	51.9 +/- 9	30.9 +/- 5.4
LFPOC13	9/27/07	724R10	70 +/- 12	36 +/- 6.3
LFPOC13	10/31/07	724R10	90 +/- 15	17.2 +/- 3.5
LFPOC13	1/31/08	724R10	65 +/- 11	15.8 +/- 3
LFPOC13	4/28/08	724R10	63 +/- 11	15.4 +/- 3.1
LZ-13	11/13/06	724R9	17.6 +/- 3.4	9.0 +/- 2.1
LZ-13	2/8/07	724R9	20.2 +/- 3.9	7.6 +/- 2

Notes: Results are displayed as the Result +/- 2 s TPU (2 standard deviations - Total Propagated Uncertainty, equivalent to 95% Confidence interval). Results are shown in bold if the result exceeds the standard.
 CDPHE - Colorado Department of Public Health and Environment
 pCi/L - picoCuries per Liter (Dup) - Duplicate sample
 (B) - Detected in Method Blank (J) - Result is an estimated value. (R) - Result is a rejected value.



TABLE 4
LABORATORY ANALYTICAL RESULTS
GROSS ALPHA AND GROSS BETA
LOWRY OU2 LANDFILL SITE
FORMER LOWRY AIR FORCE BASE
DENVER, COLORADO

Sampling Location / Well ID	Sample Date	Analytical Method	Gross Alpha (pCi/L)	Gross Beta (pCi/L)
LZ-13	4/19/07	724R9	35.2 +/- 6.3	13.5 +/- 2.8
LZ-13	7/23/07	724R9	25.1 +/- 4.5	10.6 +/- 2.7
LZ-13	10/30/07	724R10	23.7 +/- 4.5	6.7 +/- 2
LZ-13	1/30/08	724R10	26.2 +/- 4.6	6.4 +/- 1.7
LZ-13	4/28/08	724R10	23.1 +/- 4.3	7.6 +/- 2
Surface Water				
SW-1	11/21/06	724R9	7.4 +/- 2.1	4.3 +/- 2
SW-1	2/8/07	724R9	5.2 +/- 1.5	8.5 +/- 2.2
SW-1 (Dup)	2/8/07	724R9	4.0 +/- 1.3	5.9 +/- 2.3
SW-1	4/20/07	724R9	8.6 +/- 1.9	7.0 +/- 1.9
SW-1 (Dup)	4/20/07	724R9	8.8 +/- 2	6.1 +/- 1.8
SW-1	7/24/07	724R9	5.3 +/- 1.9	7.9 +/- 2.5
SW-1 (Dup)	7/24/07	724R9	7.1 +/- 1.6	5 +/- 1.7
SW-1	10/31/07	724R10	5.3 +/- 1.5	5.1 +/- 1.7
SW-1	4/28/08	724R10	5.8 +/- 1.5	3.8 +/- 1.7
SW-2	11/21/06	724R9	15.3 +/- 3	6.2 +/- 1.9
SW-2 (Dup)	11/21/06	724R9	11.1 +/- 2.4	6.7 +/- 1.9
SW-2	2/8/07	724R9	6.9 +/- 1.8 (J)	9.8 +/- 2.4
SW-2	4/20/07	724R9	12.6 +/- 2.7	8.0 +/- 2.1
SW-2	7/24/07	724R9	8.3 +/- 2.1	8.1 +/- 2.5
SW-2	10/31/07	724R10	9.3 +/- 2.2	6.4 +/- 1.9
SW-2	4/29/08	724R10	12.9 +/- 2.7	6.9 +/- 2
SW-2 (Dup)	4/29/08	724R10	13.8 +/- 2.8	7.2 +/- 2
SW-3	11/21/06	724R9	16.4 +/- 3.2	7.8 +/- 2.3
SW-3	2/8/07	724R9	6.3 +/- 1.6	10.7 +/- 2.5
SW-3	4/20/07	724R9	10.1 +/- 2.3	8.2 +/- 2
SW-3	7/24/07	724R9	7.7 +/- 1.9	7.2 +/- 2.3
SW-3	10/31/07	724R10	14.4 +/- 2.9	6.2 +/- 1.9
SW-3 (Dup)	10/31/07	724R10	10.8 +/- 2.4	5.4 +/- 1.9
SW-3	4/28/08	724R10	12.2 +/- 2.6	5.6 +/- 2
CDPHE Standards (March 2005):			15	--

Notes: Results are displayed as the Result +/- 2 s TPU (2 standard deviations - Total Propagated Uncertainty, equivalent to 95% Confidence interval). Results are shown in bold if the result exceeds the standard.
 CDPHE - Colorado Department of Public Health and Environment
 pCi/L - picoCuries per Liter (Dup) - Duplicate sample
 (B) - Detected in Method Blank (J) - Result is an estimated value. (R) - Result is a rejected value.



TABLE 5
SOIL VAPOR RESULTS
LOWRY OU2 LANDFILL SITE
FORMER LOWRY AIR FORCE BASE
DENVER, COLORADO

Vapor Point ID	Date	Field Measured CH ₄ %	Analytical Results CH ₄ ppm (%)	PID Readings
GP-01	11/20/2006	0	0	0
	1/10/2007	0	0	0
	2/9/2007	0	0	0
	3/9/2007	0	0	0
	4/21/2007	0	0	0
	5/25/2007	0	0	0
	6/26/2007	0	0	0
	7/23/2007	0	0	0
	8/26/2007	0	0	0
	9/24/2007	0	0	0
	10/23/2007	0	0	0
	1/28/2008	0	0	0
	4/29/2008	0.2	NA	0
	GP-02	11/20/2006	0	0
1/10/2007		0	0	0
2/9/2007		0	0	0
3/9/2007		0	0	0
4/21/2007		0	0	0
5/25/2007		0	0	0
6/26/2007		0	0	0
7/23/2007		0	0	0
8/26/2007		0	0	0
9/24/2007		0	0	0
10/23/2007		0	0	0
1/28/2008		0	0	0
4/29/2008		0	0	0
GP-03		11/20/2006	0	0
	1/10/2007	0	0	0
	2/9/2007	0	0	0
	3/9/2007	0	0	0
	4/21/2007	0	0	0
	5/25/2007	0	0	0
	6/26/2007	0	0	0
	7/23/2007	0	0	0
	8/26/2007	0	0	0
	9/24/2007	0	0	0
	10/23/2007	0	0	0
	1/28/2008	0	0	0
	4/29/2008	0.15	NA	0
	GP-04	11/20/2006	0	0
1/10/2007		0	0	0
2/9/2007		0	0	0
3/9/2007		0	0	0
4/21/2007		0	0	0
5/25/2007		0	0	0
6/26/2007		0	0	0
7/23/2007		0	0	0
8/26/2007		0	0	0
9/24/2007		0	0	0
10/23/2007		0	0	0
1/28/2008		0	0	0
4/29/2008		0.15	NA	0
GP-05		11/20/2006	0	0
	1/10/2007	0	0	0
	2/9/2007	0	0	0
	3/9/2007	0	0	0
	4/21/2007	0	0	0
	5/25/2007	0	0	0
	6/26/2007	0	0	0
	7/23/2007	0	0	0
	8/26/2007	0	0	0
	9/24/2007	0	0	0
	10/23/2007	0	0	0
	1/28/2008	0	0	0
	4/29/2008	0.15	NA	0



**TABLE 5
SOIL VAPOR RESULTS
LOWRY OU2 LANDFILL SITE
FORMER LOWRY AIR FORCE BASE
DENVER, COLORADO**

Vapor Point ID	Date	Field Measured CH ₄ %	Analytical Results CH ₄ ppm (%)	PID Readings
GP-06	11/20/2006	0	0	0
	1/10/2007	0	0	0
	2/9/2007	0.05	0	0
	3/9/2007	0	0	0
	4/21/2007	0	0	0
	5/25/2007	0	0	0
	6/26/2007	0	0	0
	7/23/2007	0	0	0
	8/26/2007	0	0	0
	9/24/2007	0	0	0
	10/23/2007	0	0	0
	1/28/2008	0	0	0
	4/29/2008	0.15	NA	0
	GP-07	11/20/2006	0	0
1/10/2007		0	0	0
2/9/2007		0	0	0
3/9/2007		0	0	0
4/21/2007		0	0	0
5/25/2007		0	0	0
6/26/2007		0	0	0
7/23/2007		0	0	0
8/26/2007		0	0	0
9/24/2007		0	0	0
10/23/2007		0	0	0
1/28/2008		0	0	0
4/29/2008		0.2	NA	0
GP-08		11/20/2006	0	0
	1/10/2007	0	0	0
	2/9/2007	0	0	0
	3/9/2007	0	0	0
	4/21/2007	0	0	0
	5/25/2007	0	0	0
	6/26/2007	0	0	0
	7/23/2007	0	0	0
	8/26/2007	0	0	0
	9/24/2007	0	0	0
	10/23/2007	0	0	0
	1/28/2008	0	0	0
	4/29/2008	0.15	NA	0
	GP-09	11/20/2006	0	0
1/10/2007		0	0	0
2/9/2007		0	0	0
3/9/2007		0	0	0
4/21/2007		0	0	0
5/25/2007		0	0	0
6/26/2007		0	0	0
7/23/2007		0	0	0
8/26/2007		0	0	0
9/24/2007		0	0	0
10/23/2007		0	0	0
1/28/2008		0	0	0
4/29/2008		0.15	NA	0
GP-10		11/20/2006	0	0
	1/10/2007	0	0	0
	2/9/2007	0	0	0
	3/9/2007	0	0	0
	4/21/2007	0	0	0
	5/25/2007	0	0	0
	6/26/2007	0	0	0
	7/23/2007	0	0	0
	8/26/2007	0	0	0
	9/24/2007	0	0	0
	10/23/2007	0	0	0
	1/28/2008	0	0	0
	4/29/2008	0	0	0



**TABLE 5
SOIL VAPOR RESULTS
LOWRY OU2 LANDFILL SITE
FORMER LOWRY AIR FORCE BASE
DENVER, COLORADO**

Vapor Point ID	Date	Field Measured CH ₄ %	Analytical Results CH ₄ ppm (%)	PID Readings
GP-11	11/20/2006	0	0	0
	1/10/2007	0	0	0
	2/9/2007	0	0	0
	3/9/2007	0	0	0
	4/21/2007	0	0	0
	5/25/2007	0	0	0
	6/26/2007	0	0	0
	7/23/2007	0	0	0
	8/26/2007	0	0	0
	9/24/2007	0	0	0
	10/23/2007	0	0	0
	1/28/2008	0	0	0
	4/29/2008	0.15	NA	0
	GP-12	11/20/2006	0	0
1/10/2007		0	0	0
2/9/2007		0	0	0
3/9/2007		0	0	0
4/21/2007		0	0	0
5/25/2007		0	0	0
6/26/2007		0	0	0
7/23/2007		0	0	0
8/26/2007		0	0	0
9/24/2007		0	0	0
10/23/2007		0	0	0
1/28/2008		0	0	0
4/29/2008		0.2	NA	0
GP-13		11/20/2006	0	0
	1/10/2007	0	0	0
	2/9/2007	0	0	0
	3/9/2007	0	0	0
	4/21/2007	0	0	0
	5/25/2007	0	0	0
	6/26/2007	0	0	0
	7/23/2007	0	0	0
	8/26/2007	0	0	0
	9/24/2007	0	0	0
	10/23/2007	0	0	0
	1/28/2008	0	0	0
	4/29/2008	0	0	0
	GP-14	11/20/2006	0	0
1/10/2007		0	0	0
2/9/2007		0	0	0
3/9/2007		0	0	0
4/21/2007		0	0	0
5/25/2007		0	0	0
6/26/2007		0	0	0
7/23/2007		0	0	0
8/26/2007		0	0	0
9/24/2007		0	0	0
10/23/2007		0	0	0
1/28/2008		0	0	0
4/29/2008		0	0	0
GP-15		11/20/2006	0	0
	1/10/2007	0	0	0
	2/9/2007	0	0	0
	3/9/2007	0	0	0
	4/21/2007	0	0	0
	5/25/2007	0	0	0
	6/26/2007	0	0	0
	7/23/2007	0	0	0
	8/26/2007	0	0	0
	9/24/2007	0	0	0
	10/23/2007	0	0	0
	1/28/2008	0	0	0
	4/29/2008	0.2	NA	0



TABLE 5
SOIL VAPOR RESULTS
LOWRY OU2 LANDFILL SITE
FORMER LOWRY AIR FORCE BASE
DENVER, COLORADO

Vapor Point ID	Date	Field Measured CH ₄ %	Analytical Results CH ₄ ppm (%)	PID Readings
GP-16	11/20/2006	0	0	0
	1/10/2007	0	0	0
	2/9/2007	0	0	0
	3/9/2007	0	0	0
	4/21/2007	0	0	0
	5/25/2007	0	0	0
	6/26/2007	0	0	0
	7/23/2007	0	0	0
	8/26/2007	0	0	0
	9/24/2007	0	0	0
	10/23/2007	0	0	0
	1/28/2008	0	0	0
	4/29/2008	0.25	<10 (<0.001%)	0
	GP-17	11/20/2006	0	0
1/10/2007		0	0	0
2/9/2007		0	0	0
3/9/2007		0	0	0
4/21/2007		0	0	0
5/25/2007		0	0	0
6/26/2007		0	0	0
7/23/2007		0	0	0
8/26/2007		0	0	0
9/24/2007		0	0	0
10/23/2007		0	0	0
1/28/2008		0	0	0
4/29/2008		0.25	<10 (<0.001%)	0
GP-18		11/20/2006	0	0
	1/10/2007	0	0	0
	2/9/2007	0	0	0
	3/9/2007	0	0	0
	4/21/2007	0	0	0
	5/25/2007	0	0	0
	6/26/2007	0	0	0
	7/23/2007	0	0	0
	8/26/2007	0	0	0
	9/24/2007	0	0	0
	10/23/2007	0	0	0
	1/28/2008	0	0	0
	4/29/2008	0.2	NA	0
	GP-19	11/20/2006	0	0
1/10/2007		0	0	0
2/9/2007		NS	NS	0
3/9/2007		NS	NS	0
4/21/2007		NS	NS	0
5/25/2007		NS	NS	0
6/26/2007		NS	NS	0
7/23/2007		NS	NS	0
8/26/2007		0	0	0
9/24/2007		NS	NS	0
10/23/2007		NS	NS	0
1/28/2008		NS	NS	0
4/29/2008		0.25	NA	0
GP-20		11/21/2006	0	0
	1/10/2007	0	0	0
	2/9/2007	0	0	0
	3/9/2007	0	0	0
	4/21/2007	0	0	0
	5/25/2007	0	0	0
	6/26/2007	0	0	0
	7/23/2007	0	0	0
	8/26/2007	0	0	0
	9/24/2007	0	0	0
	10/23/2007	0	0	0
	1/28/2008	0	0	0
	4/29/2008	0.15	NA	0



**TABLE 5
SOIL VAPOR RESULTS
LOWRY OU2 LANDFILL SITE
FORMER LOWRY AIR FORCE BASE
DENVER, COLORADO**

Vapor Point ID	Date	Field Measured CH ₄ %	Analytical Results CH ₄ ppm (%)	PID Readings
GP-21	11/21/2006	0	0	0
	1/10/2007	0.05	0	0
	2/9/2007	0.05	0	0
	3/9/2007	0	0	0
	4/21/2007	0	0	0
	5/25/2007	0	0	0
	6/26/2007	0	0	0
	7/23/2007	0	0	0
	8/26/2007	0	0	0
	9/24/2007	0	0	0
	10/23/2007	0	0	0
	1/28/2008	0	0	0
	4/29/2008	0.15	NA	0
GP-22	11/21/2006	0	0	0
	1/10/2007	0.35	0	0
	2/9/2007	0.7	0	0
	3/9/2007	0.95	0	0
	4/21/2007	0.6	0	0
	5/25/2007	1.2 ^A	13,000 (1.3 %)	0
	6/26/2007	2	45800 (4.58%)	0
	7/23/2007	0.45	8700 (0.87%)	0
	8/26/2007	0	0	0
	9/24/2007	0	0	0
	10/23/2007	0	0	0
	1/28/2008	0	0	0
	4/29/2008	0.15	NA	0
GP-23	11/21/2006	0	0	0
	1/10/2007	0	0	0
	2/9/2007	0	0	0
	3/9/2007	0	0	0
	4/21/2007	0	0	0
	5/25/2007	0	0	0
	6/26/2007	0	0	0
	7/23/2007	0	0	0
	8/26/2007	0	0	0
	9/24/2007	0	0	0
	10/23/2007	0	0	0
	1/28/2008	0	0	0
	4/29/2008	0	0	0
GP-24	11/21/2006	0.1 ^B	<0.0005%	0
	1/10/2007	0.05	0	0
	2/9/2007	0	0	0
	3/9/2007	0	0	0
	4/21/2007	0	0	0
	5/25/2007	0.05	0	0
	6/26/2007	0	0	0
	7/23/2007	0	0	0
	8/26/2007	0	0	0
	9/24/2007	0	0	0
	10/23/2007	0	0	0
	1/28/2008	0	0	0
	4/29/2008	0.2	NA	0
GP-25	11/21/2006	0	0	0
	1/10/2007	0.1	0	0
	2/9/2007	0	0	0
	3/9/2007	0	0	0
	4/21/2007	0	0	0
	5/25/2007	0	0	0
	6/26/2007	0	0	0
	7/23/2007	0	0	0
	8/26/2007	0	0	0
	9/24/2007	0	0	0
	10/23/2007	0	0	0
	1/28/2008	0	0	0
	4/29/2008	0.2	NA	0



**TABLE 5
SOIL VAPOR RESULTS
LOWRY OU2 LANDFILL SITE
FORMER LOWRY AIR FORCE BASE
DENVER, COLORADO**

Vapor Point ID	Date	Field Measured CH ₄ %	Analytical Results CH ₄ ppm (%)	PID Readings
GP-26	11/21/2006	0	0	0
	1/10/2007	0	0	0
	2/9/2007	0	0	0
	3/9/2007	0	0	0
	4/21/2007	0	0	0
	5/25/2007	0.5	0	0
	6/26/2007	0	0	0
	7/23/2007	0	0	0
	8/26/2007	0	0	0
	9/24/2007	0	0	0
	10/23/2007	0	0	0
	1/28/2008	0	0	0
	4/29/2008	0.2	NA	0
	GP-27	11/21/2006	0	0
1/10/2007		0	0	0
2/9/2007		0	0	0
3/9/2007		0	0	0
4/21/2007		0	0	0
5/25/2007		0	0	0
6/26/2007		0	0	0
7/23/2007		0	0	0
8/26/2007		0	0	0
9/24/2007		0	0	0
10/23/2007		0	0	0
1/28/2008		0	0	0
4/29/2008		0.2	NA	0

Notes:

% - percent by volume
A - Value exceeded 1.0% CH₄. Laboratory analytical results are reported in ppm and (%) and are discussed in the text and Attachment 5 of 5/25/2007 results
B - Laboratory analytical result conducted 11/21/06, less than five parts per million by volume (ppm) or less than 0.0005% CH₄
CH₄ - methane
NA - Not Analyzed
NS - GP-19 not sampled due to water in sample lines
ppm - parts per million
Monitoring results for December 2006 were not obtained due to heavy snowfall that prevented access to the site.
PID - Photoionization Detector

