



June 27, 2007

Ms. Sheila Gaston  
Colorado Department of Public Health and Environment  
Hazardous Materials and Waste Management Division  
4300 Cherry Creek Drive South  
Denver, Colorado 80246-1530

RE: Groundwater, Surface Water, and Soil Vapor Monitoring Report  
Post-Closure Monitoring - Second Quarter 2007  
Operable Unit 2 (OU-2) Landfill Site  
Former Lowry Air Force Base  
Denver, Colorado

Dear Ms. Gaston:

LT Environmental, Inc. (LTE) has been retained by Lowry Assumption, LLC (LAC) to conduct quarterly groundwater, surface water, and soil vapor sampling events at the above-referenced site (Figure 1). In accordance with the requirements set forth in the Colorado Department of Public Health and Environment (CDPHE) - approved *Phase 2 Corrective Action Plan for the Operable Unit 2 Landfill Closure at Lowry (MACTEC, 2004) (Phase 2 CAP)*, LTE conducted the post-closure monitoring activities for OU-2 in April and May 2007. A total of ten monitoring wells (LZ-13, LFPOC07 through LFPOC13, BG-5 and BG-6) and three surface water samples (SW-1, SW-2, and SW-3) were sampled on April 19 and April 20, 2007. A total of 27 soil vapor points (GP-01 through GP-27) were field screened for the presence of methane on April 21, 2007 and again on May 25, 2007. The analytical results from the second quarter 2007 groundwater and surface water monitoring activities as well as results of the soil vapor monitoring activities are discussed below.

### **Groundwater Sampling**

Depth to groundwater was measured in each monitoring well prior to purging. All monitoring wells sampled were purged with a peristaltic pump using low-flow purge method. Measurements of temperature, pH, and electrical conductivity (EC) were collected and each monitoring well was sampled after the three parameters were determined to be stabilized (i.e., readings within +/- 10 percent of the previous reading). Field parameters were measured using a YSI 556<sup>®</sup> Multi-Probe Field Meter (YSI 556<sup>®</sup> Meter). Volatile organic compounds (VOCs) were screened in the headspace of each monitoring well, utilizing a Mini Rae 2000<sup>®</sup> photoionization detector (PID) prior to purging. Groundwater was inspected for odor and the presence of phase-separated hydrocarbons (PSH). Field observations were recorded on monitoring well development/purging forms as well as in the field logbook. Copies of the monitoring well development/purge forms are included in Attachment 1 on the attached CD.

Groundwater samples were collected in laboratory prepared hydrochloric acid preserved 40-milliliter (ml) vials, nitric acid preserved 500-ml poly bottles, and sulfuric acid preserved 250-ml amber bottles. Samples were placed on ice and delivered with a completed chain-of-custody (COC) form to Paragon Analytics Laboratories (Paragon) located in Fort Collins, Colorado. In accordance with the Phase 2 CAP, groundwater samples were submitted for analysis of the following:



- Alkalinity, Carbonates, Bicarbonates by United States Environmental Protection Agency (EPA) Method 310.1;
- Gross Alpha and Gross Beta by EPA Method 9310;
- Ion Chromatography for Chloride, Nitrite, Nitrate and Sulfate by EPA Method 9056;
- Total Organic Carbon (TOC) by Method 9060;
- Total ICP Metals by Method 601; and
- Volatile Organic Compounds (VOCs) by EPA Method 8260B.

### **Surface Water Sampling**

Surface water samples were collected from three designated locations along Westerly Creek on April 20, 2007. The approximate surface water sample locations are shown on Figure 1. Prior to the collection of surface water samples, water parameters including pH, temperature, and EC were measured using a YSI 556<sup>®</sup> Meter and recorded on the field forms. In addition to water parameters, creek conditions including flow direction, estimated flow velocity, turbidity, and water depth were recorded. Every effort was made not to disturb creek sediment during the collection of water samples. In addition, surface water was collected in order of downstream to upstream to avoid cross contamination from any disturbed sediment load.

Surface water samples were collected in laboratory prepared HCl preserved 40-ml vials, nitric acid preserved 500-ml poly bottles, and sulfuric acid preserved 250-ml amber bottles. Samples were placed on ice and delivered with a completed COC form to Paragon. In accordance with the Phase 2 CAP, surface water samples were submitted for analysis of the following:

- Alkalinity, Carbonates, Bicarbonates by EPA Method 310.1;
- Gross Alpha and Gross Beta by EPA Method 9310;
- Ion Chromatography for Chloride, Nitrite, Nitrate and Sulfate by EPA Method 9056;
- TOC by Method 9060;
- Total ICP Metals by Method 6010; and
- VOCs by EPA Method 8260B.

### **Soil Vapor Point Monitoring**

Two post-closure soil vapor monitoring events were completed on April 21, 2007 and May 25, 2007. A total of 27 soil vapor points (GP-01 through GP-27) were purged of three liters of gas with an peristaltic pump prior to collection of the soil vapor sample. The soil vapor point was field screened with a Mine Safety Appliances (MSA) Gasport<sup>®</sup> Gas Tester (Gasport<sup>®</sup>) to assess the presence of methane (CH<sub>4</sub>) and with a Mini Rae 2000<sup>®</sup> PID to screen for the presence of VOCs. Copies of the gas monitoring forms are included in Attachment 2 on the attached CD.

The MSA Gasport<sup>®</sup> was used to measure methane in each soil vapor point. The MSA Gasport<sup>®</sup> reads up to 100 percent lower explosive limit (five percent by volume of methane) then converts to read percent by volume methane up to 100 percent methane. In the event the MSA Gasport<sup>®</sup>



measured methane in a soil vapor point that equaled or exceeded one percent by volume of methane, a one liter Tedlar<sup>®</sup> bag containing the sample would be placed in a cooler, and delivered with a completed COC to Data Chem Analytical Laboratories, Inc. for analysis of methane by EPA Method GC FID.

### **Quality Assurance and Quality Control (QA/QC)**

Field quality control (QC) groundwater and surface water samples consisted of trip blanks and duplicate samples. One trip blank accompanied every shipment of samples to be analyzed for VOCs. Blind duplicate samples collected for groundwater sample LFPOC12 and surface water sample SW-1 were submitted for this sampling event and were analyzed for the same parameters as the routine environmental samples.

The laboratory general practices and analytical QC samples included a method blank and a matrix spike/matrix spike duplicate (MS/MSD) for each sample batch. QA/QC data are included in Attachment 4 on the attached CD.

To document that the water data quality meets the OU-2 work plan requirements, LTE retained Diane Short & Associates to validate the data. The EPA Laboratory *Data Validation Functional Guidelines* for evaluating inorganic and organic analyses were used to perform this data validation review. The review of the groundwater and surface water samples includes validation of all COCs, calibrations and QC forms referencing the QC limits. In addition, the data are qualified referencing the EPA *Contract Laboratory Program (CLP) Data Validation Guidance* with the usability modifications defined by the data validator. Data validation qualification is noted by a “J” or “R” qualifier next to the reported data value. The “J” indicates that one or more of the method QC limits have been violated and/or the data may be an estimated value below the method reporting limit (MRL). The “R” qualifier indicates that the data are considered to be rejected due to significant deviations from the acceptance limits. In order for the qualifiers to be useful in determining the effect of the violation on the data, codes for the violation(s) and a numeric value of the violation are appended to the qualifier in the reviewers report, which is included in Attachment 3 on the attached CD.

Analytical results for the November 2006, February 2007, and April 2007 sampling events are summarized on the attached tables. Undetected values from the laboratory are shown as a “<” symbol in front of the reporting limit. Values may also be flagged by the data validator as non-detect due to blank contamination, in which case “(UB)” would have been displayed next to the reported value. Results that are coded with a “(J)” after the result indicate the value is either a low level value greater than Method Detection Limit (> MDL); or less than Reporting Limit (< RL) from the laboratory, or data are estimated due to a QC outlier as more fully specified in the validation reports.

April 2007 data are fully usable for project purposes. Results that are coded with an “(R)” after the result indicate that the data are rejected and are not recommended for use in project decisions. These rejected data are all due to low response factors for the common volatile ‘poor responders’ and the EPA is considering dropping the rejected status as these are consistently and inherently low in response. In all cases, the laboratory control samples and mid-range standards were acceptable and the compounds could have been detected at elevated levels if present. The data validators concluded



one value, Acetone, was rejected from the April 2007 sampling event and it is not recommended for use in the project discussion.

### **Groundwater Analytical Results**

Table 1 summarizes VOC analytical results for the groundwater samples collected during November 2006, February 2007, and April 2007 sampling events. Total Metal analytical results for groundwater are summarized in Table 2. Table 3 summarizes water quality parameters in groundwater. Gross Alpha and Gross Beta results are summarized in Table 4. Groundwater analytical laboratory reports, laboratory QA/QC data, and COC documentation are included in Attachment 4 on the attached CD.

VOC concentrations in the groundwater samples were compared to the Colorado Department of Public Health and Environment (CDPHE) groundwater standards and Federal Maximum Contaminant Levels (MCL) drinking water quality standards. The results indicate that all groundwater samples were non-detect or below the standards for VOCs. Total metals results indicate that there are no groundwater samples that exceeded Federal drinking water MCLs. Additionally, field screening the headspace of the monitoring wells concluded no measurable VOCs by the PID.

During the April 2007 event, analytical results indicated that Gross Alpha in groundwater was detected in two upgradient monitoring wells (BG-5 and LFPOC09) and six downgradient monitoring wells (LFPOC07, LFPOC08, LFPOC10, LFPOC11, LFPOC13, and LZ-13) above CDPHE groundwater standards.

### **Surface Water Analytical Results**

Table 1 includes VOC analytical results for the surface water samples collected during the November 2006, February 2007, and April 2007 sampling events. Total Metals analytical results for surface water samples for these monitoring events are included in Table 2. Table 3 summarizes water quality parameters for surface water samples collected during the November 2006, February 2007, and April 2007 sampling events. Gross Alpha and Gross Beta analytical results for surface water samples collected during this monitoring event are included Table 4. Surface water analytical laboratory reports, laboratory QA/QC data, and COC documentation are included in Attachment 4 on the attached CD.

VOC concentrations for the surface water samples were compared to the CDPHE groundwater standards and Federal MCL drinking water quality standards. The results indicate that all surface water samples were non-detect or below the standards for VOCs. Total metals results indicate that there are no surface water samples that exceeded Federal drinking water MCLs. CDPHE Secondary Drinking Water Standards for Chloride and Sulfate were exceeded in some surface water samples collected in November 2006 and February 2007, but were not exceeded in the April 2007 event.

Analytical results indicated that Gross Alpha results were below the CDPHE standards for the surface water sampled during this quarterly monitoring event.



## Soil Vapor Point Results

Based on the field screening during the April 2007 and May 2007 monitoring event, one soil vapor point had a detection of methane above the soil gas action level of one percent (%). On May 25, 2007, soil vapor point GP-22 field screening measurement was 1.2 % methane. In response to the elevated soil vapor measurement, a sample was collected with a one liter Tedlar® bag container, placed in a cooler, and delivered with a completed COC to Data Chem Analytical Laboratories, Inc. for analysis of methane by EPA Method GC FID. The laboratory analytical result for GP-22 taken on May 25, 2007, was 13,000 parts per million (ppm) or 1.3 % methane, which is below the lower explosive limits of 50,000 ppm or 5.0% methane. Additionally, field screening the headspace of the soil vapor points concluded no measurable VOCs by the PID.

Field screening measurements for the soil vapor sample collected during the two monthly monitoring events are presented in Table 5. Soil vapor laboratory reports and COC documentation are presented in an electronic format as Attachment 5 on the attached CD.

## Site Update

The fourth of eight quarterly groundwater and surface water monitoring events is scheduled for July 23, 2007. Soil vapor monitoring will continue on a monthly schedule with monthly post-closure operation and maintenance activities through October 2007. The next soil vapor monitoring event is scheduled for June 26, 2007. Please contact our office at 303-433-9788 if you have any questions about the data provided or need further information regarding the site.

Sincerely,

LT ENVIRONMENTAL, INC.

Chris Purcell  
Staff Geologist

Tom Murphy, P.G.  
Project Manager

cc: Paul Carroll – AFRPA (2)  
Monty Force – LRA  
Jim Schrack – Aurora  
Pat Smith – EPA Region 8

Alioune Sogue – CCD DEH  
Paul Weaverling - IRGA  
John Yerton - IRGA (2)

### Table of Contents (Enclosures):

- Figure 1 – Site Map
- Table 1 – VOCs Laboratory Analytical Results
- Table 2 – Total Metals Laboratory Analytical Results
- Table 3 – Field Parameters
- Table 4 – Gross Alpha and Gross Beta Laboratory Analytical Results
- Table 5 – Soil Vapor Results

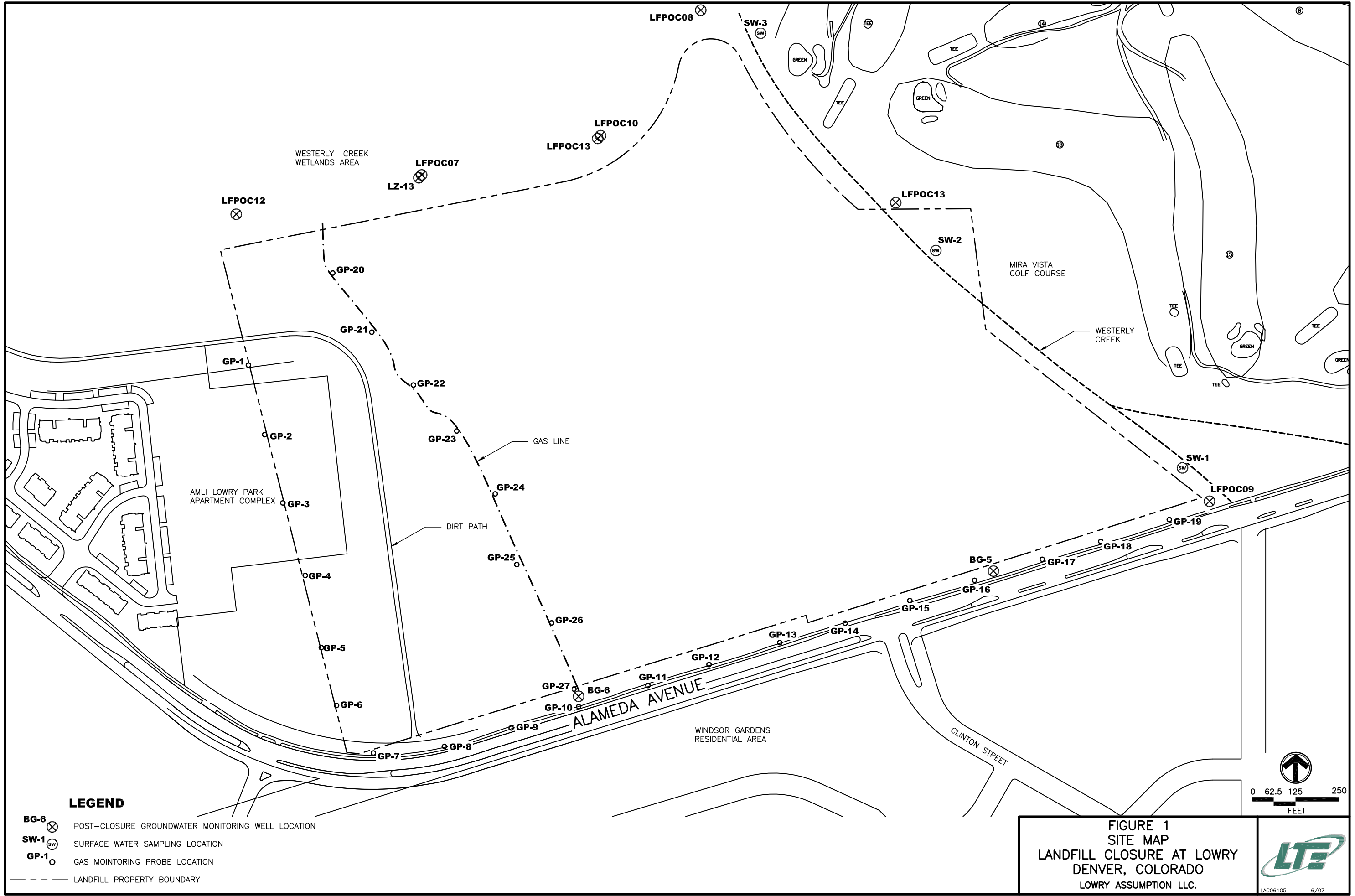


Provided on CD




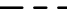
- Attachment 1 – Monitoring Well Development / Purge Forms
- Attachment 2 – Soil Vapor Monitoring Form
- Attachment 3 -- Validation Reports
- Attachment 4 -- Groundwater and Surface Water Analytical results
- Attachment 5 – Soil Vapor Analytical results

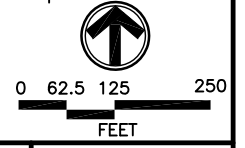
**FIGURE AND TABLES**





**LEGEND**

- 
 BG-6 POST-CLOSURE GROUNDWATER MONITORING WELL LOCATION
- 
 SW-1 SURFACE WATER SAMPLING LOCATION
- 
 GP-1 GAS MONITORING PROBE LOCATION
- 
 LANDFILL PROPERTY BOUNDARY



**FIGURE 1**  
**SITE MAP**  
**LANDFILL CLOSURE AT LOWRY**  
**DENVER, COLORADO**  
**LOWRY ASSUMPTION LLC.**



**TABLE 1**  
**LABORATORY ANALYTICAL RESULTS - VOLATILE ORGANIC COMPOUNDS**  
**LOWRY OU2 LANDFILL SITE**  
**FORMER LOWRY AIR FORCE BASE**  
**DENVER, COLORADO**

Sampling Location / Well ID	Sample Date	Analytical Method	Volatile Organic Compounds (ug/L)													
			Acetone	Benzene	Bromochloro methane	Bromodichloro methane	Bromoform	Carbon Disulfide	Carbon tetrachloride	Chlorobenzene	Chloroethane	Chloroform	Dibromochloro methane	1,2-Dibromo-3-chloropropane	1,2-Dibromo ethane	1,2-Dichloro benzene
<b>Upgradient</b>																
BG-5	11/13/06	SW8260_25	<10	<1	<1	<1	<1	<1	<1	<1	<1	<1	<1	<2	<1	<1
BG-5	2/7/07	SW8260_25	<10 (R)	<1	<1	<1	<1	<1	<1	<1	<1	<1	<1	<2	<1	<1
BG-5	4/19/07	SW8260_25	<10 (R)	<1	<1	<1	<1	<1	<1	<1	<1	<1	<1	<2	<1	<1
BG-6	11/13/06	SW8260_25	<10	<1	<1	<1	<1	<1	<1	<1	<1	<1	<1	<2	<1	<1
BG-6	2/7/07	SW8260_25	<10 (R)	<1	<1	<1	<1	<1	<1	<1	<1	<1	<1	<2	<1	<1
BG-6 (Dup)	2/7/07	SW8260_25	<10 (R)	<1	<1	<1	<1	<1	<1	<1	<1	<1	<1	<2	<1	<1
BG-6	4/20/07	SW8260_25	<10 (R)	<1	<1	<1	<1	<1	<1	<1	<1	<1	<1	<2	<1	<1
LFPOC09	11/13/06	SW8260_25	<10	<1	<1	<1	<1	<1	<1	<1	<1	<1	<1	<2	<1	<1
LFPOC09	2/8/07	SW8260_25	<10 (R)	<1	<1	<1	<1	<1	<1	<1	<1	<1	<1	<2	<1	<1
LFPOC09	4/19/07	SW8260_25	<10 (R)	<1	<1	<1	<1	<1	<1	<1	<1	<1	<1	<2	<1	<1
<b>Downgradient</b>																
LFPOC07	11/13/06	SW8260_25	<10	<1	<1	<1	<1	<1	<1	<1	<1	<1	<1	<2	<1	<1
LFPOC07	2/8/07	SW8260_25	<10 (R)	<1	<1	<1	<1	<1	<1	<1	<1	<1	<1	<2	<1	<1
LFPOC07	4/19/07	SW8260_25	<10 (R)	<1	<1	<1	<1	<1	<1	<1	<1	<1	<1	<2	<1	<1
LFPOC08	11/13/06	SW8260_25	<10	<1	<1	<1	<1	<1	<1	<1	<1	<1	<1	<2	<1	<1
LFPOC08	2/7/07	SW8260_25	<10 (R)	<1	<1	<1	<1	<1	<1	<1	<1	<1	<1	<2	<1	<1
LFPOC08	4/19/07	SW8260_25	<10 (R)	<1	<1	<1	<1	<1	<1	<1	<1	<1	<1	<2	<1	<1
LFPOC10	11/13/06	SW8260_25	<10	<1	<1	<1	<1	<1	<1	<1	<1	<1	<1	<2	<1	<1
LFPOC10	2/7/07	SW8260_25	<10 (R)	<1	<1	<1	<1	<1	<1	<1	<1	<1	<1	<2	<1	<1
LFPOC10	4/19/07	SW8260_25	<10 (R)	<1	<1	<1	<1	<1	<1	<1	<1	<1	<1	<2	<1	<1
LFPOC11	11/13/06	SW8260_25	<10	<1	<1	<1	<1	<1	<1	<1	<1	<1	<1	<2	<1	<1
LFPOC11	2/7/07	SW8260_25	<10 (R)	<1	<1	<1	<1	<1	<1	<1	<1	<1	<1	<2	<1	<1
LFPOC11	4/19/07	SW8260_25	<10 (R)	<1	<1	<1	<1	<1	<1	<1	<1	<1	<1	<2	<1	<1
LFPOC12	11/13/06	SW8260_25	<10	<1	<1	<1	<1	<1	<1	<1	<1	<1	<1	<2	<1	<1
LFPOC12	2/8/07	SW8260_25	<10 (R)	<1	<1	<1	<1	<1	<1	<1	<1	<1	<1	<2	<1	<1
LFPOC12	4/19/07	SW8260_25	<10 (R)	<1	<1	<1	<1	<1	<1	<1	<1	<1	<1	<2	<1	<1
LFPOC12 (Dup)	4/19/07	SW8260_25	<10 (R)	<1	<1	<1	<1	<1	<1	<1	<1	<1	<1	<2	<1	<1
LFPOC13	11/13/06	SW8260_25	<10	<1	<1	<1	<1	<1	<1	<1	<1	<1	<1	<2	<1	<1
LFPOC13	2/7/07	SW8260_25	<10 (R)	<1	<1	<1	<1	<1	<1	<1	<1	<1	<1	<2	<1	<1
LFPOC13	4/20/07	SW8260_25	<10 (R)	<1	<1	<1	<1	<1	<1	<1	<1	<1	<1	<2	<1	<1
LZ-13	11/13/06	SW8260_25	<10	<1	<1	<1	<1	<1	<1	<1	<1	<1	<1	<2	<1	<1
LZ-13	2/8/07	SW8260_25	<10 (R)	<1	<1	<1	<1	<1	<1	<1	<1	<1	<1	<2	<1	<1
LZ-13	4/19/07	SW8260_25	<10 (R)	<1	<1	<1	<1	<1	<1	<1	<1	<1	<1	<2	<1	<1
<b>Surface Water</b>																
SW-1	11/21/06	SW8260_25	<10	<1	<1	<1	<1	<1	<1	<1	<1	<1	<1	<2	<1	<1
SW-1	2/8/07	SW8260_25	<10 (R)	<1	<1	<1	<1	<1	<1	<1	<1	<1	<1	<2	<1	<1
SW-1 (Dup)	2/8/07	SW8260_25	<10 (R)	<1	<1	<1	<1	<1	<1	<1	<1	<1	<1	<2	<1	<1

Notes: CDPHE - Colorado Department of Public Health and Environment  
ug/L - micrograms per Liter (Dup) - Duplicate sample MCLs - Maximum Contaminant Levels  
< - below the Reporting Limit (J) - Result is an estimated value. (R) - Result is a rejected value.

**TABLE 1**  
**LABORATORY ANALYTICAL RESULTS - VOLATILE ORGANIC COMPOUNDS**  
**LOWRY OU2 LANDFILL SITE**  
**FORMER LOWRY AIR FORCE BASE**  
**DENVER, COLORADO**

Sampling Location / Well ID	Sample Date	Analytical Method	Volatile Organic Compounds (ug/L)													
			Acetone	Benzene	Bromochloro methane	Bromodichloro methane	Bromoform	Carbon Disulfide	Carbon tetrachloride	Chlorobenzene	Chloroethane	Chloroform	Dibromochloro methane	1,2-Dibromo-3-chloropropane	1,2-Dibromo ethane	1,2-Dichloro benzene
SW-1	4/20/07	SW8260_25	<10 (R)	<1	<1	<1	<1	<1	<1	<1	<1	<1	<1	<2	<1	<1
SW-1 (Dup)	4/20/07	SW8260_25	<10 (R)	<1	<1	<1	<1	<1	<1	<1	<1	<1	<1	<2	<1	<1
SW-2	11/21/06	SW8260_25	<10	<1	<1	<1	<1	<1	<1	<1	<1	<1	<1	<2	<1	<1
SW-2 (Dup)	11/21/06	SW8260_25	<10	<1	<1	<1	<1	<1	<1	<1	<1	<1	<1	<2	<1	<1
SW-2	2/8/07	SW8260_25	<10 (R)	<1	<1	<1	<1	<1	<1	<1	<1	<1	<1	<2	<1	<1
SW-2	4/20/07	SW8260_25	<10 (R)	<1	<1	<1	<1	<1	<1	<1	<1	<1	<1	<2	<1	<1
SW-3	11/21/06	SW8260_25	<10	<1	<1	<1	<1	<1	<1	<1	<1	<1	<1	<2	<1	<1
SW-3	2/8/07	SW8260_25	4.1 (RJ)	<1	<1	<1	<1	<1	<1	<1	<1	<1	<1	<2	<1	<1
SW-3	4/20/07	SW8260_25	<10 (R)	<1	<1	<1	<1	<1	<1	<1	<1	<1	<1	<2	<1	<1
<b>CDPHE Standards (March 2005):</b>			--	<b>5</b>	--	<b>0.56</b>	<b>4</b>	--	<b>5</b>	<b>100</b>	--	<b>3.5</b>	<b>14</b>	<b>0.2</b>		<b>75</b>
<b>Federal Drinking Water Standards (MCLs):</b>															<b>5</b>	

Notes: CDPHE - Colorado Department of Public Health and Environment  
ug/L - micrograms per Liter (Dup) - Duplicate sample  
MCLs - Maximum Contaminant Levels  
< - below the Reporting Limit (J) - Result is an estimated value. (R) - Result is a rejected value.

**TABLE 1**  
**LABORATORY ANALYTICAL RESULTS - VOLATILE ORGANIC COMPOUNDS**  
**LOWRY OU2 LANDFILL SITE**  
**FORMER LOWRY AIR FORCE BASE**  
**DENVER, COLORADO**

Sampling Location / Well ID	Sample Date	Analytical Method	Volatile Organic Compounds (ug/L)														
			1,4-Dichloro benzene	1,1-Dichloro ethane	1,2-Dichloro ethane	1,1-Dichloro ethene	cis-1,2-dichloroethene	trans-1,2-dichloroethene	1,2-Dichloro propane	cis-1,3-di chloropropene	trans-1,3-di chloropropene	Ethylbenzene	2-Hexanone	Bromomethane	Chloro methane	Dibromo methane	
<b>Upgradient</b>																	
BG-5	11/13/06	SW8260_25	<1	<1	<1	<1	<1	<1	<1	<1	<1	<1	<1	<10	<1	<1	<1
BG-5	2/7/07	SW8260_25	<1	<1	<1	<1	<1	<1	<1	<1	<1	<1	<1	<10	<1	<1	<1
BG-5	4/19/07	SW8260_25	<1	<1	<1	<1	<1	<1	<1	<1	<1	<1	<1	<10	<1	<1	<1
BG-6	11/13/06	SW8260_25	<1	<1	<1	<1	<1	<1	<1	<1	<1	<1	<1	<10	<1	<1	<1
BG-6	2/7/07	SW8260_25	<1	<1	<1	<1	<1	<1	<1	<1	<1	<1	<1	<10	<1	<1	<1
BG-6 (Dup)	2/7/07	SW8260_25	<1	<1	<1	<1	<1	<1	<1	<1	<1	<1	<1	<10	<1	<1	<1
BG-6	4/20/07	SW8260_25	<1	<1	<1	<1	<1	<1	<1	<1	<1	<1	<1	<10	<1	<1	<1
LFPOC09	11/13/06	SW8260_25	<1	<1	0.23 (J)	<1	<1	<1	<1	<1	<1	<1	<1	<10	<1	<1	<1
LFPOC09	2/8/07	SW8260_25	<1	<1	0.33 (J)	<1	<1	<1	<1	<1	<1	<1	<1	<10	<1	<1	<1
LFPOC09	4/19/07	SW8260_25	<1	<1	<1	<1	<1	<1	<1	<1	<1	<1	<1	<10	<1	<1	<1
<b>Downgradient</b>																	
LFPOC07	11/13/06	SW8260_25	<1	<1	<1	<1	<1	<1	<1	<1	<1	<1	<1	<10	<1	<1	<1
LFPOC07	2/8/07	SW8260_25	<1	<1	<1	<1	0.25 (J)	<1	<1	<1	<1	<1	<1	<10	<1	<1	<1
LFPOC07	4/19/07	SW8260_25	<1	<1	<1	<1	0.28	<1	<1	<1	<1	<1	<1	<10	<1	<1	<1
LFPOC08	11/13/06	SW8260_25	<1	<1	<1	<1	0.13 (J)	<1	<1	<1	<1	<1	<1	<10	<1	<1	<1
LFPOC08	2/7/07	SW8260_25	<1	<1	<1	<1	0.21 (J)	<1	<1	<1	<1	<1	<1	<10	<1	<1	<1
LFPOC08	4/19/07	SW8260_25	<1	<1	<1	<1	0.19	<1	<1	<1	<1	<1	<1	<10	<1	<1	<1
LFPOC10	11/13/06	SW8260_25	<1	<1	<1	<1	<1	<1	<1	<1	<1	<1	<1	<10	<1	<1	<1
LFPOC10	2/7/07	SW8260_25	<1	<1	<1	<1	<1	<1	<1	<1	<1	<1	<1	<10	<1	<1	<1
LFPOC10	4/19/07	SW8260_25	<1	<1	<1	<1	<1	<1	<1	<1	<1	<1	<1	<10	<1	<1	<1
LFPOC11	11/13/06	SW8260_25	<1	<1	<1	<1	<1	<1	<1	<1	<1	<1	<1	<10	<1	<1	<1
LFPOC11	2/7/07	SW8260_25	<1	<1	<1	<1	<1	<1	<1	<1	<1	<1	<1	<10	<1	<1	<1
LFPOC11	4/19/07	SW8260_25	<1	<1	<1	<1	<1	<1	<1	<1	<1	<1	<1	<10	<1	<1	<1
LFPOC12	11/13/06	SW8260_25	<1	<1	<1	<1	<1	<1	<1	<1	<1	<1	<1	<10	<1	<1	<1
LFPOC12	2/8/07	SW8260_25	<1	<1	<1	<1	<1	<1	<1	<1	<1	<1	<1	<10	<1	<1	<1
LFPOC12	4/19/07	SW8260_25	<1	<1	<1	<1	<1	<1	<1	<1	<1	<1	<1	<10	<1	<1	<1
LFPOC12 (Dup)	4/19/07	SW8260_25	<1	<1	<1	<1	<1	<1	<1	<1	<1	<1	<1	<10	<1	<1	<1
LFPOC13	11/13/06	SW8260_25	<1	<1	<1	<1	<1	<1	<1	<1	<1	<1	<1	<10	<1	<1	<1
LFPOC13	2/7/07	SW8260_25	<1	<1	<1	<1	<1	<1	<1	<1	<1	<1	<1	<10	<1	<1	<1
LFPOC13	4/20/07	SW8260_25	<1	<1	<1	<1	<1	<1	<1	<1	<1	<1	<1	<10	<1	<1	<1
LZ-13	11/13/06	SW8260_25	<1	<1	<1	<1	<1	<1	<1	<1	<1	<1	<1	<10	<1	<1	<1
LZ-13	2/8/07	SW8260_25	<1	<1	<1	<1	<1	<1	<1	<1	<1	<1	<1	<10	<1	<1	<1
LZ-13	4/19/07	SW8260_25	<1	<1	<1	<1	<1	<1	<1	<1	<1	<1	<1	<10	<1	<1	<1
<b>Surface Water</b>																	
SW-1	11/21/06	SW8260_25	<1	<1	<1	<1	<1	<1	<1	<1	<1	<1	<1	<10	<1	<1	<1
SW-1	2/8/07	SW8260_25	<1	<1	<1	<1	<1	<1	<1	<1	<1	<1	<1	<10	<1	<1	<1
SW-1 (Dup)	2/8/07	SW8260_25	<1	<1	<1	<1	<1	<1	<1	<1	<1	<1	<1	<10	<1	<1	<1

Notes: CDPHE - Colorado Department of Public Health and Environment  
ug/L - micrograms per Liter (Dup) - Duplicate sample MCL - Maximum Contaminant Levels  
< - below the Reporting Limit (J) - Result is an estimated value. (R) - Result is a rejected value.

**TABLE 1**  
**LABORATORY ANALYTICAL RESULTS - VOLATILE ORGANIC COMPOUNDS**  
**LOWRY OU2 LANDFILL SITE**  
**FORMER LOWRY AIR FORCE BASE**  
**DENVER, COLORADO**

Sampling Location / Well ID	Sample Date	Analytical Method	Volatile Organic Compounds (ug/L)													
			1,4-Dichloro benzene	1,1-Dichloro ethane	1,2-Dichloro ethane	1,1-Dichloro ethene	cis-1,2-dichloroethene	trans-1,2-dichloroethene	1,2-Dichloro propane	cis-1,3-di chloropropene	trans-1,3-di chloropropene	Ethylbenzene	2-Hexanone	Bromomethane	Chloro methane	Dibromo methane
SW-1	4/20/07	SW8260_25	<1	<1	<1	<1	<1	<1	<1	<1	<1	<1	<10	<1	<1	<1
SW-1 (Dup)	4/20/07	SW8260_25	<1	<1	<1	<1	<1	<1	<1	<1	<1	<1	<10	<1	<1	<1
SW-2	11/21/06	SW8260_25	<1	<1	<1	<1	<1	<1	<1	<1	<1	<1	<10	<1	<1	<1
SW-2 (Dup)	11/21/06	SW8260_25	<1	<1	<1	<1	<1	<1	<1	<1	<1	<1	<10	<1	<1	<1
SW-2	2/8/07	SW8260_25	<1	<1	<1	<1	<1	<1	<1	<1	<1	<1	<10	<1	<1	<1
SW-2	4/20/07	SW8260_25	<1	<1	<1	<1	<1	<1	<1	<1	<1	<1	<10	<1	<1	<1
SW-3	11/21/06	SW8260_25	<1	<1	<1	<1	<1	<1	<1	<1	<1	<1	<10	<1	<1	<1
SW-3	2/8/07	SW8260_25	<1	<1	<1	<1	<1	<1	<1	<1	<1	<1	<10	<1	<1	<1
SW-3	4/20/07	SW8260_25	<1	<1	<1	<1	<1	<1	<1	<1	<1	<1	<10	<1	<1	<1
<b>CDPHE Standards (March 2005):</b>			<b>75</b>	<b>--</b>	<b>5.0</b>	<b>--</b>			<b>5</b>		<b>--</b>	<b>700</b>	<b>--</b>	<b>--</b>	<b>--</b>	<b>--</b>
<b>Federal Drinking Water Standards (MCLs):</b>							<b>7</b>	<b>100</b>		<b>5</b>						

Notes: CDPHE - Colorado Department of Public Health and Environment  
ug/L - micrograms per Liter (Dup) - Duplicate sample  
MCL - Maximum Contaminant Levels  
< - below the Reporting Limit  
(J) - Result is an estimated value. (R) - Result is a rejected value.

**TABLE 1**  
**LABORATORY ANALYTICAL RESULTS - VOLATILE ORGANIC COMPOUNDS**  
**LOWRY OU2 LANDFILL SITE**  
**FORMER LOWRY AIR FORCE BASE**  
**DENVER, COLORADO**

Sampling Location / Well ID	Sample Date	Analytical Method	Volatile Organic Compounds (ug/L)														
			Methylene chloride	2-Butanone	Iodomethane	4-methyl-2-pentanone	Styrene	1,1,1,2-tetra chloroethane	1,1,2,2-tetra chloroethane	Tetrachloro ethene	Toluene	1,1,1-Tri chloroethane	1,1,2-Tri chloroethane	Trichloro ethene	Trichlorofluoro methane	1,2,3-Tri chloropropane	
<b>Upgradient</b>																	
BG-5	11/13/06	SW8260_25	<1	<10	<1	<10	<1	<1	<1	<1	<1	<1	<1	<1	<1	<1	
BG-5	2/7/07	SW8260_25	<1	<10 (R)	<1	<10	<1	<1	<1	<1	<1	<1	<1	<1	<1	<1	
BG-5	4/19/07	SW8260_25	<1	<10	<1	<10	<1	<1	<1	<1	<1	<1	<1	<1	<1	<1	
BG-6	11/13/06	SW8260_25	<1	<10	<1	<10	<1	<1	<1	<1	<1	<1	<1	<1	<1	<1	
BG-6	2/7/07	SW8260_25	<1	<10 (R)	<1	<10	<1	<1	<1	<1	<1	<1	<1	<1	<1	<1	
BG-6 (Dup)	2/7/07	SW8260_25	<1	<10 (R)	<1	<10	<1	<1	<1	<1	<1	<1	<1	<1	<1	<1	
BG-6	4/20/07	SW8260_25	<1	<10	<1	<10	<1	<1	<1	<1	<1	<1	<1	<1	<1	<1	
LFPOC09	11/13/06	SW8260_25	<1	<10	<1	<10	<1	<1	<1	<1	<1	<1	<1	<1	<1	<1	
LFPOC09	2/8/07	SW8260_25	<1	<10 (R)	<1	<10	<1	<1	<1	<1	<1	<1	<1	<1	<1	<1	
LFPOC09	4/19/07	SW8260_25	<1	<10	<1	<10	<1	<1	<1	<1	<1	<1	<1	<1	<1	<1	
<b>Downgradient</b>																	
LFPOC07	11/13/06	SW8260_25	<1	<10	<1	<10	<1	<1	<1	<1	<1	<1	<1	<1	0.43 (J)	<1	<1
LFPOC07	2/8/07	SW8260_25	<1	<10 (R)	<1	<10	<1	<1	<1	<1	<1	<1	<1	<1	0.6 (J)	<1	<1
LFPOC07	4/19/07	SW8260_25	<1	<10	<1	<10	<1	<1	<1	<1	<1	<1	<1	<1	0.62	<1	<1
LFPOC08	11/13/06	SW8260_25	<1	<10	<1	<10	<1	<1	<1	<1	<1	<1	<1	<1	0.13 (J)	<1	<1
LFPOC08	2/7/07	SW8260_25	<1	<10 (R)	<1	<10	<1	<1	<1	<1	<1	<1	<1	<1	0.21 (J)	<1	<1
LFPOC08	4/19/07	SW8260_25	<1	<10	<1	<10	<1	<1	<1	<1	<1	<1	<1	<1	<1	<1	<1
LFPOC10	11/13/06	SW8260_25	<1	<10	<1	<10	<1	<1	<1	<1	<1	<1	<1	<1	<1	<1	<1
LFPOC10	2/7/07	SW8260_25	<1	<10 (R)	<1	<10	<1	<1	<1	<1	<1	<1	<1	<1	<1	<1	<1
LFPOC10	4/19/07	SW8260_25	<1	<10	<1	<10	<1	<1	<1	<1	<1	<1	<1	<1	<1	<1	<1
LFPOC11	11/13/06	SW8260_25	<1	<10	<1	<10	<1	<1	<1	<1	0.099 (J)	<1	<1	<1	<1	<1	<1
LFPOC11	2/7/07	SW8260_25	<1	<10 (R)	<1	<10	<1	<1	<1	<1	<1	<1	<1	<1	<1	<1	<1
LFPOC11	4/19/07	SW8260_25	<1	<10	<1	<10	<1	<1	<1	<1	<1	<1	<1	<1	<1	<1	<1
LFPOC12	11/13/06	SW8260_25	<1	<10	<1	<10	<1	<1	<1	<1	<1	<1	<1	<1	<1	<1	<1
LFPOC12	2/8/07	SW8260_25	<1	<10 (R)	<1	<10	<1	<1	<1	<1	<1	<1	<1	<1	<1	<1	<1
LFPOC12	4/19/07	SW8260_25	<1	<10	<1	<10	<1	<1	<1	<1	<1	<1	<1	<1	<1	<1	<1
LFPOC12 (Dup)	4/19/07	SW8260_25	<1	<10	<1	<10	<1	<1	<1	<1	<1	<1	<1	<1	<1	<1	<1
LFPOC13	11/13/06	SW8260_25	<1	<10	<1	<10	<1	<1	<1	<1	<1	<1	<1	<1	<1	<1	<1
LFPOC13	2/7/07	SW8260_25	<1	<10 (R)	<1	<10	<1	<1	<1	<1	<1	<1	<1	<1	<1	<1	<1
LFPOC13	4/20/07	SW8260_25	<1	<10	<1	<10	<1	<1	<1	<1	<1	<1	<1	<1	<1	<1	<1
LZ-13	11/13/06	SW8260_25	<1	<10	<1	<10	<1	<1	<1	<1	<1	<1	<1	<1	<1	<1	<1
LZ-13	2/8/07	SW8260_25	<1	<10 (R)	<1	<10	<1	<1	<1	<1	<1	<1	<1	<1	<1	<1	<1
LZ-13	4/19/07	SW8260_25	<1	<10	<1	<10	<1	<1	<1	<1	<1	<1	<1	<1	<1	<1	<1
<b>Surface Water</b>																	
SW-1	11/21/06	SW8260_25	<1	<10	<1	<10	<1	<1	<1	<1	<1	<1	<1	<1	<1	<1	<1
SW-1	2/8/07	SW8260_25	<1	<10 (R)	<1	<10	<1	<1	<1	<1	<1	<1	<1	<1	<1	<1	<1
SW-1 (Dup)	2/8/07	SW8260_25	<1	<10 (R)	<1	<10	<1	<1	<1	<1	<1	<1	<1	<1	<1	<1	<1

Notes: CDPHE - Colorado Department of Public Health and Environment  
ug/L - micrograms per Liter (Dup) - Duplicate sample MCL - Maximum Contaminant Levels  
< - below the Reporting Limit (J) - Result is an estimated value. (R) - Result is a rejected value.

**TABLE 1**  
**LABORATORY ANALYTICAL RESULTS - VOLATILE ORGANIC COMPOUNDS**  
**LOWRY OU2 LANDFILL SITE**  
**FORMER LOWRY AIR FORCE BASE**  
**DENVER, COLORADO**

Sampling Location / Well ID	Sample Date	Analytical Method	Volatile Organic Compounds (ug/L)														
			Methylene chloride	2-Butanone	Iodomethane	4-methyl-2-pentanone	Styrene	1,1,1,2-tetra chloroethane	1,1,2,2-tetra chloroethane	Tetrachloro ethene	Toluene	1,1,1-Tri chloroethane	1,1,2-Tri chloroethane	Trichloro ethene	Trichlorofluoro methane	1,2,3-Tri chloropropane	
SW-1	4/20/07	SW8260_25	<1	<10	<1	<10	<1	<1	<1	<1	<1	<1	<1	<1	<1	<1	<1
SW-1 (Dup)	4/20/07	SW8260_25	<1	<10	<1	<10	<1	<1	<1	<1	<1	<1	<1	<1	<1	<1	<1
SW-2	11/21/06	SW8260_25	<1	<10	<1	<10	<1	<1	<1	<1	<1	<1	<1	<1	<1	<1	<1
SW-2 (Dup)	11/21/06	SW8260_25	<1	<10	<1	<10	<1	<1	<1	<1	<1	<1	<1	<1	<1	<1	<1
SW-2	2/8/07	SW8260_25	<1	<10 (R)	<1	<10	<1	<1	<1	<1	0.26 (J)	<1	<1	<1	<1	<1	<1
SW-2	4/20/07	SW8260_25	<1	<10	<1	<10	<1	<1	<1	<1	<1	<1	<1	<1	<1	<1	<1
SW-3	11/21/06	SW8260_25	<1	<10	<1	<10	<1	<1	<1	<1	<1	<1	<1	<1	<1	<1	<1
SW-3	2/8/07	SW8260_25	<1	<10 (R)	<1	<10	<1	<1	<1	<1	0.25 (J)	<1	<1	<1	<1	<1	<1
SW-3	4/20/07	SW8260_25	<1	<10	<1	<10	<1	<1	<1	<1	<1	<1	<1	<1	<1	<1	<1
<b>CDPHE Standards (March 2005):</b>			<b>5</b>	<b>--</b>	<b>--</b>	<b>--</b>	<b>100</b>	<b>--</b>	<b>0.18</b>	<b>5</b>	<b>1000</b>	<b>200</b>	<b>5</b>		<b>5</b>	<b>--</b>	<b>--</b>
<b>Federal Drinking Water Standards (MCLs):</b>															<b>5</b>		

Notes: CDPHE - Colorado Department of Public Health and Environment  
ug/L - micrograms per Liter (Dup) - Duplicate sample MCL - Maximum Contaminant Levels  
< - below the Reporting Limit (J) - Result is an estimated value. (R) - Result is a rejected value.

**TABLE 1**  
**LABORATORY ANALYTICAL RESULTS - VOLATILE ORGANIC COMPOUNDS**  
**LOWRY OU2 LANDFILL SITE**  
**FORMER LOWRY AIR FORCE BASE**  
**DENVER, COLORADO**

Sampling Location / Well ID	Sample Date	Analytical Method	Volatile Organic Compounds (ug/L)				
			Vinyl acetate	Vinyl chloride	Total xylenes	Xylenes, m and p	Xylenes, o
<b>Upgradient</b>							
BG-5	11/13/06	SW8260_25	<1	<1	<2	<1	<1
BG-5	2/7/07	SW8260_25	<2	<1	<2	<1	<1
BG-5	4/19/07	SW8260_25	<2	<1	<2	<1	<1
BG-6	11/13/06	SW8260_25	<1	<1	<2	<1	<1
BG-6	2/7/07	SW8260_25	<2	<1	<2	<1	<1
BG-6 (Dup)	2/7/07	SW8260_25	<2	<1	<2	<1	<1
BG-6	4/20/07	SW8260_25	<2	<1	<2	<1	<1
LFPOC09	11/13/06	SW8260_25	<1	<1	<2	<1	<1
LFPOC09	2/8/07	SW8260_25	<2	<1	<2	<1	<1
LFPOC09	4/19/07	SW8260_25	<2	<1	<2	<1	<1
<b>Downgradient</b>							
LFPOC07	11/13/06	SW8260_25	<1	<1	<2	<1	<1
LFPOC07	2/8/07	SW8260_25	<2	<1	<2	<1	<1
LFPOC07	4/19/07	SW8260_25	<2	<1	<2	<1	<1
LFPOC08	11/13/06	SW8260_25	<1	<1	<2	<1	<1
LFPOC08	2/7/07	SW8260_25	<2	<1	<2	<1	<1
LFPOC08	4/19/07	SW8260_25	<2	<1	<2	<1	<1
LFPOC10	11/13/06	SW8260_25	<1	<1	<2	<1	<1
LFPOC10	2/7/07	SW8260_25	<2	<1	<2	<1	<1
LFPOC10	4/19/07	SW8260_25	<2	<1	<2	<1	<1
LFPOC11	11/13/06	SW8260_25	<1	<1	<2	<1	<1
LFPOC11	2/7/07	SW8260_25	<2	<1	<2	<1	<1
LFPOC11	4/19/07	SW8260_25	<2	<1	<2	<1	<1
LFPOC12	11/13/06	SW8260_25	<1	<1	<2	<1	<1
LFPOC12	2/8/07	SW8260_25	<2	<1	<2	<1	<1
LFPOC12	4/19/07	SW8260_25	<2	<1	<2	<1	<1
LFPOC12 (Dup)	4/19/07	SW8260_25	<2	<1	<2	<1	<1
LFPOC13	11/13/06	SW8260_25	<1	<1	<2	<1	<1
LFPOC13	2/7/07	SW8260_25	<2	<1	<2	<1	<1
LFPOC13	4/20/07	SW8260_25	<2	<1	<2	<1	<1
LZ-13	11/13/06	SW8260_25	<1	<1	<2	<1	<1
LZ-13	2/8/07	SW8260_25	<2	<1	<2	<1	<1
LZ-13	4/19/07	SW8260_25	<2	<1	<2	<1	<1
<b>Surface Water</b>							
SW-1	11/21/06	SW8260_25	<1	<1	<2	<1	<1
SW-1	2/8/07	SW8260_25	<2	<1	<2	<1	<1

Notes: CDPHE - Colorado Department of Public Health and Environment  
(J) - Result is an estimated value. (R) - Result is a rejected value.  
(Dup) - Duplicate sample < - below the Reporting Limit  
MCLs - Maximum Contaminant Levels  
ug/L - micrograms per Liter

**TABLE 1**  
**LABORATORY ANALYTICAL RESULTS - VOLATILE ORGANIC COMPOUNDS**  
**LOWRY OU2 LANDFILL SITE**  
**FORMER LOWRY AIR FORCE BASE**  
**DENVER, COLORADO**

Sampling Location / Well ID	Sample Date	Analytical Method	Volatile Organic Compounds (ug/L)				
			Vinyl acetate	Vinyl chloride	Total xylenes	Xylenes, m and p	Xylenes, o
SW-1 (Dup)	2/8/07	SW8260_25	<2	<1	<2	<1	<1
SW-1	4/20/07	SW8260_25	<2	<1	<2	<1	<1
SW-1 (Dup)	4/20/07	SW8260_25	<2	<1	<2	<1	<1
SW-2	11/21/06	SW8260_25	<1	<1	<2	<1	<1
SW-2 (Dup)	11/21/06	SW8260_25	<1	<1	<2	<1	<1
SW-2	2/8/07	SW8260_25	<2	<1	<2	<1	<1
SW-2	4/20/07	SW8260_25	<2	<1	<2	<1	<1
SW-3	11/21/06	SW8260_25	<1	<1	<2	<1	<1
SW-3	2/8/07	SW8260_25	<2	<1	<2	<1	<1
SW-3	4/20/07	SW8260_25	<2	<1	<2	<1	<1
<b>CDPHE Standards (March 2005):</b>			--	<b>2</b>	<b>10000</b>	--	--
<b>Federal Drinking Water Standards (MCLs):</b>							

Notes: CDPHE - Colorado Department of Public Health and Environment  
(J) - Result is an estimated value. (R) - Result is a rejected value.  
(Dup) - Duplicate sample < - below the Reporting Limit

MCLs - Maximum Contaminant Levels  
ug/L - micrograms per Liter

**TABLE 2  
LABORATORY ANALYTICAL RESULTS - TOTAL METALS  
LOWRY OU2 LANDFILL SITE  
FORMER LOWRY AIR FORCE BASE  
DENVER, COLORADO**

Sampling Location / Well ID	Sample Date	Analytical Method	Total Metals (mg/L)																		
			Antimony	Arsenic	Barium	Beryllium	Cadmium	Calcium	Chromium	Cobalt	Copper	Lead	Magnesium	Nickel	Potassium	Selenium	Silver	Sodium	Thallium	Vanadium	Zinc
<b>Upgradient</b>																					
BG-5	11/13/06	SW6010	<0.02	<0.01	0.21	<0.005	<0.005	170	<0.01	0.012	<0.01	<0.003	44	0.027	8.1	<0.005	<0.01	81	<0.01	0.01	<0.02
BG-5	2/7/07	SW6010	<0.02	<0.01	0.13	<0.005	<0.005	150	<0.01	<0.01	<0.01	<0.003	36	<0.02	7.2	<0.005	<0.01	130	<0.01	<0.01	<0.02
BG-5	4/19/07	SW6010	<0.02	<0.01	0.23	<0.005	<0.005	160	<0.01	0.016	0.012	<0.003	36	0.034	5.2	<0.005	<0.01	79	<0.01	0.012	<0.02
BG-6	11/13/06	SW6010	<0.02	<0.01	<0.1	<0.005	<0.005	58	<0.01	<0.01	<0.01	<0.003	9.9	<0.02	1.4	<0.005	<0.01	66	<0.01	<0.01	<0.02
BG-6	2/7/07	SW6010	<0.02	<0.01	<0.1	<0.005	<0.005	58	<0.01	<0.01	<0.01	<0.003	10	<0.02	1.5	<0.005	<0.01	67	<0.01	<0.01	<0.02
BG-6 (Dup)	2/7/07	SW6010	<0.02	<0.01	<0.1	<0.005	<0.005	58	<0.01	<0.01	<0.01	<0.003	10	<0.02	1.5	<0.005	<0.01	66	<0.01	<0.01	<0.02
BG-6	4/20/07	SW6010	<0.02	<0.01	<0.1	<0.005	<0.005	56	<0.01	<0.01	<0.01	<0.003	9.7	<0.02	1.3	<0.005	<0.01	67	<0.01	<0.01	<0.02
LFPOC09	11/13/06	SW6010	<0.02	<0.01	<0.1	<0.005	<0.005	94	<0.01	<0.01	<0.01	<0.003	14	<0.02	1.6	<0.005	<0.01	99	<0.01	<0.01	<0.02
LFPOC09	2/8/07	SW6010	<0.02	<0.01	<0.1	<0.005	<0.005	93	<0.01	<0.01	<0.01	<0.003	14	<0.02	1.5	<0.005	<0.01	100	<0.01	<0.01	0.044
LFPOC09	4/19/07	SW6010	<0.02	<0.01	<0.1	<0.005	<0.005	88	<0.01	<0.01	<0.01	<0.003	13	<0.02	1.3	<0.005	<0.01	99	<0.01	<0.01	<0.02
<b>Downgradient</b>																					
LFPOC07	11/13/06	SW6010	<0.02	<0.01	<0.1	<0.005	<0.005	65	<0.01	<0.01	<0.01	<0.003	12	<0.02	1.9	<0.005	<0.01	110	<0.01	<0.01	<0.02
LFPOC07	2/8/07	SW6010	<0.02	<0.01	<0.1	<0.005	<0.005	67	<0.01	<0.01	<0.01	<0.003	12	<0.02	1.5	<0.005	<0.01	110	<0.01	<0.01	<0.02
LFPOC07	4/19/07	SW6010	<0.02	<0.01	<0.1	<0.005	<0.005	64	<0.01	<0.01	<0.01	<0.003	11	<0.02	1.4	<0.005	<0.01	110	<0.01	<0.01	<0.02
LFPOC08	11/13/06	SW6010	<0.02	<0.01	<0.1	<0.005	<0.005	120	<0.01	<0.01	<0.01	<0.003	18	<0.02	1.6	<0.005	<0.01	110	<0.01	<0.01	<0.02
LFPOC08	2/7/07	SW6010	<0.02	<0.01	<0.1	<0.005	<0.005	120	<0.01	<0.01	<0.01	<0.003	18	<0.02	1.4	<0.005	<0.01	110	<0.01	<0.01	<0.02
LFPOC08	4/19/07	SW6010	<0.02	<0.01	<0.1	<0.005	<0.005	120	<0.01	<0.01	<0.01	<0.003	18	<0.02	1.3	<0.005	<0.01	110	<0.01	<0.01	<0.02
LFPOC10	11/13/06	SW6010	<0.02	<0.01	<0.1	<0.005	<0.005	98	<0.01	<0.01	<0.01	<0.003	15	<0.02	1.5	<0.005	<0.01	99	<0.01	<0.01	<0.02
LFPOC10	2/7/07	SW6010	<0.02	<0.01	<0.1	<0.005	<0.005	100	<0.01	<0.01	<0.01	<0.003	16	<0.02	1.3	<0.005	<0.01	100	<0.01	<0.01	<0.02
LFPOC10	4/19/07	SW6010	<0.02	<0.01	<0.1	<0.005	<0.005	100	<0.01	<0.01	<0.01	<0.003	16	<0.02	1.3	<0.005	<0.01	99	<0.01	<0.01	<0.02
LFPOC11	11/13/06	SW6010	<0.02	<0.01	<0.1	<0.005	<0.005	120	<0.01	<0.01	<0.01	<0.003	25	<0.02	3.9	<0.005	<0.01	140	<0.01	<0.01	<0.02
LFPOC11	2/7/07	SW6010	<0.02	<0.01	<0.1	<0.005	<0.005	120	<0.01	<0.01	<0.01	<0.003	25	<0.02	3.4	<0.005	<0.01	140	<0.01	<0.01	<0.02
LFPOC11	4/19/07	SW6010	<0.02	<0.01	<0.1	<0.005	<0.005	120	<0.01	<0.01	<0.01	<0.003	26	<0.02	3.4	<0.005	<0.01	140	<0.01	<0.01	<0.02
LFPOC12	11/13/06	SW6010	<0.02	<0.01	<0.1	<0.005	<0.005	100	<0.01	<0.01	<0.01	<0.003	27	<0.02	4.0	<0.005	<0.01	170	<0.01	<0.01	<0.02
LFPOC12	2/8/07	SW6010	<0.02	<0.01	<0.1	<0.005	<0.005	100	<0.01	<0.01	<0.01	<0.003	27	<0.02	3.6	<0.005	<0.01	160	<0.01	<0.01	0.027
LFPOC12	4/19/07	SW6010	<0.02	<0.01	<0.1	<0.005	<0.005	98	<0.01	<0.01	<0.01	<0.003	26	<0.02	3.4	<0.005	<0.01	160	<0.01	<0.01	<0.02
LFPOC12 (Dup)	4/19/07	SW6010	<0.02	<0.01	<0.1	<0.005	<0.005	99	<0.01	<0.01	<0.01	<0.003	26	<0.02	3.4	<0.005	<0.01	160	<0.01	<0.01	<0.02
LFPOC13	11/13/06	SW6010	<0.02	<0.01	0.15	<0.005	<0.005	120	0.01	<0.01	<0.01	0.0085	22	<0.02	5.2	<0.005	<0.01	100	<0.01	0.027	0.033
LFPOC13	2/7/07	SW6010	<0.02	<0.01	<0.1	<0.005	<0.005	100	<0.01	<0.01	<0.01	<0.003	18	<0.02	2.5	<0.005	<0.01	110	<0.01	<0.01	<0.02
LFPOC13	4/20/07	SW6010	<0.02	<0.01	<0.1	<0.005	<0.005	110	<0.01	<0.01	<0.01	<0.003	19	<0.02	2.3	<0.005	<0.01	95	<0.01	<0.01	<0.02
LZ-13	11/13/06	SW6010	<0.02	<0.01	<0.1	<0.005	<0.005	66	<0.01	<0.01	<0.01	<0.003	21	<0.02	2.2	<0.005	<0.01	100	<0.01	<0.01	<0.02
LZ-13	2/8/07	SW6010	<0.02	<0.01	<0.1	<0.005	<0.005	67	<0.01	<0.01	<0.01	<0.003	22	<0.02	1.8	<0.005	<0.01	100	<0.01	<0.01	0.063
LZ-13	4/19/07	SW6010	<0.02	<0.01	<0.1	<0.005	<0.005	93	<0.01	<0.01	<0.01	<0.003	32	<0.02	2.3	<0.005	<0.01	120	<0.01	<0.01	<0.02
<b>Surface Water</b>																					
SW-1	11/21/06	SW6010	<0.02	<0.01	0.14	<0.005	<0.005	110	<0.01	<0.01	<0.01	<0.003	25	<0.02	3.6	<0.005	<0.01	61	<0.01	<0.01	<0.02
SW-1	2/8/07	SW6010	<0.02	<0.01	0.11	<0.005	<0.005	75	<0.01	<0.01	<0.01	0.0045	19	<0.02	6.6	<0.005	<0.01	130	<0.01	<0.01	0.083
SW-1 (Dup)	2/8/07	SW6010	<0.02	<0.01	0.1	<0.005	<0.005	73	<0.01	<0.01	0.01	0.0064	19	<0.02	6.8	<0.005	<0.01	130	<0.01	<0.01	0.08

Notes: CDPHE - Colorado Department of Public Health and Environment      MCLs - Maximum Contaminant Levels  
mg/L - milligrams per Liter      (Dup) - Duplicate sample      < - below the Reporting Limit      (J) - Result is an estimated value.      (R) - Result is a rejected value.

**TABLE 2**  
**LABORATORY ANALYTICAL RESULTS - TOTAL METALS**  
**LOWRY OU2 LANDFILL SITE**  
**FORMER LOWRY AIR FORCE BASE**  
**DENVER, COLORADO**

Sampling Location / Well ID	Sample Date	Analytical Method	Total Metals (mg/L)																			
			Antimony	Arsenic	Barium	Beryllium	Cadmium	Calcium	Chromium	Cobalt	Copper	Lead	Magnesium	Nickel	Potassium	Selenium	Silver	Sodium	Thallium	Vanadium	Zinc	
SW-1	4/20/07	SW6010	<0.02	<0.01	0.12	<0.005	<0.005	98	<0.01	<0.01	<0.01	<0.003	30	<0.02	4.0	<0.005	<0.01	71	<0.01	<0.01	<0.02	
SW-1 (Dup)	4/20/07	SW6010	<0.02	<0.01	0.12	<0.005	<0.005	99	<0.01	<0.01	<0.01	<0.003	30	<0.02	4.0	<0.005	<0.01	71	<0.01	<0.01	<0.02	
SW-2	11/21/06	SW6010	<0.02	<0.01	0.11	<0.005	<0.005	130	<0.01	<0.01	<0.01	<0.003	30	<0.02	5.8	<0.005	<0.01	99	<0.01	<0.01	<0.02	
SW-2 (Dup)	11/21/06	SW6010	<0.02	<0.01	0.11	<0.005	<0.005	130	<0.01	<0.01	<0.01	<0.003	30	<0.02	5.8	<0.005	<0.01	98	<0.01	<0.01	<0.02	
SW-2	2/8/07	SW6010	<0.02	<0.01	<0.1	<0.005	<0.005	61	<0.01	<0.01	<0.01	0.0043	22	<0.02	8.8	<0.005	<0.01	190	<0.01	<0.01	0.043	
SW-2	4/20/07	SW6010	<0.02	<0.01	<0.1	<0.005	<0.005	100	<0.01	<0.01	<0.01	<0.003	30	<0.02	5.0	<0.005	<0.01	95	<0.01	<0.01	<0.02	
SW-3	11/21/06	SW6010	<0.02	<0.01	0.11	<0.005	<0.005	120	<0.01	<0.01	<0.01	<0.003	30	<0.02	5.7	<0.005	<0.01	99	<0.01	<0.01	<0.02	
SW-3	2/8/07	SW6010	<0.02	<0.01	<0.1	<0.005	<0.005	62	<0.01	<0.01	<0.01	<0.003	22	<0.02	8.6	<0.005	<0.01	180	<0.01	<0.01	0.04	
SW-3	4/20/07	SW6010	<0.02	<0.01	<0.1	<0.005	<0.005	110	<0.01	<0.01	<0.01	<0.003	30	<0.02	5.0	<0.005	<0.01	95	<0.01	<0.01	<0.02	
<b>CDPHE Standards (March 2005):</b>																						
<b>Federal Drinking Water Standards (MCLs): 0.006</b>			<b>0.010</b>	<b>2</b>	<b>0.004</b>	<b>0.005</b>	--	<b>0.1</b>	--	<b>1.3</b>	<b>0.015</b>	--	--	--	<b>0.05</b>		--	<b>0.002</b>	--	<b>5</b>		
<b>Federal Secondary Drinking Water Standards:</b>																	<b>0.10</b>					

Notes: CDPHE - Colorado Department of Public Health and Environment      MCLs - Maximum Contaminant Levels  
mg/L - milligrams per Liter      (Dup) - Duplicate sample      < - below the Reporting Limit      (J) - Result is an estimated value.      (R) - Result is a rejected value.

**TABLE 3**  
**LABORATORY ANALYTICAL RESULTS - ANIONS, FIELD PARAMETERS, AND TOTAL ORGANIC CARBON**  
**LOWRY OU2 LANDFILL SITE**  
**FORMER LOWRY AIR FORCE BASE**  
**DENVER, COLORADO**

Sampling Location / Well ID	Sample Date	ANIONS						FIELD PARAMETERS			Total Organic Carbon (mg/L)
		Carbonate as CaCO3 (mg/L)	Bicarbonate as CaCO3 (mg/L)	Chloride (mg/L)	Sulfate (mg/L)	Nitrite as N (mg/L)	Nitrate as N (mg/L)	pH, Field (su)	Conductivity, Field (u-S)	Temperature, Field (Deg C)	
<b>Upgradient</b>											
BG-5	11/13/06	<20	390	180	120	<0.2	3.9	7.07	1270	18.30	2.9
BG-5	2/7/07	<20	400	220	120	0.52	3.0	7.05	1396	14.66	3.1
BG-5	4/19/07	<20	370	170	100	<0.1 (J)	2.2	7.52	1206	14.77	2.3
BG-6	11/13/06	<20	230	180	53	<0.1	<0.2	7.55	640	16.76	1.1
BG-6	2/7/07	<20	230	45	52	<0.1	<0.2	7.46	624	13.56	1.2
BG-6 (Dup)	2/7/07	<20	230	44	51	0.1	<0.2				1.3
BG-6	4/20/07	<50	240	49	50	<0.1 (J)	<0.2	7.81	660	13.87	<1
LFPOC09	11/13/06	<20	310	60	97	<0.1	7.0	7.33	939	17.78	1.2
LFPOC09	2/8/07	<20	300	63	99	<0.1	6.9	7.27	921	16.35	1.3
LFPOC09	4/19/07	<50	300	62	94	<0.1 (J)	6.8	7.83	1980	15.92	42
<b>Downgradient</b>											
LFPOC07	11/13/06	<20	320	57	76	<0.1	<0.2	7.56	865	11.43	1.5
LFPOC07	2/8/07	<20	320	60	74	<0.1	<0.2	7.59	849	6.59	1.4
LFPOC07	4/19/07	<50	320	62	70	<0.1 (J)	<0.2 (J)	8.02	916	9.47	1.1
LFPOC08	11/13/06	<20	390	98	98	<0.1	0.97	7.11	1103	12.53	1.8
LFPOC08	2/7/07	<20	400	100	100	0.26	0.67	6.8	1111	10.75	1.8
LFPOC08	4/19/07	<50	390	100	96	<0.1 (J)	0.6 (J)	7.99	1179	11.17	1.6
LFPOC10	11/13/06	<10	340	85	76	<0.1	0.67	7.08	963	13.51	1.6
LFPOC10	2/7/07	<20	350	87	73	0.23	<0.2	6.97	968	13.28	1.5
LFPOC10	4/19/07	<50	360	92	74	<0.1 (J)	<0.2	7.85	1056	13.78	1.4
LFPOC11	11/13/06	<20	490	110	84	<0.2	<0.4	6.9	1252	13.73	1.8
LFPOC11	2/7/07	<20	490	110	77	0.28	<0.2	7.55	1248	13.44	1.7
LFPOC11	4/19/07	<50	490	120	80	<0.1 (J)	<0.2 (J)	7.75	1356	13.17	1.5
LFPOC12	11/13/06	<20	430	89	180	<0.2	<0.4	6.97	1289	13.85	1.8
LFPOC12	2/8/07	<50	430	92	180	<0.2	<0.4	7.1	1260	12.73	1.9
LFPOC12	4/19/07	<50	420	95	170	<0.1 (J)	<0.2	7.12	1346	12.43	1.7
LFPOC12 (Dup)	4/19/07	<50	420	96	170	<0.1 (J)	<0.2 (J)				1.5
LFPOC13	11/13/06	<20	330	98	120	<0.1	1.4	7.28	1051	15.41	1.6
LFPOC13	2/7/07	<10	330	88	120	0.24	1.7	6.27	1021	13.51	1.3
LFPOC13	4/20/07	<50	320	78	130	<0.1 (J)	3.0	7.84	1056	12.49	1.3
LZ-13	11/13/06	<20	330	63	75	<0.1	1.3	7.29	885	10.44	1.6
LZ-13	2/8/07	<50	330	67	77	<0.1	0.73	7.42	875	4.99	1.4
LZ-13	4/19/07	<50	350	98	190	<0.1 (J)	0.95 (J)	8.67	1250	9.00	2.1

Notes: CDPHE - Colorado Department of Public Health and Environment      su - standard units      Deg C - Degrees Centigrade      u-S - microSiemens/cm  
mg/L - milligrams per Liter      (Dup) - Duplicate sample      < - below the Reporting Limit      (J) - Result is an estimated value.      (R) - Result is a rejected value.

**TABLE 3**  
**LABORATORY ANALYTICAL RESULTS - ANIONS, FIELD PARAMETERS, AND TOTAL ORGANIC CARBON**  
**LOWRY OU2 LANDFILL SITE**  
**FORMER LOWRY AIR FORCE BASE**  
**DENVER, COLORADO**

Sampling Location / Well ID	Sample Date	ANIONS						FIELD PARAMETERS			Total Organic Carbon (mg/L)
		Carbonate as CaCO3 (mg/L)	Bicarbonate as CaCO3 (mg/L)	Chloride (mg/L)	Sulfate (mg/L)	Nitrite as N (mg/L)	Nitrate as N (mg/L)	pH, Field (su)	Conductivity, Field (u-S)	Temperature, Field (Deg C)	
<b>Surface Water</b>											
SW-1	11/21/06	<20	290	41	52	<0.1	7.6	8.36	794	14.46	2.3
SW-1	2/8/07	<20	170	<b>260</b>	60	<0.1	4.1	7.75	1113	7.40	5.7
SW-1 (Dup)	2/8/07	<20	160	<b>270</b>	56	<0.1	3.9				5.4
SW-1	4/20/07	<20	260	92	100	<0.1 (J)	5.3	8.11	997	11.51	2.5
SW-1 (Dup)	4/20/07	<20	260	94	110	<0.1 (J)	5.4				2.6
SW-2	11/21/06	<20	270	<b>250</b>	<b>490</b>	<0.2	3.7	8.4	946	10.91	5.2
SW-2 (Dup)	11/21/06	<20	270	<b>250</b>	<b>490</b>	<0.2	3.7				5.2
SW-2	2/8/07	<20	120	<b>370</b>	100	<0.2	1.7	7.86	1430	4.39	6.3
SW-2	4/20/07	<20	210	130	190	<0.1 (J)	3.0	8.31	1155	12.27	6.4
SW-3	11/21/06	<10	260	<b>250</b>	<b>490</b>	<0.2	3.6	8.46	932	10.55	5.3
SW-3	2/8/07	<20	120	<b>360</b>	99	<0.2	1.7	7.93	1423	3.98	6.5
SW-3	4/20/07	<20	230	130	180	<0.1 (J)	3.0	8.23	1158	11.28	6
<b>CDPHE Standards (March 2005):</b>		--	--			<b>1.0</b>	<b>10</b>	--	--	--	--
<b>CDPHE Secondary Drinking Water Standards (March 2005):</b>				<b>250</b>	<b>250</b>						

Notes: CDPHE - Colorado Department of Public Health and Environment      su - standard units      Deg C - Degrees Centigrade      u-S - microSiemens/cm  
mg/L - milligrams per Liter      (Dup) - Duplicate sample      < - below the Reporting Limit      (J) - Result is an estimated value.      (R) - Result is a rejected value.

**TABLE 4**  
**LABORATORY ANALYTICAL RESULTS**  
**GROSS ALPHA AND GROSS BETA**  
**LOWRY OU2 LANDFILL SITE**  
**FORMER LOWRY AIR FORCE BASE**  
**DENVER, COLORADO**

Sampling Location / Well ID	Sample Date	Analytical Method	Gross Alpha (pCi/L)	Gross Beta (pCi/L)
<b>Upgradient</b>				
BG-5	11/13/06	724R9	<b>40.3 +/- 6.8</b>	26.2 +/- 4.6
BG-5	2/7/07	724R9	<b>32.2 +/- 5.7</b>	18.1 +/- 3.6
BG-5	4/19/07	724R9	<b>54.7 +/- 9.4</b>	39.3 +/- 6.8
BG-6	11/13/06	724R9	11.8 +/- 2.9	5.6 +/- 2
BG-6	2/7/07	724R9	11.2 +/- 2.8	4.4 +/- 1.7
BG-6 (Dup)	2/7/07	724R9	11.2 +/- 2.8	5.5 +/- 1.9
BG-6	4/20/07	724R9	9.6 +/- 1.9	6.3 +/- 1.4
LFPOC09	11/13/06	724R9	<b>35.3 +/- 6.5</b>	12 +/- 2.8
LFPOC09	2/8/07	724R9	<b>37.1 +/- 6.7</b>	14.9 +/- 3.1
LFPOC09	4/19/07	724R9	<b>41.7 +/- 7.3</b>	18.4 +/- 3.5
<b>Downgradient</b>				
LFPOC07	11/13/06	724R9	<b>23 +/- 4.3</b>	9.2 +/- 2.1
LFPOC07	2/8/07	724R9	<b>21 +/- 4.1</b>	7.5 +/- 2.1
LFPOC07	4/19/07	724R9	<b>23.7 +/- 4.4</b>	10.8 +/- 2.3
LFPOC08	11/13/06	724R9	<b>53.6 +/- 9.3</b>	21 +/- 4.1
LFPOC08	2/7/07	724R9	<b>49.5 +/- 8.6</b>	15.3 +/- 3.2
LFPOC08	4/19/07	724R9	<b>68 +/- 11</b>	26.2 +/- 4.8
LFPOC10	11/13/06	724R9	<b>47.3 +/- 8.3</b>	14.3 +/- 3.1
LFPOC10	2/7/07	724R9	<b>52 +/- 9</b>	22.9 +/- 4.3
LFPOC10	4/19/07	724R9	<b>60.2 +/- 10</b>	28.3 +/- 5
LFPOC11	11/13/06	724R9	<b>42.1 +/- 7.2</b>	25 +/- 4.4
LFPOC11	2/7/07	724R9	<b>51.5 +/- 8.8</b>	19.2 +/- 3.6
LFPOC11	4/19/07	724R9	<b>44.3 +/- 7.9</b>	21.6 +/- 4.1
LFPOC12	11/13/06	724R9	13.4 +/- 2.7	8.4 +/- 2.1
LFPOC12	2/8/07	724R9	9.3 +/- 2.1	7.3 +/- 2.0
LFPOC12	4/19/07	724R9	11.8 +/- 2.7	6.4 +/- 2
LFPOC12 (Dup)	4/19/07	724R9	11.4 +/- 2.5	6.7 +/- 2
LFPOC13	11/13/06	724R9	<b>66 +/- 11</b>	40.5 +/- 6.9
LFPOC13	2/7/07	724R9	<b>77 +/- 13</b>	22.5 +/- 4.2
LFPOC13	4/20/07	724R9	<b>51.9 +/- 9</b>	30.9 +/- 5.4
LZ-13	11/13/06	724R9	<b>17.6 +/- 3.4</b>	9 +/- 2.1
LZ-13	2/8/07	724R9	<b>20.2 +/- 3.9</b>	7.6 +/- 2
LZ-13	4/19/07	724R9	<b>35.2 +/- 6.3</b>	13.5 +/- 2.8

Notes: Results are displayed as the Result +/- 2 s TPU (Total Propagated Uncertainty). Shown in bold if the result exceeds the standard.

CDPHE - Colorado Department of Public Health and Environment  
pCi/L - picoCuries per Liter (Dup) - Duplicate sample  
is an estimated value. (R) - Result is a rejected value.

(J) - Result

**TABLE 4  
LABORATORY ANALYTICAL RESULTS  
GROSS ALPHA AND GROSS BETA  
LOWRY OU2 LANDFILL SITE  
FORMER LOWRY AIR FORCE BASE  
DENVER, COLORADO**

Sampling Location / Well ID	Sample Date	Analytical Method	Gross Alpha (pCi/L)	Gross Beta (pCi/L)
<b>Surface Water</b>				
SW-1	11/21/06	724R9	7.4 +/- 2.1	4.3 +/- 2
SW-1	2/8/07	724R9	5.2 +/- 1.5	8.5 +/- 2.2
SW-1 (Dup)	2/8/07	724R9	4 +/- 1.3	5.9 +/- 2.3
SW-1	4/20/07	724R9	8.6 +/- 1.9	7 +/- 1.9
SW-1 (Dup)	4/20/07	724R9	8.8 +/- 2	6.1 +/- 1.8
SW-2	11/21/06	724R9	<b>15.3 +/- 3</b>	6.2 +/- 1.9
SW-2 (Dup)	11/21/06	724R9	11.1 +/- 2.4	6.7 +/- 1.9
SW-2	2/8/07	724R9	6.9 +/- 1.8 (J)	9.8 +/- 2.4
SW-2	4/20/07	724R9	12.6 +/- 2.7	8 +/- 2.1
SW-3	11/21/06	724R9	<b>16.4 +/- 3.2</b>	7.8 +/- 2.3
SW-3	2/8/07	724R9	6.3 +/- 1.6	10.7 +/- 2.5
SW-3	4/20/07	724R9	10.1 +/- 2.3	8.2 +/- 2
<b>CDPHE Standards (March 2005):</b>			<b>15</b>	<b>--</b>

Notes: Results are displayed as the Result +/- 2 s TPU (Total Propagated Uncertainty). Shown in bold if the result exceeds the standard.

CDPHE - Colorado Department of Public Health and Environment

pCi/L - picoCuries per Liter (Dup) - Duplicate sample

is an estimated value. (R) - Result is a rejected value.

(J) - Result

**TABLE 5**  
**SOIL VAPOR RESULTS**  
**LOWRY OU-2 LANDFILL SITE**  
**FORMER LOWRY AIR FORCE BASE**  
**DENVER, COLORADO**

<b>Vapor Point ID</b>	<b>Date</b>	<b>Field Measured CH<sub>4</sub> %</b>	<b>Analytical Results CH<sub>4</sub> ppm (%)</b>	<b>PID Readings</b>
GP-01	11/20/2006	0		0
	1/10/2007	0		0
	2/9/2007	0		0
	3/9/2007	0		0
	4/21/2007	0		0
	5/25/2007	0		0
GP-02	11/20/2006	0		0
	1/10/2007	0		0
	2/9/2007	0		0
	3/9/2007	0		0
	4/21/2007	0		0
	5/25/2007	0		0
GP-03	11/20/2006	0		0
	1/10/2007	0		0
	2/9/2007	0		0
	3/9/2007	0		0
	4/21/2007	0		0
	5/25/2007	0		0
GP-04	11/20/2006	0		0
	1/10/2007	0		0
	2/9/2007	0		0
	3/9/2007	0		0
	4/21/2007	0		0
	5/25/2007	0		0
GP-05	11/20/2006	0		0
	1/10/2007	0		0
	2/9/2007	0		0
	3/9/2007	0		0
	4/21/2007	0		0
	5/25/2007	0		0
GP-06	11/20/2006	0		0
	1/10/2007	0		0
	2/9/2007	0.05		0
	3/9/2007	0		0
	4/21/2007	0		0
	5/25/2007	0		0
GP-07	11/20/2006	0		0
	1/10/2007	0		0
	2/9/2007	0		0
	3/9/2007	0		0
	4/21/2007	0		0
	5/25/2007	0		0

**TABLE 5**  
**SOIL VAPOR RESULTS**  
**LOWRY OU-2 LANDFILL SITE**  
**FORMER LOWRY AIR FORCE BASE**  
**DENVER, COLORADO**

<b>Vapor Point ID</b>	<b>Date</b>	<b>Field Measured CH<sub>4</sub> %</b>	<b>Analytical Results CH<sub>4</sub> ppm (%)</b>	<b>PID Readings</b>
GP-08	11/20/2006	0		0
	1/10/2007	0		0
	2/9/2007	0		0
	3/9/2007	0		0
	4/21/2007	0		0
	5/25/2007	0		0
GP-09	11/20/2006	0		0
	1/10/2007	0		0
	2/9/2007	0		0
	3/9/2007	0		0
	4/21/2007	0		0
	5/25/2007	0		0
GP-10	11/20/2006	0		0
	1/10/2007	0		0
	2/9/2007	0		0
	3/9/2007	0		0
	4/21/2007	0		0
	5/25/2007	0		0
GP-11	11/20/2006	0		0
	1/10/2007	0		0
	2/9/2007	0		0
	3/9/2007	0		0
	4/21/2007	0		0
	5/25/2007	0		0
GP-12	11/20/2006	0		0
	1/10/2007	0		0
	2/9/2007	0		0
	3/9/2007	0		0
	4/21/2007	0		0
	5/25/2007	0		0
GP-13	11/20/2006	0		0
	1/10/2007	0		0
	2/9/2007	0		0
	3/9/2007	0		0
	4/21/2007	0		0
	5/25/2007	0		0
GP-14	11/20/2006	0		0
	1/10/2007	0		0
	2/9/2007	0		0
	3/9/2007	0		0
	4/21/2007	0		0
	5/25/2007	0		0

**TABLE 5**  
**SOIL VAPOR RESULTS**  
**LOWRY OU-2 LANDFILL SITE**  
**FORMER LOWRY AIR FORCE BASE**  
**DENVER, COLORADO**

<b>Vapor Point ID</b>	<b>Date</b>	<b>Field Measured CH<sub>4</sub> %</b>	<b>Analytical Results CH<sub>4</sub> ppm (%)</b>	<b>PID Readings</b>
GP-15	11/20/2006	0		0
	1/10/2007	0		0
	2/9/2007	0		0
	3/9/2007	0		0
	4/21/2007	0		0
	5/25/2007	0		0
GP-16	11/20/2006	0		0
	1/10/2007	0		0
	2/9/2007	0		0
	3/9/2007	0		0
	4/21/2007	0		0
	5/25/2007	0		0
GP-17	11/20/2006	0		0
	1/10/2007	0		0
	2/9/2007	0		0
	3/9/2007	0		0
	4/21/2007	0		0
	5/25/2007	0		0
GP-18	11/20/2006	0		0
	1/10/2007	0		0
	2/9/2007	0		0
	3/9/2007	0		0
	4/21/2007	0		0
	5/25/2007	0		0
GP-19	11/20/2006	0		0
	1/10/2007	0		0
	2/9/2007	NS		0
	3/9/2007	NS		0
	4/21/2007	NS		0
	5/25/2007	NS		0
GP-20	11/21/2006	0		0
	1/10/2007	0		0
	2/9/2007	0		0
	3/9/2007	0		0
	4/21/2007	0		0
	5/25/2007	0		0
GP-21	11/21/2006	0		0
	1/10/2007	0.05		0
	2/9/2007	0.05		0
	3/9/2007	0		0
	4/21/2007	0		0
	5/25/2007	0		0

**TABLE 5**  
**SOIL VAPOR RESULTS**  
**LOWRY OU-2 LANDFILL SITE**  
**FORMER LOWRY AIR FORCE BASE**  
**DENVER, COLORADO**

Vapor Point ID	Date	Field Measured CH <sub>4</sub> %	Analytical Results CH <sub>4</sub> ppm (%)	PID Readings
GP-22	11/21/2006	0		0
	1/10/2007	0.35		0
	2/9/2007	0.7		0
	3/9/2007	0.95		0
	4/21/2007	0.6		0
	5/25/2007	1.2 <sup>A</sup>	<b>13,000 (1.3 %)</b>	0
GP-23	11/21/2006	0		0
	1/10/2007	0		0
	2/9/2007	0		0
	3/9/2007	0		0
	4/21/2007	0		0
	5/25/2007	0		0
GP-24	11/21/2006	0.1 <sup>B</sup>	<0.0005%	0
	1/10/2007	0.05		0
	2/9/2007	0		0
	3/9/2007	0		0
	4/21/2007	0		0
	5/25/2007	0.05		0
GP-25	11/21/2006	0		0
	1/10/2007	0.1		0
	2/9/2007	0		0
	3/9/2007	0		0
	4/21/2007	0		0
	5/25/2007	0		0
GP-26	11/21/2006	0		0
	1/10/2007	0		0
	2/9/2007	0		0
	3/9/2007	0		0
	4/21/2007	0		0
	5/25/2007	0.5		0
GP-27	11/21/2006	0		0
	1/10/2007	0		0
	2/9/2007	0		0
	3/9/2007	0		0
	4/21/2007	0		0
	5/25/2007	0		0

Notes:

% - percent by volume

A - Value exceeded 1.0% CH<sub>4</sub>. Laboratory analytical results are reported in ppm and (%) and are discussed in the text and Attachment 5

B - Laboratory analytical result conducted 11/21/06, less than five parts per million by volume (ppm) or less than 0.0005% CH<sub>4</sub>

CH<sub>4</sub> - methane

**ATTACHMENT 1**  
**MONITORING WELL DEVELOPMENT / PURGE FORMS**



**ATTACHMENT 2**  
**SOIL VAPOR MONITORING FORMS**



**ATTACHMENT 3**  
**VALIDATION REPORTS**



**ATTACHMENTS 4**  
**GROUNDWATER AND SURFACE WATER ANALYTICAL RESULTS**

**ATTACHMENT 5**  
**SOIL VAPOR ANALYTICAL RESULTS**